



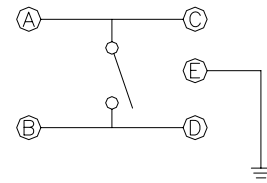
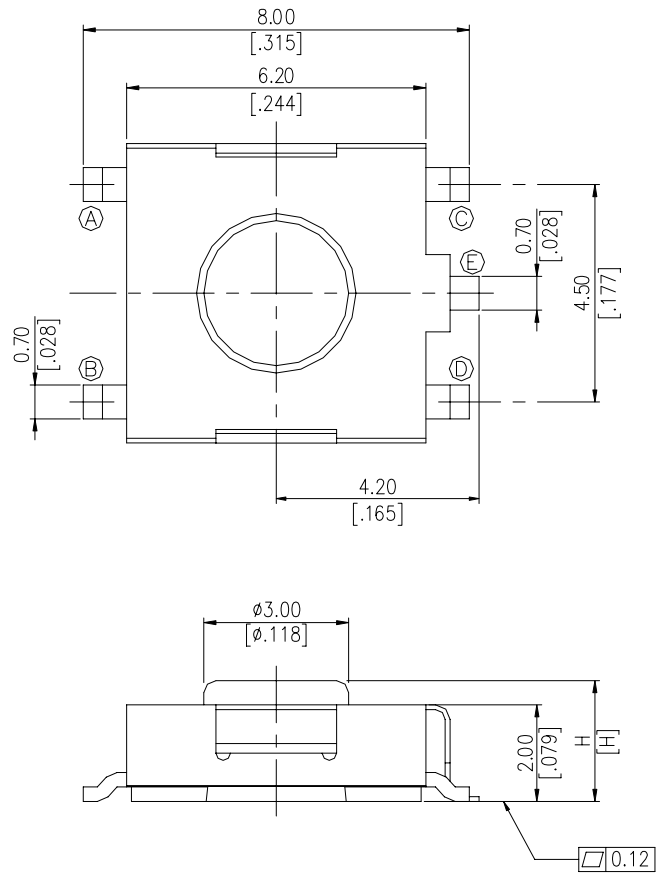
**DIPTRONICS MANUFACTURING INC.**

**DTS(G)ZM(P).DTSYH-6 SERIES**

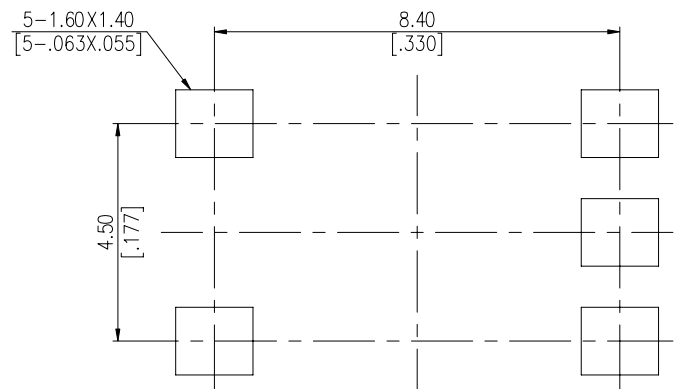


**DIMENSIONS**

**DTSGZM-6**



CIRCUIT DIAGRAM

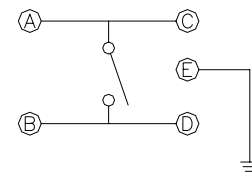
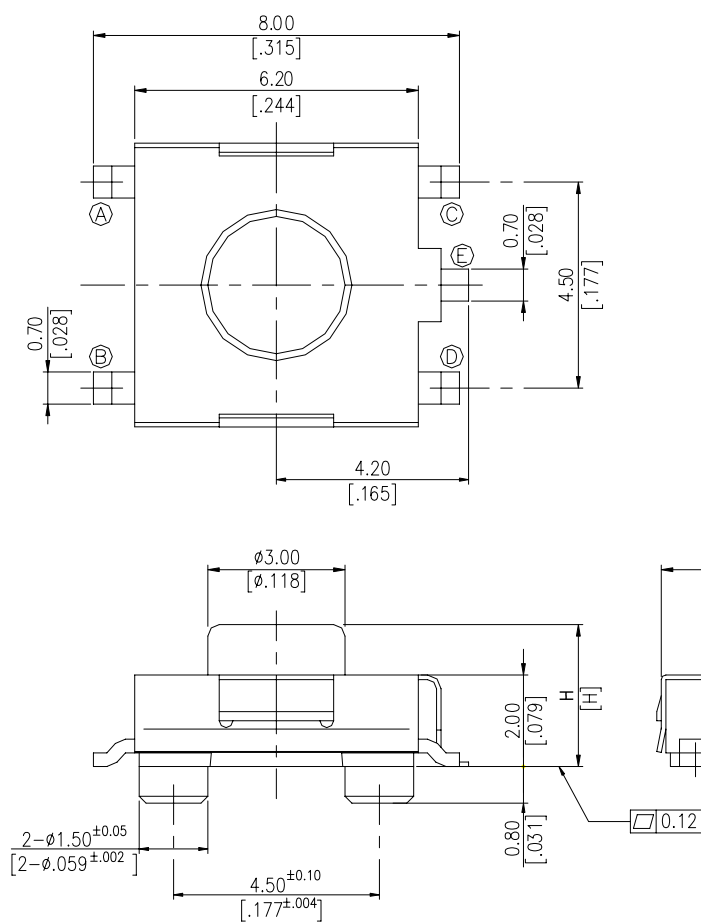


P.C.B. LAYOUT

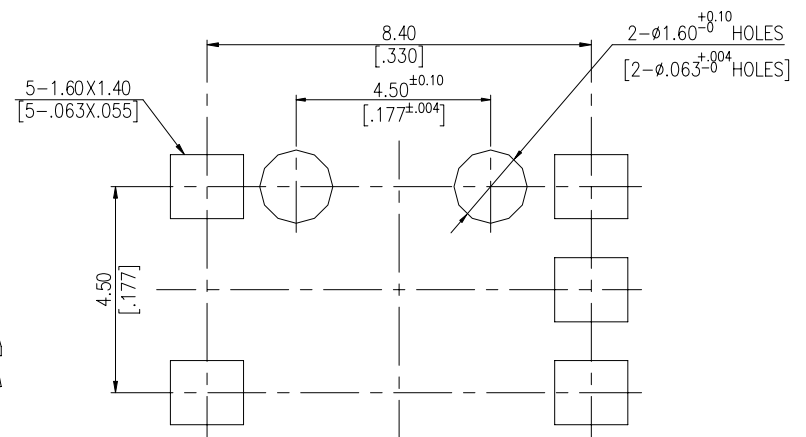
DTSGZM-62	3.1mm [.122]
DTSGZM-61	2.5mm [.098]
PART NO.	H

General Tolerance :  $\pm 0.2\text{mm}$

**DTSGZMP-6**



CIRCUIT DIAGRAM

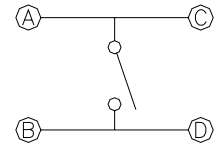
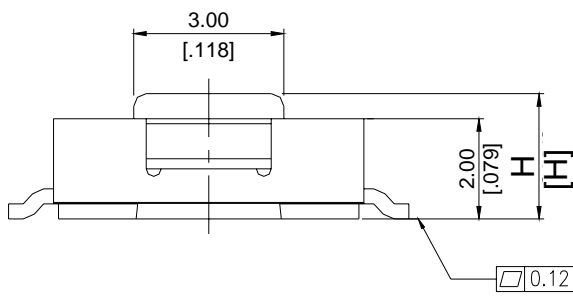
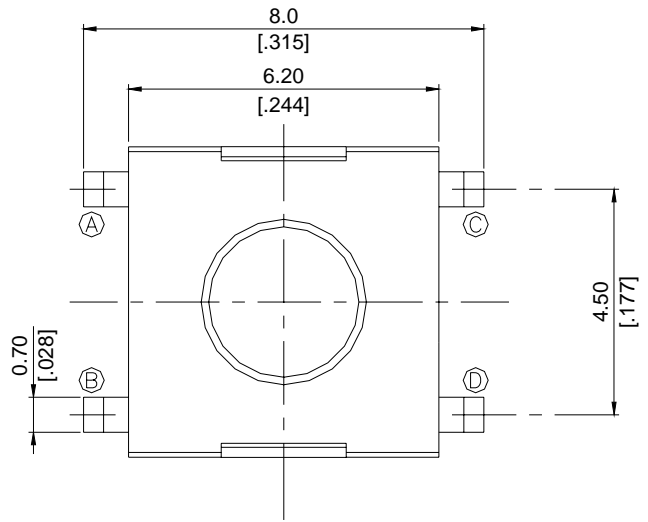


P.C.B. LAYOUT

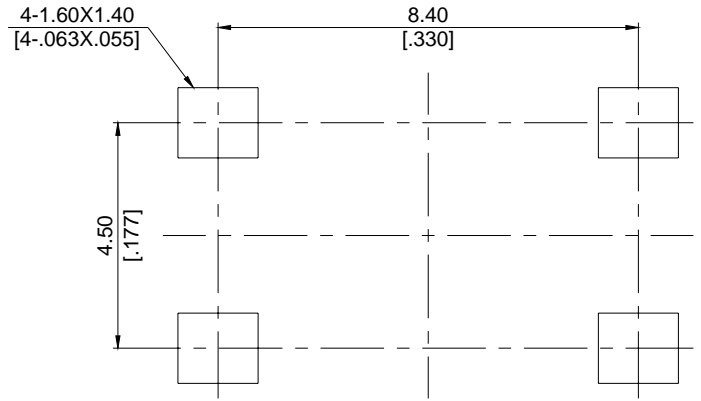
DTSGZMP-62	3.1 [.122]
DTSGZMP-61	2.5 [.098]
PART NO.	H

General Tolerance :  $\pm 0.2\text{mm}$

**DTSZM-6**



**CIRCUIT DIAGRAM**

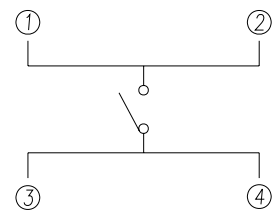
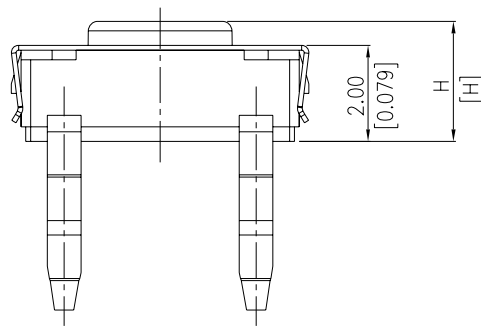
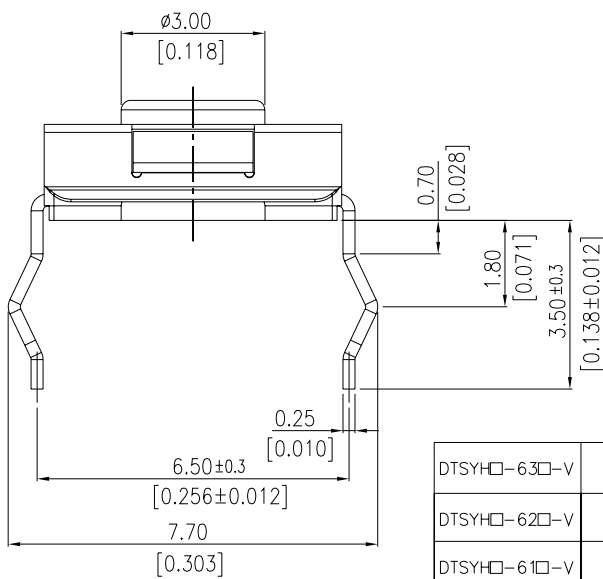
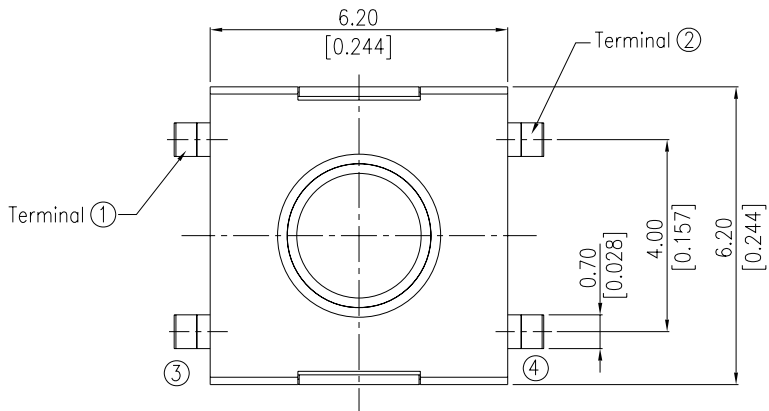


**P.C.B. LAYOUT**

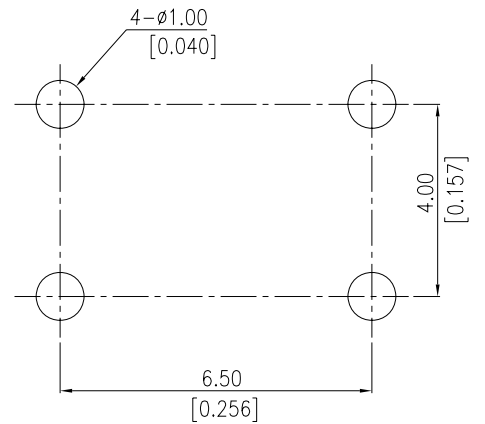
DTSZM-62	3.1mm[.122]
DTSZM-61	2.5mm[.098]
PART NO.	H

General Tolerance :  $\pm 0.2\text{mm}$

**DTSYH-6**



**CIRCUIT**



**P.C.B. LAYOUT**

DTSYH-63□-V	3.5[.138]
DTSYH-62□-V	3.1[.122]
DTSYH-61□-V	2.5[.098]
PART NO:	H

General Tolerance :  $\pm 0.2\text{mm}$

## HOW TO ORDER

DTS □ □ □ □ □ - 6 □ □ - □ - □

### Package Style:

B = Tube <Except DTS□ZMP-6>

T/R = Tape & Reel <Except DTSYH-6>

### Soldering:

V = Lead Free solderable

Q=Halogen Free

### Color of Stem for Operation Force:

K = Black, 100gf

N = Brown, 160gf

R = Red, 260gf

### Height:

1 = 2.5mm

2 = 3.1mm

### Alignment Pin

□ = Without Post

P = With Post (S.M.T Only)

L=LCP(Only for DTSGZML-6)

### Terminal Type

M = S.M.T

H = Through Hole Terminal

### Terminal Pitch

Y = Terminal Pitch 4.0mm  
(Through Hole Only)

Z = Terminal Pitch 4.5mm

### Product Series:

G = With Ground Terminal  
(DTSGZM-6 Only)

□ = Without Ground Terminal

## SPECIFICATION

### △MECHANICAL

Operation Force: 100±50gf Black(K)

160±50gf Brown(N)

260±50gf Red(R)

Stroke: 0.25+0.2/-0.1mm

Operation Temperature: -25°C to +70°C

Storage Temperature: -30°C to +80°C

### △ELECTRICAL

Electrical Life: 100,000 cycles for 260gf

200,000 cycles for 100gf,160gf

Rating : 50 mA , 12 VDC

Contact Resistance : 100mΩ max

Insulation Resistance : 100MΩ min , at 500 VDC

Dielectric Strength : 250 VAC / minute

Contact Arrangement : 1 pole 1 throw

## MATERIAL

△COVER: Stainless steel (DTSYH-6,DTSZM-6)

Nickel Silver (DTSGZM-6)

△BASE: UL 94V-0 High-temp thermoplastic

Color: Black

△CONTACT DISC: Stainless steel with silver cladding

△TERMINAL: Brass with silver plated

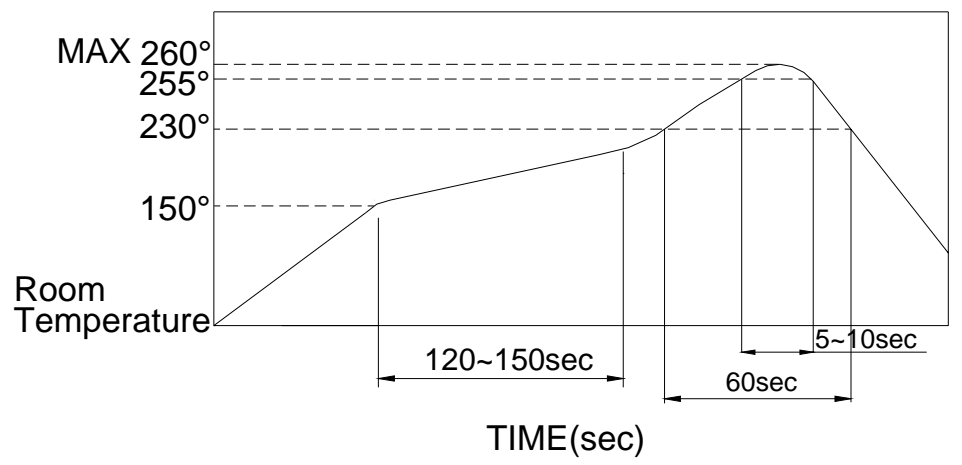
△STEM : UL94V-0 Nylon High-temp Thermoplastic

Color : Black(100gf) , Brown(160gf) , Red(260gf) ,

# SOLDERING PROCESS

△ **HAND SOLDERING** : Use a soldering iron of 30 watts, controlled at 350°C approximately max 5 seconds while applying.

△ **Reflow Temperature Profile:**

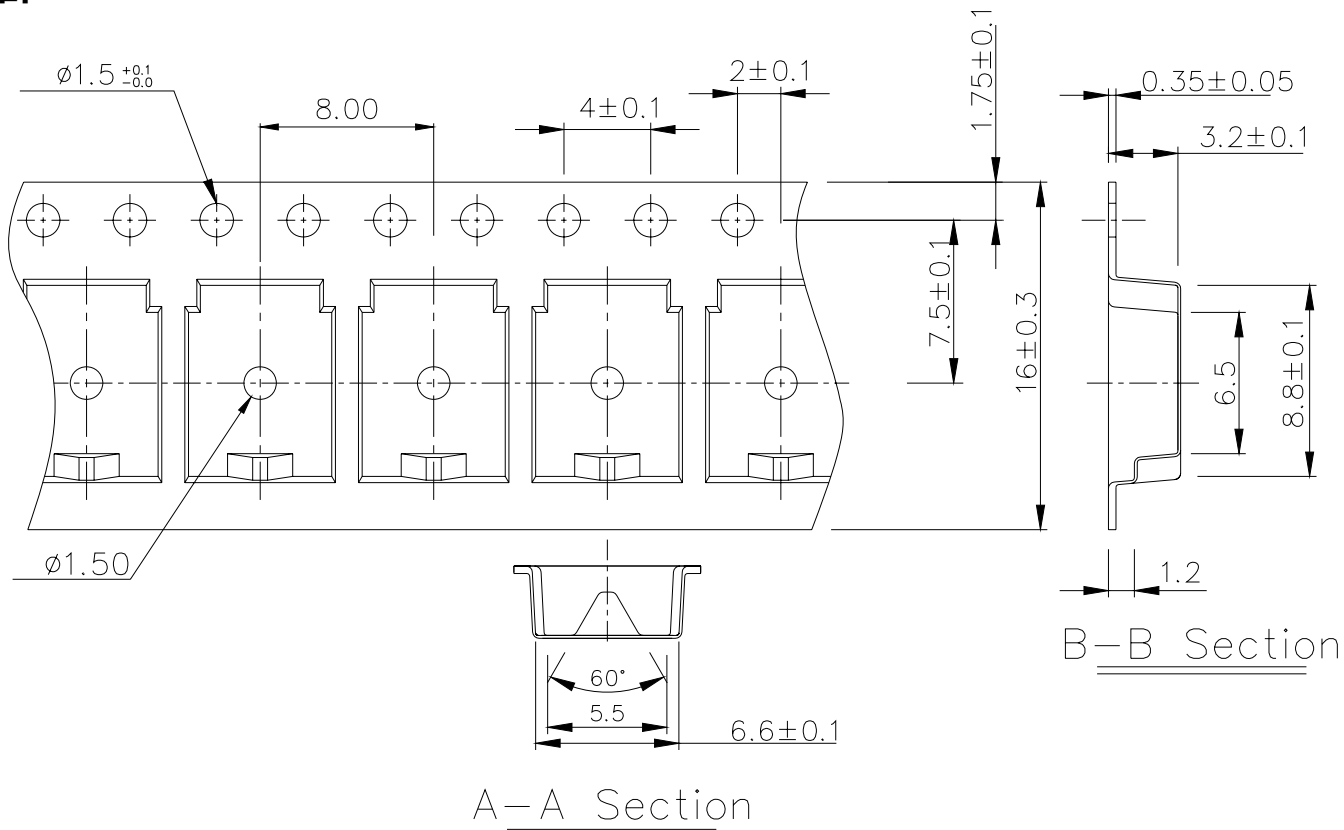


△ **REFLOW SOLDERING**: When applying reflow soldering, the peak temperature or the reflow oven should be set to 260°C max.

## PACKING

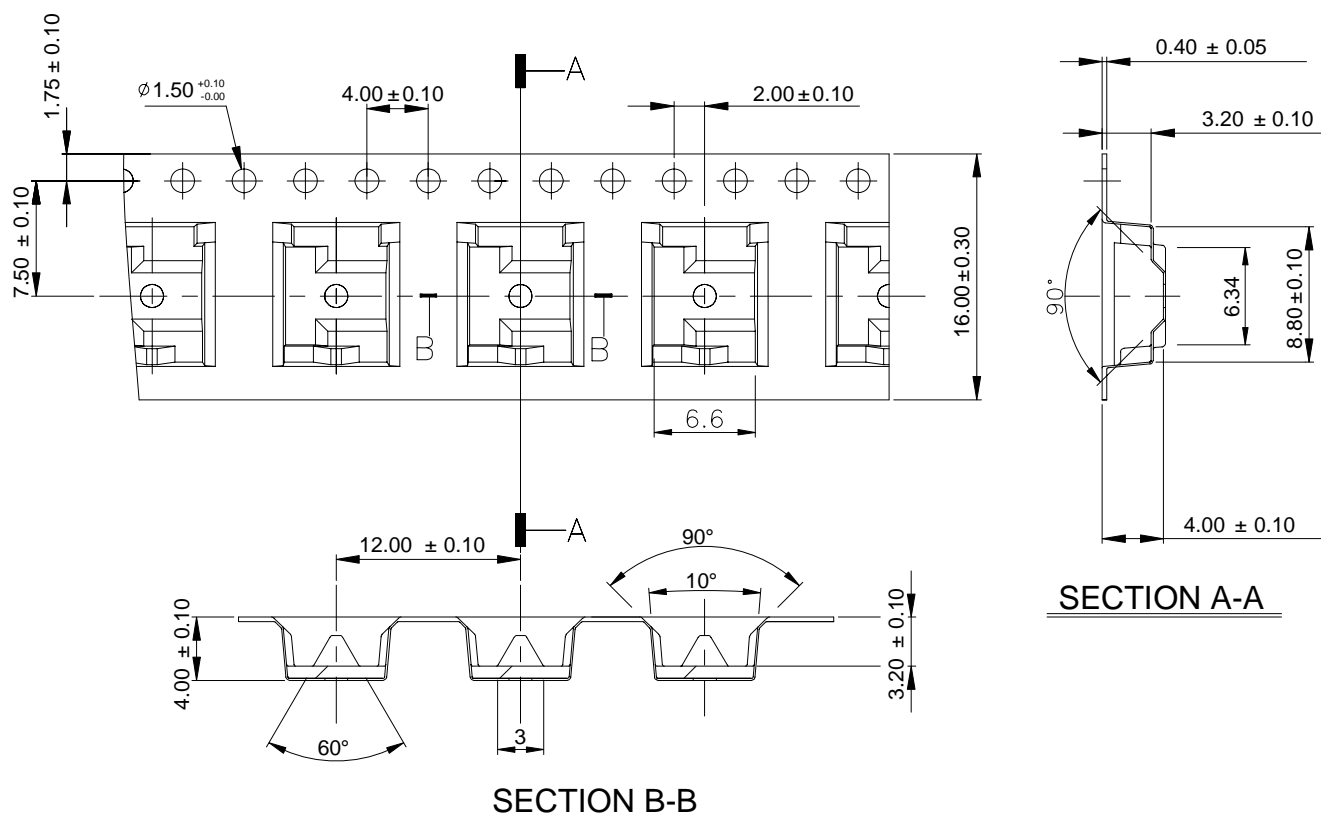
Part Number	Number Per Tube	Number Per Reel
DTS(G)ZM-61	75	2500
DTS(G)ZM-62	75	2500
DTSGZMP-61	-	1400
DTSGZMP-62	-	1400
DTSYH-61	75	-

### DTSGZM-6 REEL



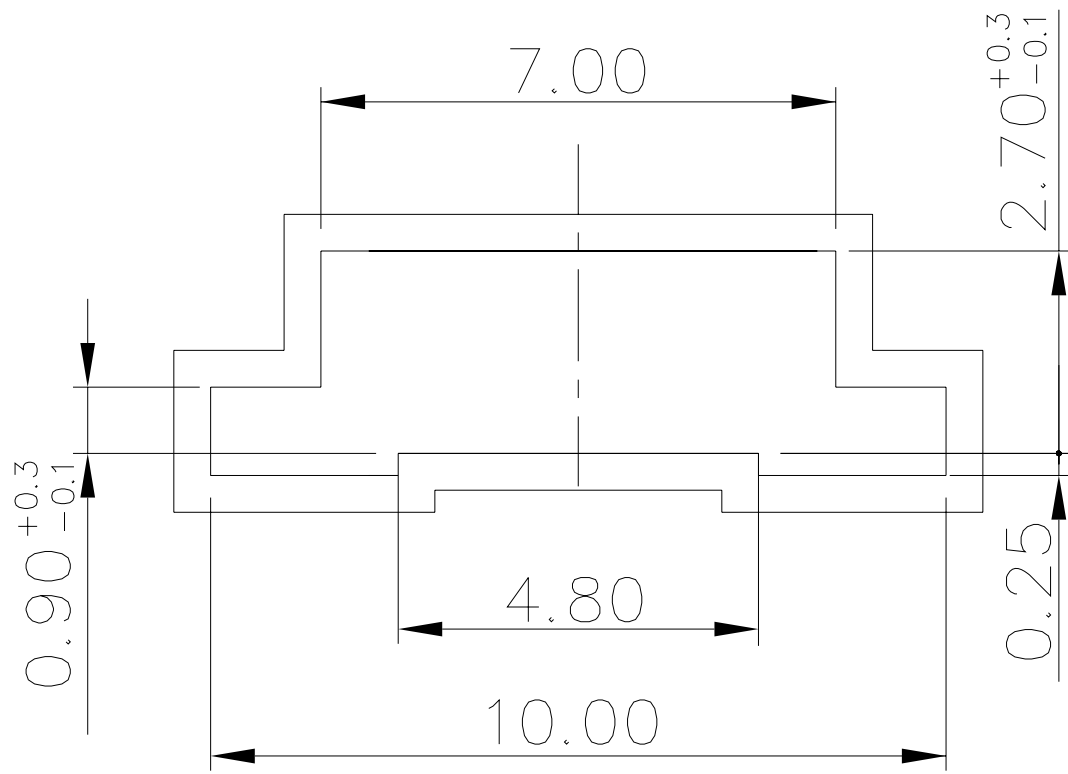
General Tolerance :  $\pm 0.1\text{mm}$

### DTSGZMP-6 REEL



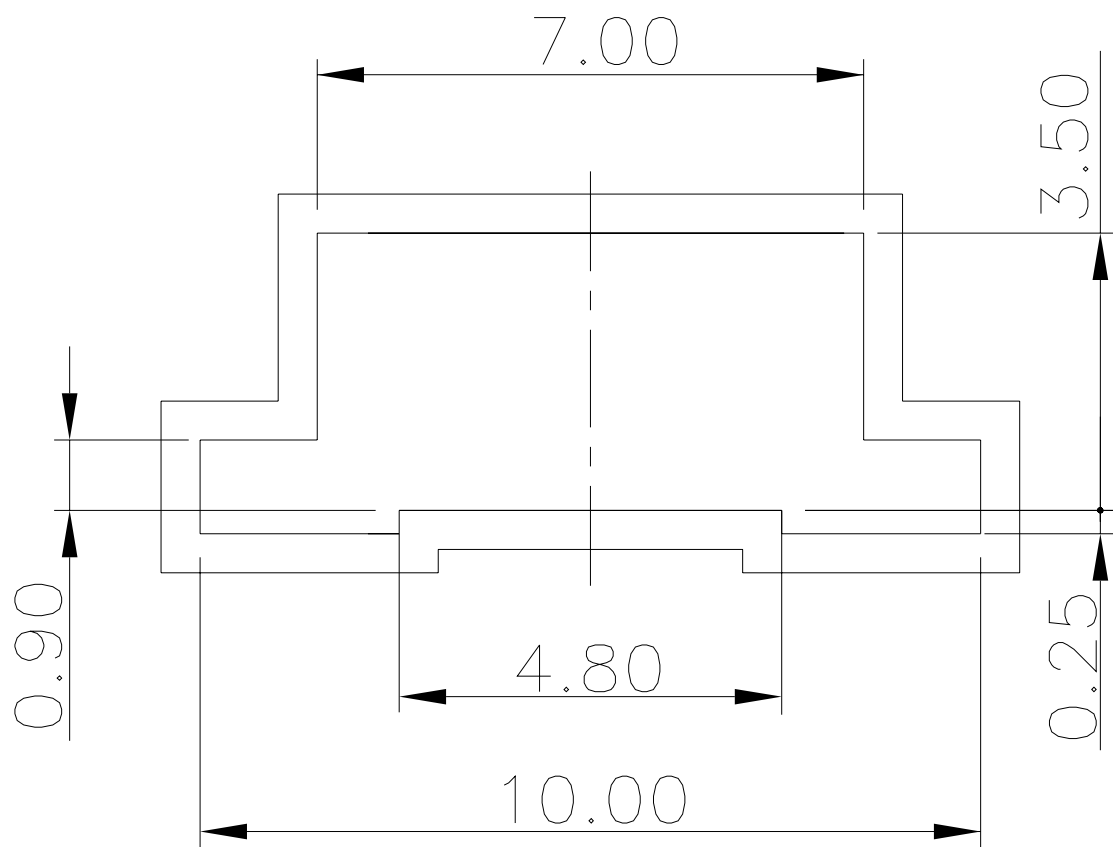
General Tolerance :  $\pm 0.1\text{mm}$

**DTSGZM-61 TUBE**



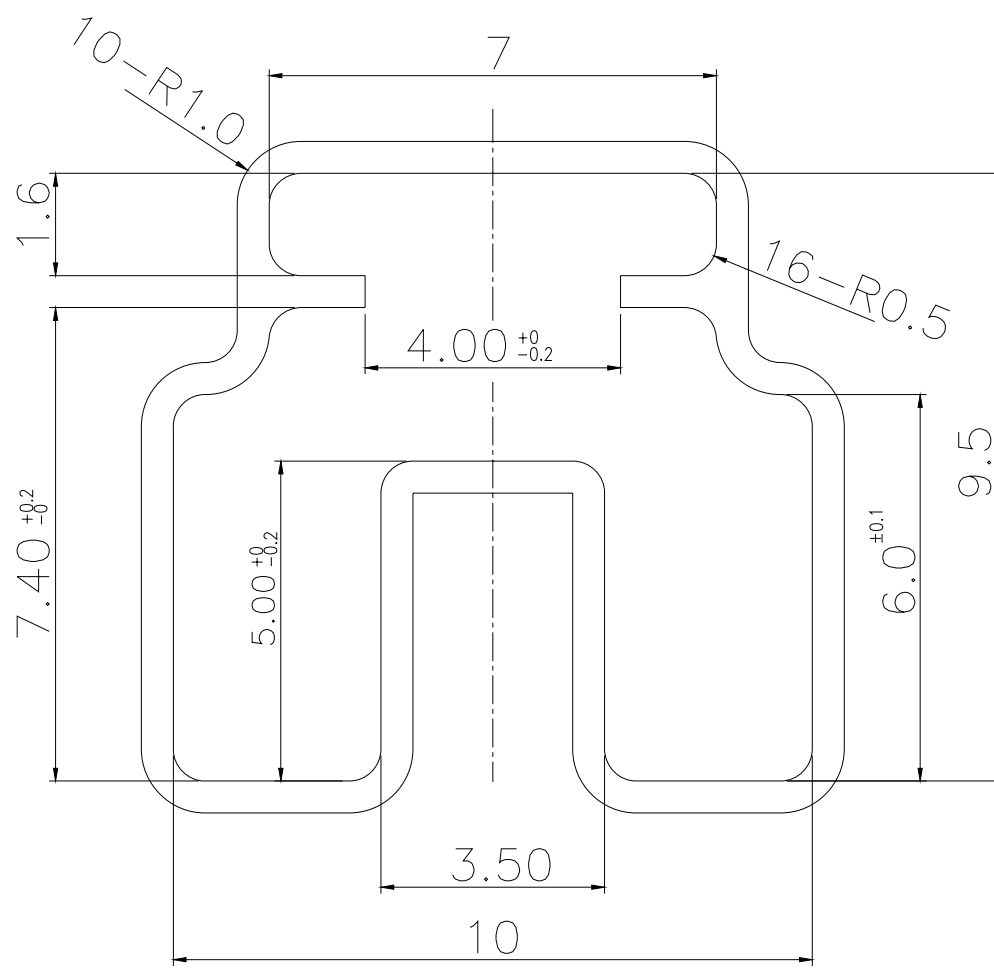
General Tolerance :  $\pm 0.2\text{mm}$

**DTS(G)ZM-62 TUBE**



General Tolerance :  $\pm 0.2\text{mm}$

DTSYH-61 TUBE



General Tolerance :  $\pm 0.2\text{mm}$