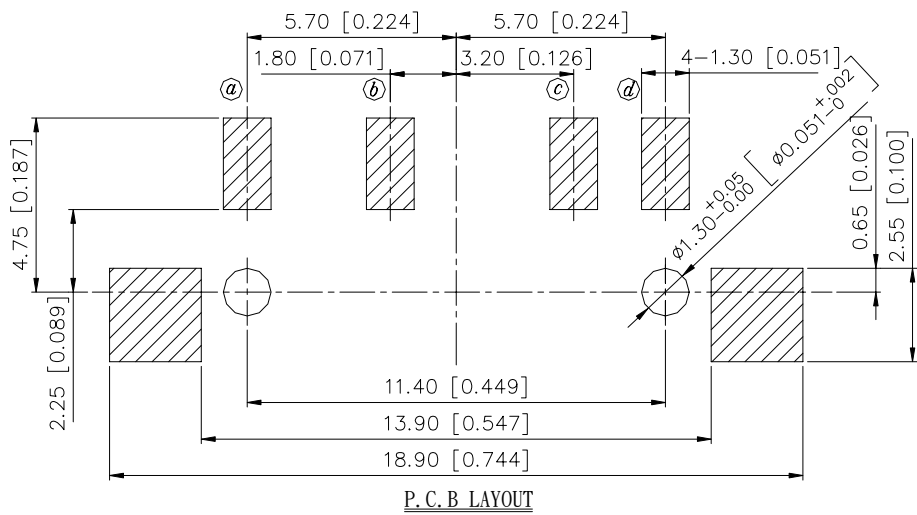
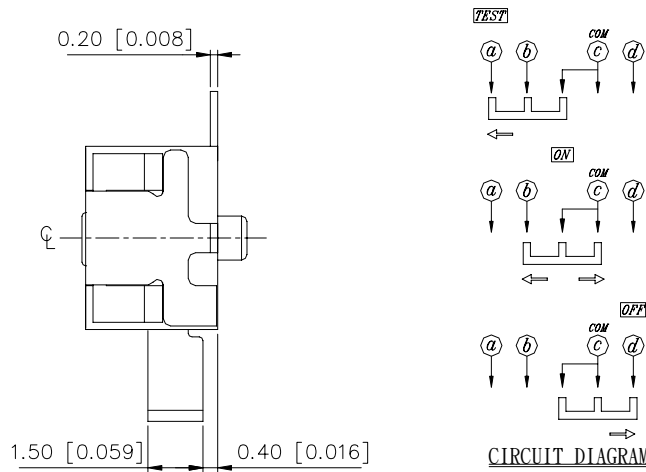
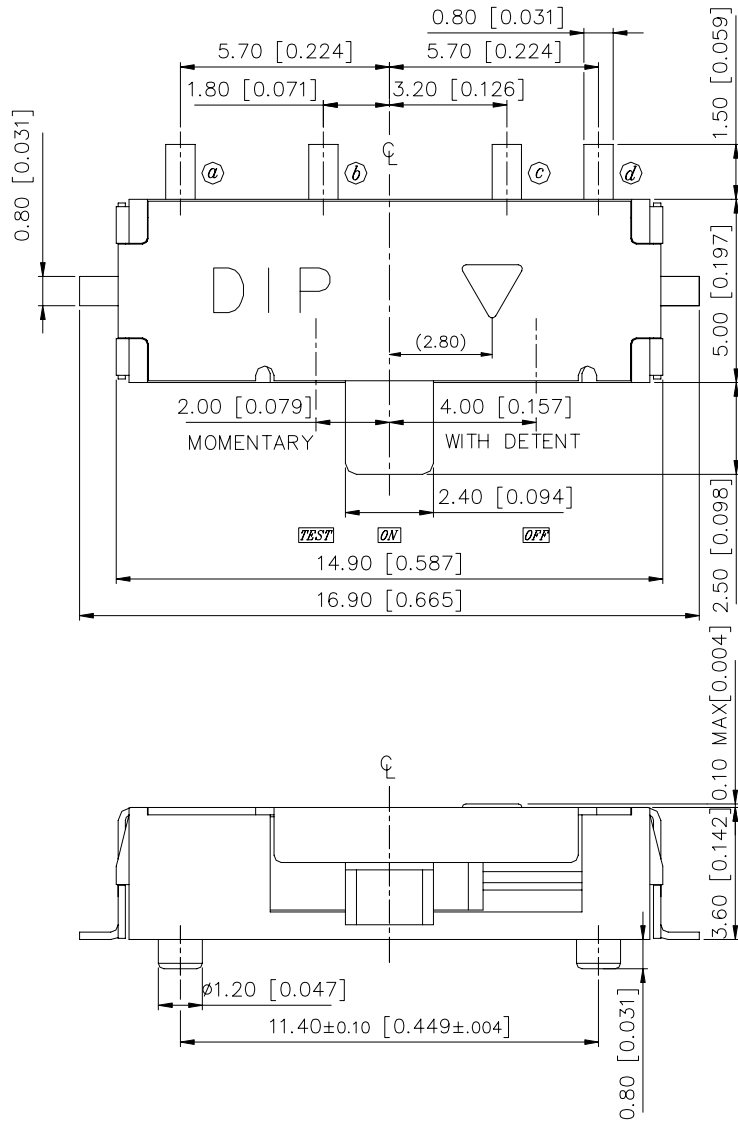


NSS SERIES



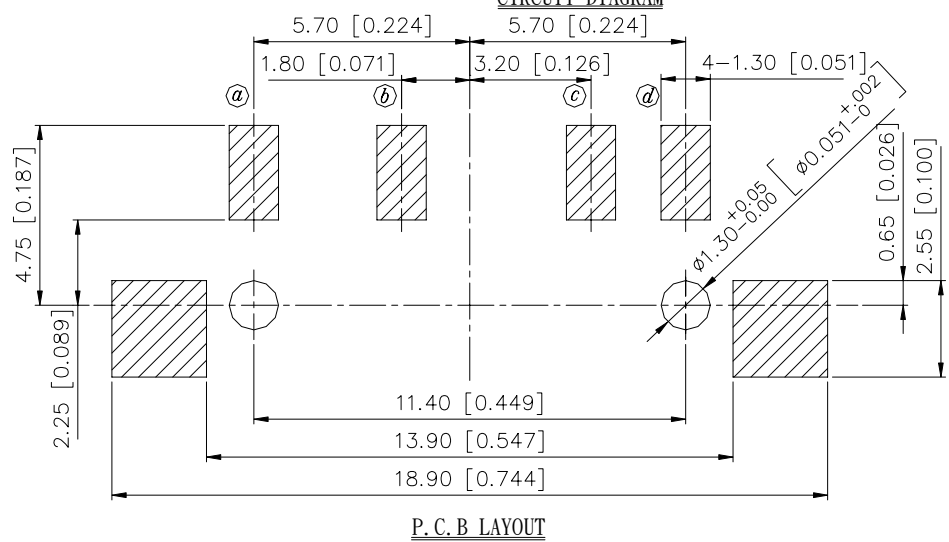
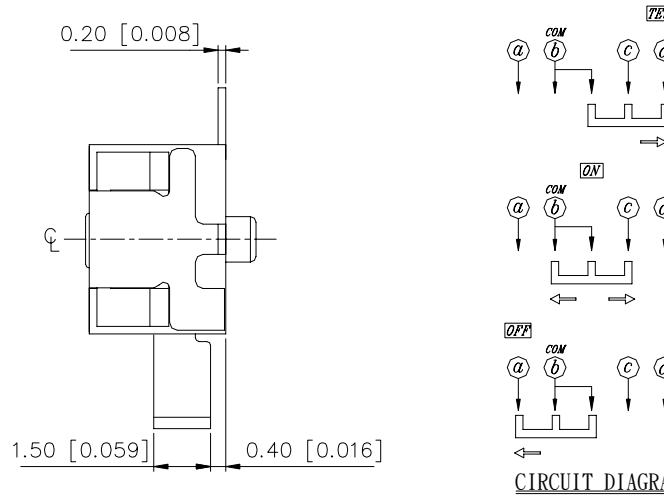
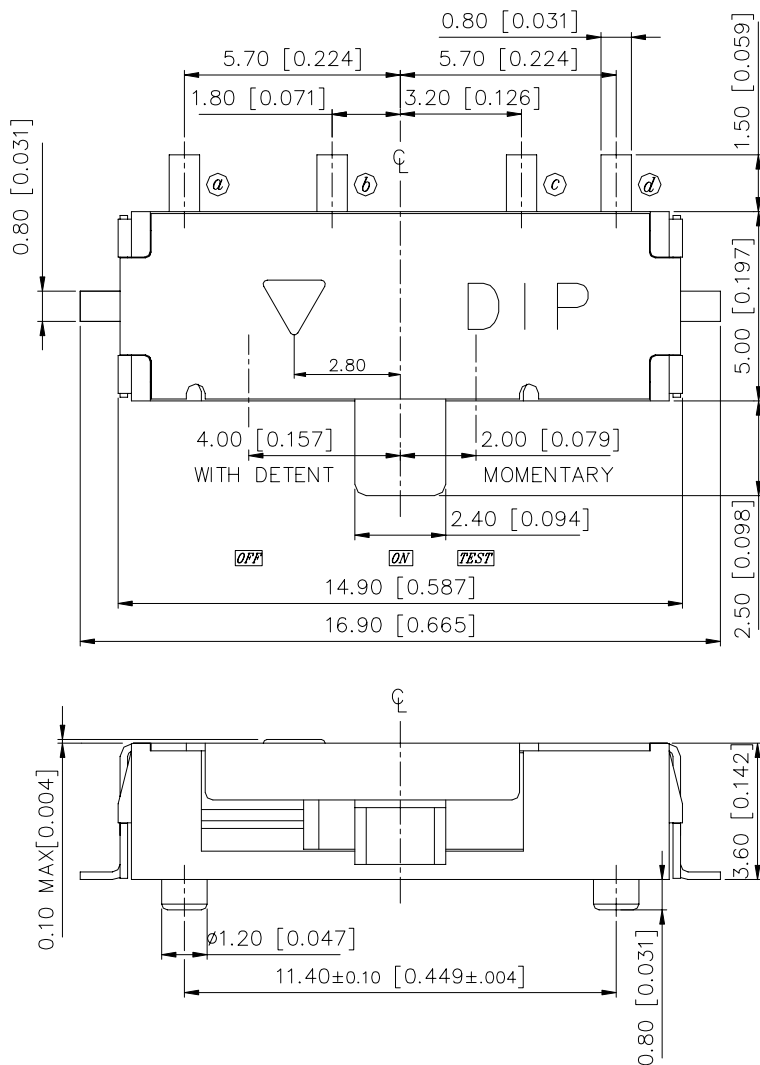
**DIMENSION**

**NSS13-LC**



General Tolerance : ±0.2mm

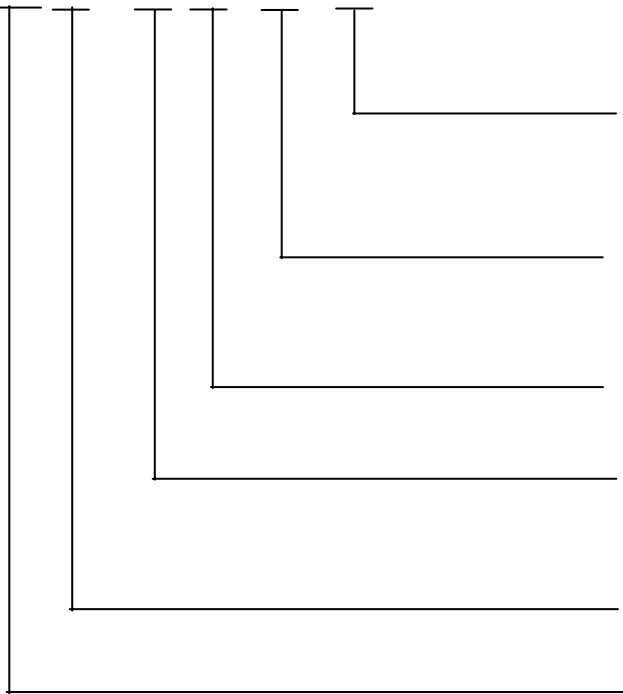
**NSS13-RC**



General Tolerance : ±0.2mm

## HOW TO ORDER

NSS 13 - □ □ - V - □



Package :  
T/R = Tape & Reel

Soldering :  
V = Lead Free Solderable

C=With Post

L =Left  
R =Right

13 = 1P3T

Spring Return Slide Switch

## SPECIFICATION

### △MECHANICAL

Operation Force : ON-OFF~500+100/-200gf  
OFF-ON~320±150gf  
ON-TEST~320±150gf

Stroke: ON-OFF 4mm  
OFF-ON 4mm  
ON-TEST 2mm

Operation Temperature Range : -20°C to +70°C

Storage Temperature Range : -40°C to +85°C

### △ELECTRICAL

Electrical Life : 10,000 cycles

Rating : 0.3A, 4V DC

Contact Resistance : 100mΩ max.

Insulation Resistance : 100MΩ min. at 500V DC

Dielectric Strength : 500V AC/1 minute

Circuit : 1P3T

## MATERIAL

△STEM : NYLON UL94V-0 High-Temp Thermoplastic

Color : Black

△COVER : Nickel silver

△SPRING : Stainless silver

△CONTACT : Alloy Copper, Gold Plated

△BASE : NYLON High-Temp Thermoplastic

Color : Black

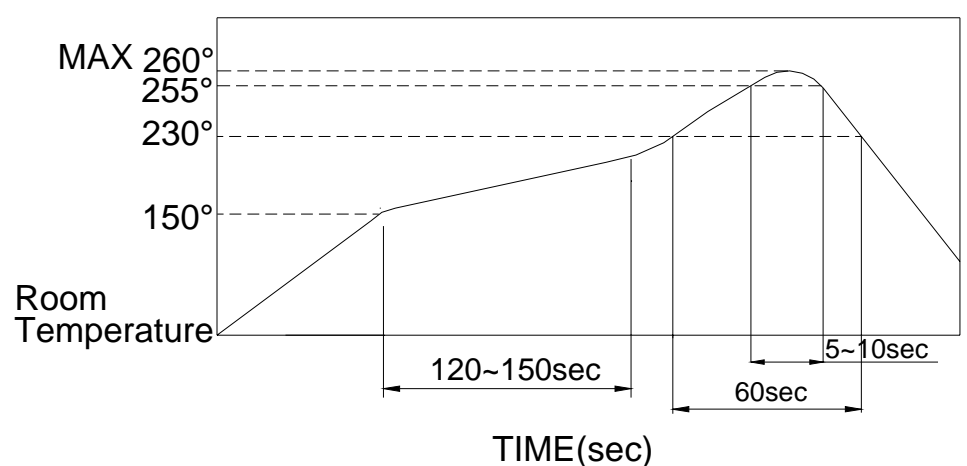
△TERMINAL : Phosphor Bronze, with Silver plating

## SOLDERING PROCESS

△HAND SOLDERING : Use a soldering iron of 30 watts, Controlled at 350°C approximately 5 seconds while applying solder.

△REFLOW SOLDERING : When applying reflow soldering, the peak temperature of the reflow oven should be set to 260°C max.

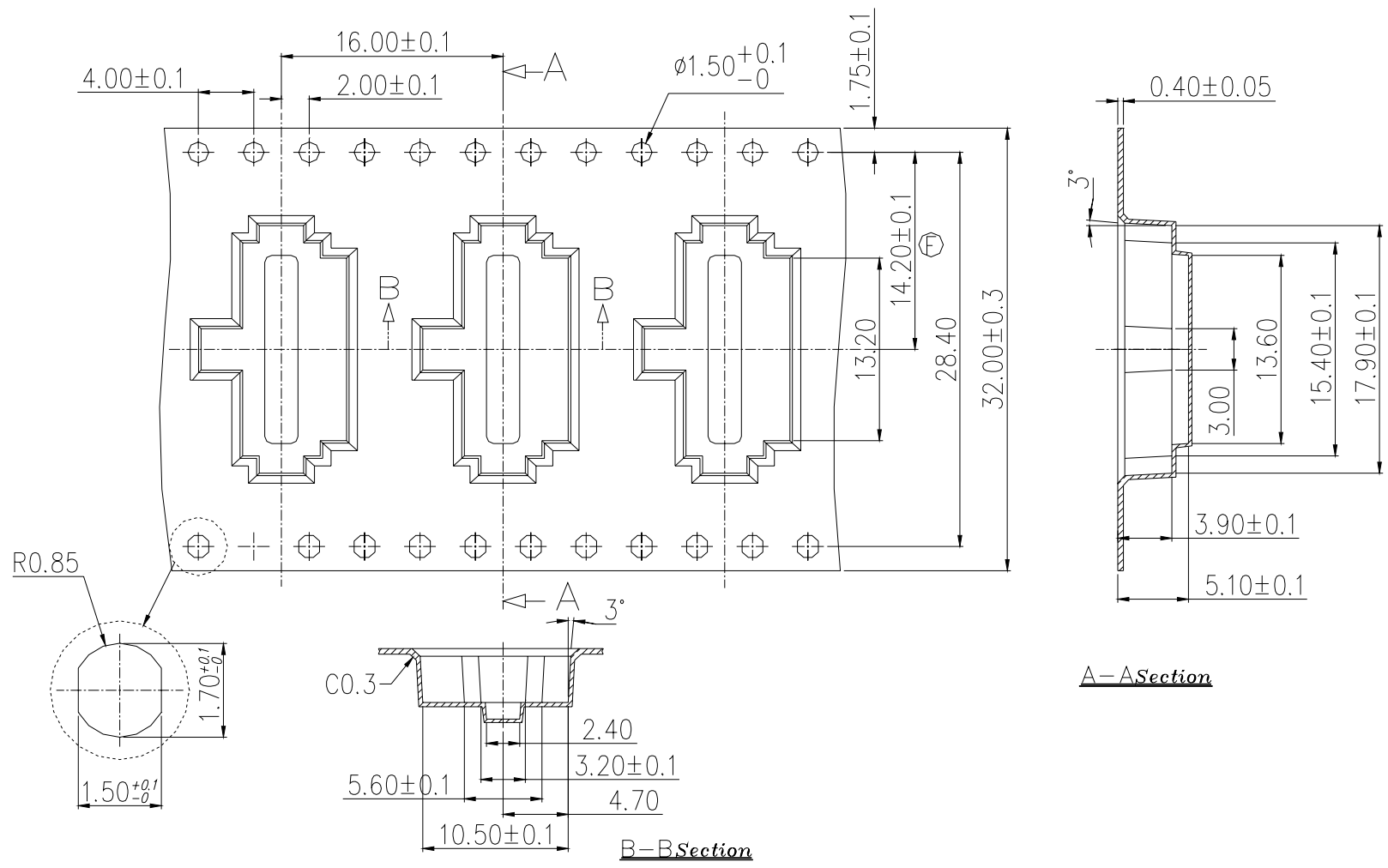
△Temperature Profile :



# PACKING

REEL

Part Number	Number Per Tube	Number Per Reel
NSS13-LC	-	800
NSS13-RC	-	800



General Tolerance :  $\pm 0.1$ mm