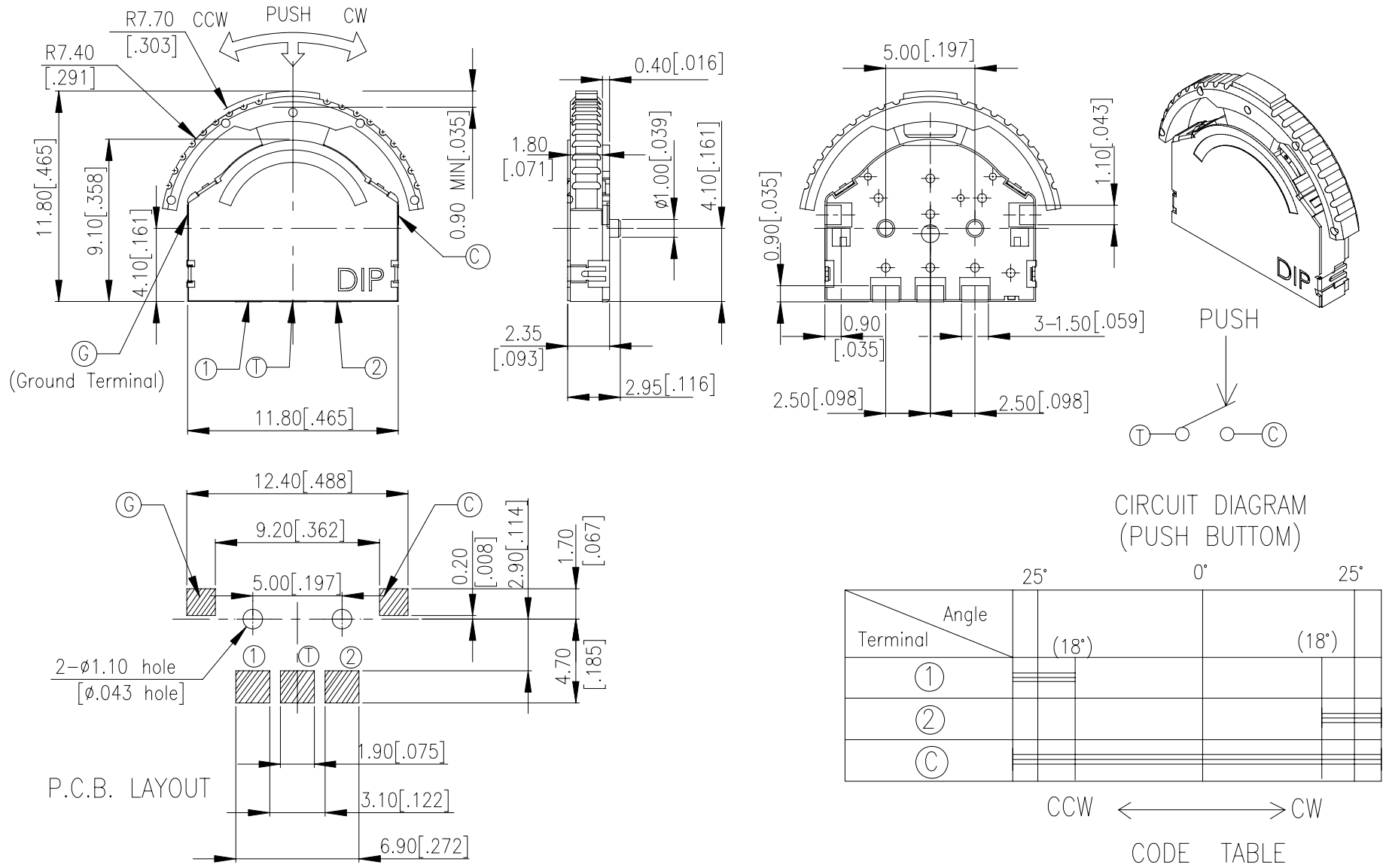


PL3 SERIES

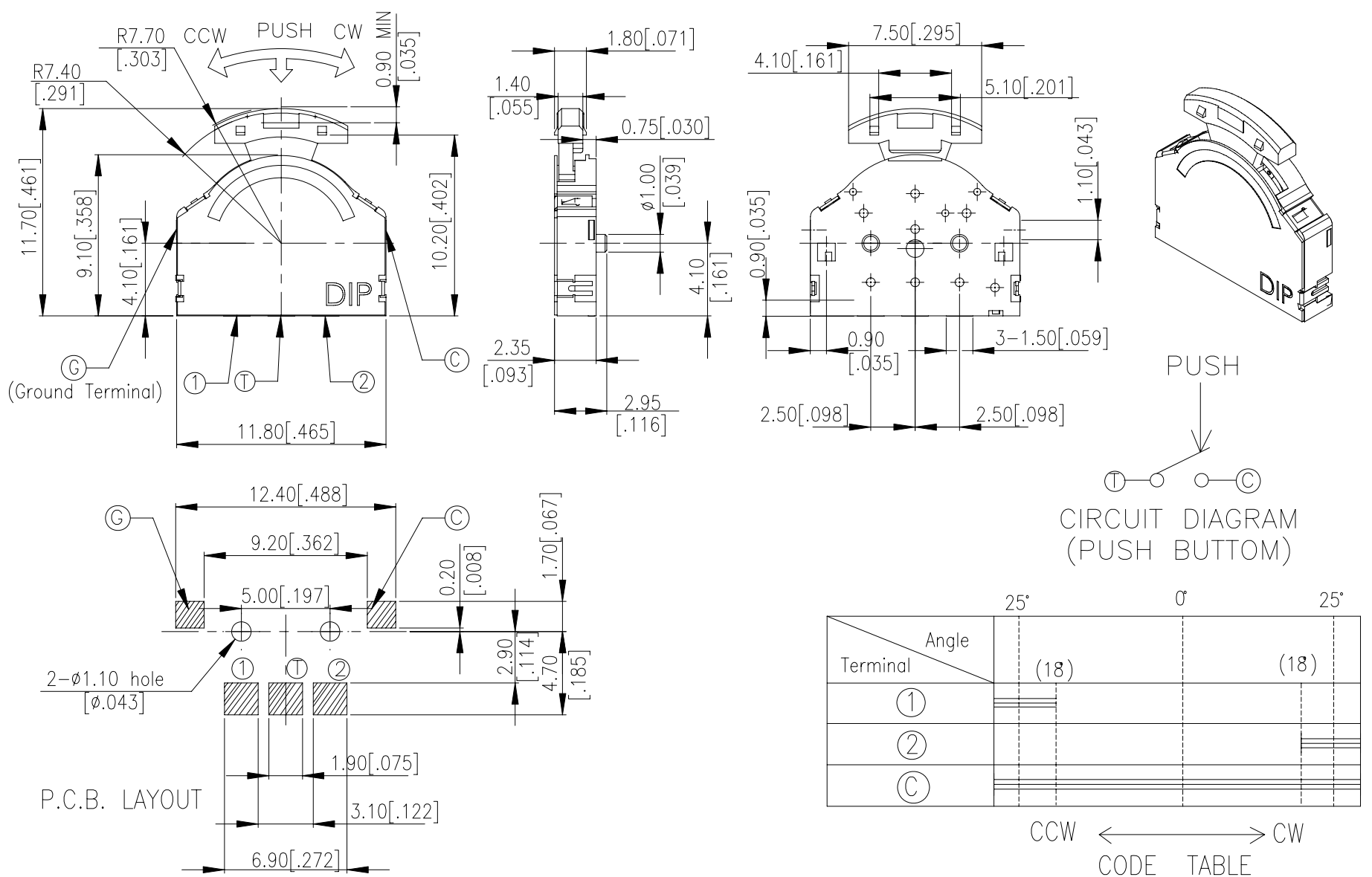
DIMENSIONS

PL3-AC-V



General Tolerance: $\pm 0.2\text{mm}$

PL3-BC-V



General Tolerance: $\pm 0.2\text{mm}$

HOW TO ORDER

PL 3 - C - V -

Package :
T/R=Tape & Reel
V=Lead Free Solderable
C=With Click Feel
Actuator Type
A=Mounting Knob Integrated
B=Mounting Knob
Terminal Positions
3=3 Throws
Push & Lever Switch

SPECIFICATION

△MECHANICAL

Operation Force: Center push $200\pm 100\text{gf}$.
Lever{CW.CCW} $70\pm 50\text{gf}$
Operation Temperature Range: -10°C to $+60^{\circ}\text{C}$
Storage Temperature Range: -30°C to 80°C
Mechanical Life: 100,000 cycles.

△ELECTRICAL

Electrical Life: 100,000 cycles
Rating: 10mA , 5VDC
Contact Resistance: 500Ω max.
Insulation Resistance: $100\text{M}\Omega$ min. 100V DC
Dielectric Strength: 100VAC / 1 minute
Circuit: Single pole single throw.

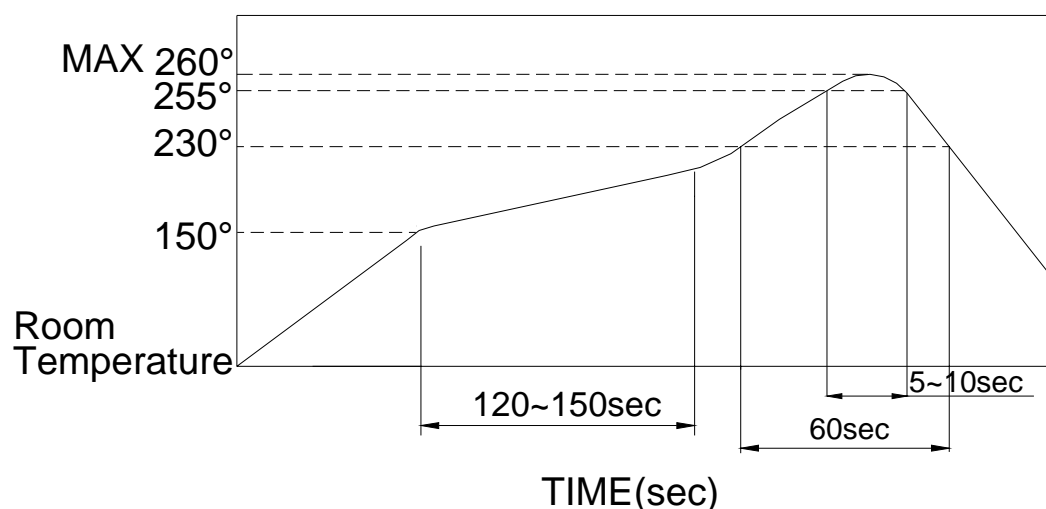
MATERIAL

△Cover : Stainless steel.
△BASE : UL940V-0 Nylon High-Temp Thermoplastic.
Color : Black
△STEM : UL940V-0 Nylon High-Temp Thermoplastic.
Color : Black
△CONTACT : Phosphor bronze with silver cladding at Contact surface.
△TERMINAL : Phosphor bronze with silver cladding at Contact surface.
△SPRING : Stainless steel.

SOLDERING PROCESS

△HAND SOLDERING : Use a soldering iron of 30 watts, Controlled at 350°C approximately 5 seconds while applying solder.

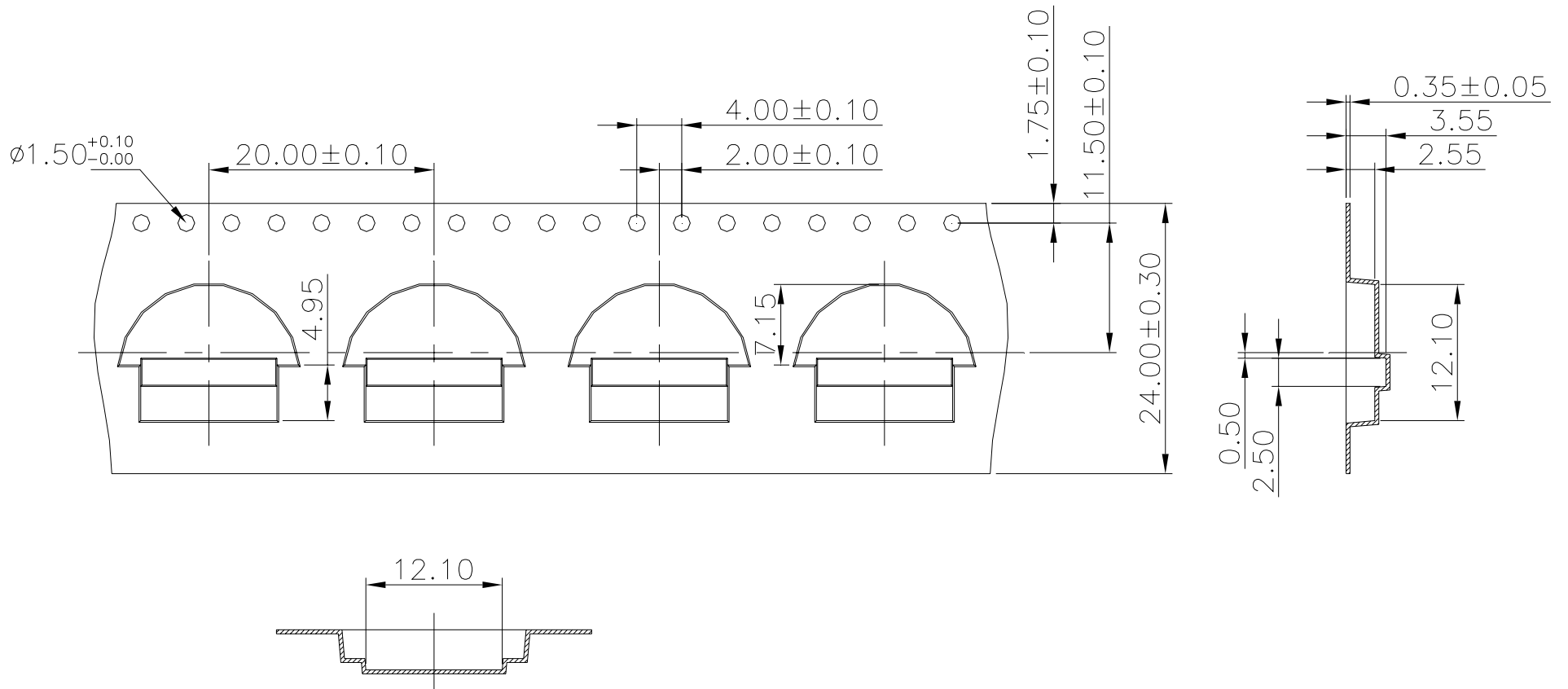
△REFLOW SOLDERING : When applying reflow soldering, the peak temperature or the reflow oven should be set to 260°C max.



PACKING

Part Number	Number Per Reel	
PL3-AC	900	
PL3-BC	900	

PL3-A REEL



General Tolerance : $\pm 0.1\text{mm}$