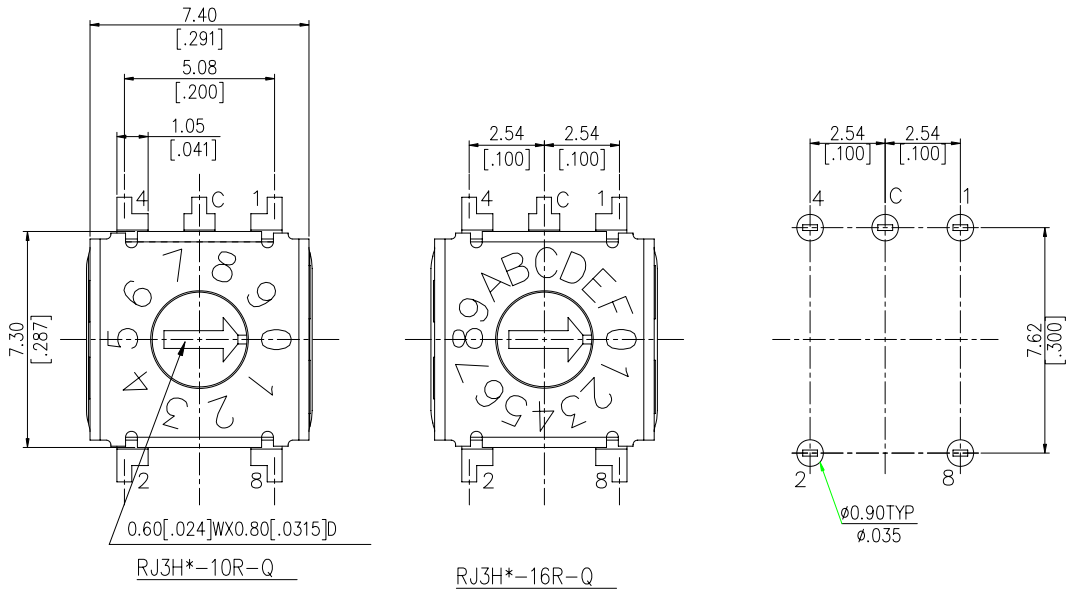




RJ SERIES

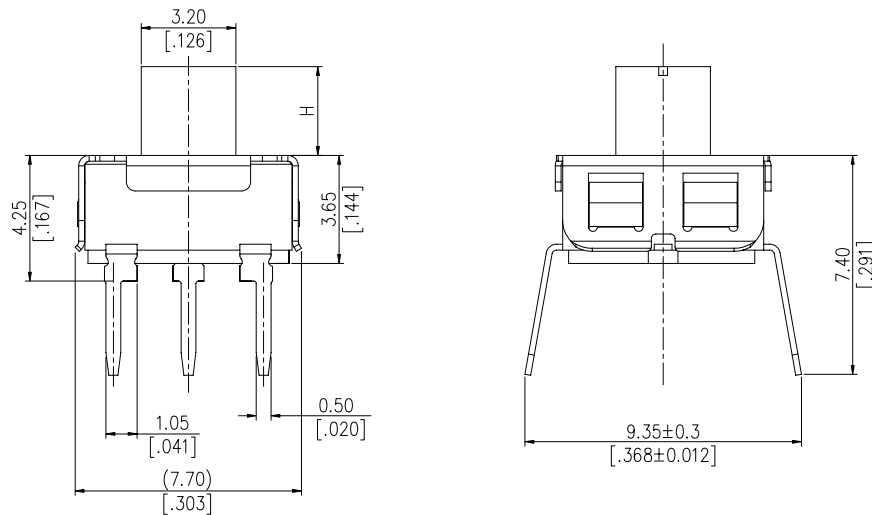


DIMENSIONS
RJH3 SERIES



TYPE	POSITION □□R	CODE			
		1	2	4	8
10 STEP	0	●	●	●	●
	1	○	●	●	●
	2	●	○	●	●
	3	○	○	●	●
	4	●	●	○	●
	5	○	●	○	●
	6	●	○	○	●
	7	○	○	○	●
	8	●	●	●	○
	9	○	●	●	○
16 STEP	A	●	○	●	○
	B	○	○	●	○
	C	●	●	○	○
	D	○	●	○	○
	E	●	○	○	○
	F	○	○	○	○

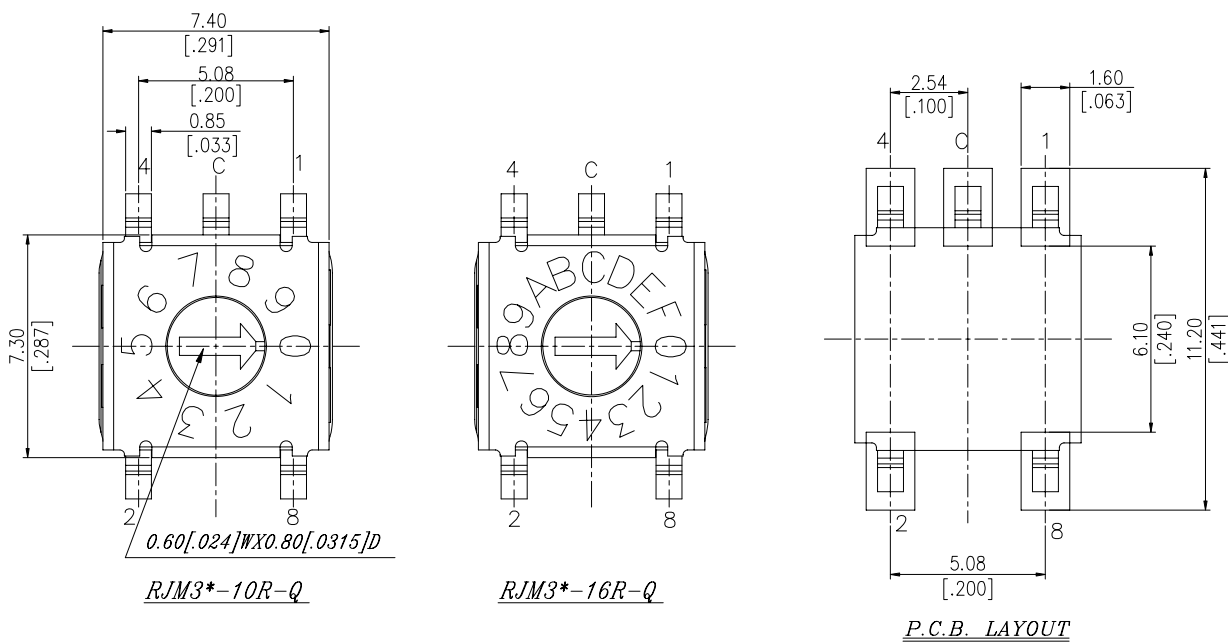
CIRCUIT CHART



NAME	H
RJH3-10R-Q	0
RJH3-16R-Q	
RJH3H-10R-Q	3.00 [.1181]
RJH3H-16R-Q	

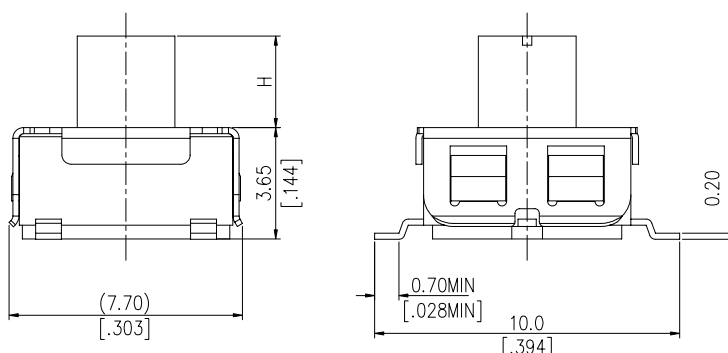
General Tolerance : ±0.2mm

RJM3 SERIES



TYPE	POSITION □□R	CODE			
		1	2	4	8
10 STEP	0	●	●	●	●
	1	○	●	●	●
	2	●	○	●	●
	3	○	○	●	●
	4	●	●	○	●
	5	○	●	○	●
	6	●	○	○	●
	7	○	○	○	●
	8	●	●	●	○
	9	○	●	●	○
16 STEP	A	●	○	●	○
	B	○	○	●	○
	C	●	●	○	○
	D	○	●	○	○
	E	●	○	○	○
	F	○	○	○	○

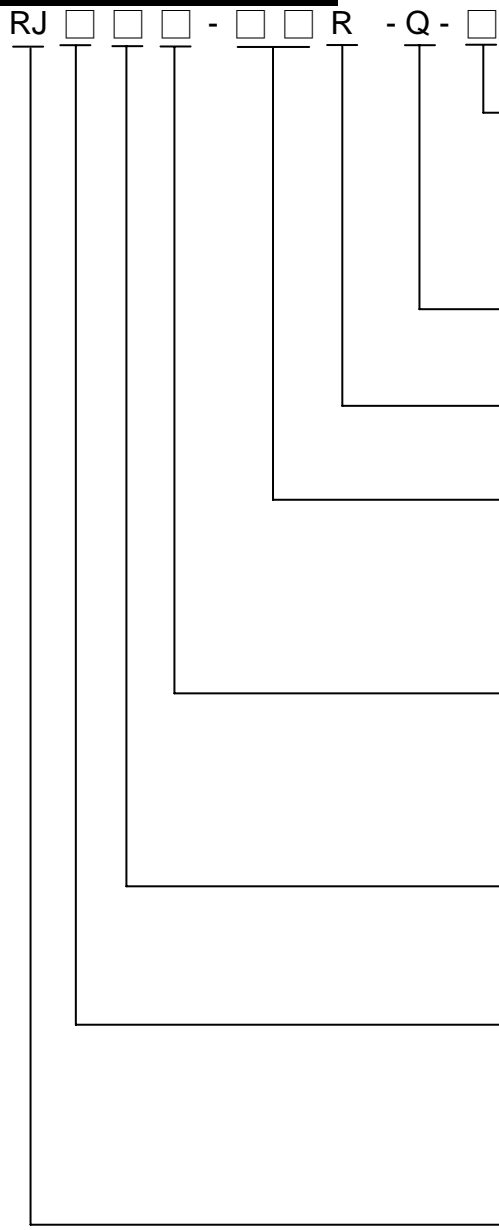
CIRCUIT CHART



NAME	H
RJM3-10R-Q	0
RJM3-16R-Q	
RJM3H-10R-Q	3.00 [.1181]
RJM3H-16R-Q	

General Tolerance : ±0.2mm

HOW TO ORDER



- Package :
□ = Tube
T/R = Tape & Reel
- Halogen Free
- R = Real Codes
- Number Of Steps :
10 = 10 Steps
16 = 16 Steps
- Actuator Type :
□ = Recessed Actuator
H = High Actuator (3.0 mm)
- Number Of Terminals :
3 = 3x2
- Termination Type :
M = S.M.T
H = Through Hole
- Rotary Type 7x7

SPECIFICATIONS

△MECHANICAL

Operating Force: 200gf-cm max.

△ENVIRONMENTAL

Operating Temperature: -40°C to +85°C

Storage Temperature: -40°C to +85°C

△ELECTRICAL

Electrical Life: 20,000 steps

Switching Rating: 24VDC, 25mA

Contact Resistance: (a) 100mΩ max. (initial)
(b) 200mΩ (final – after test)

Insulation Resistance: 100MΩ min. at 250VDC

Voltage Proof: 250VAC for 1 minute

MATERIAL

△BASE : UL 94V-0 High-temp Thermoplastic
Color: Black

△ACTUATOR: UL 94V-0 High-temp Thermoplastic
Color: White

△CONTACT: Alloy copper with gold plated

△TERMINAL: Brass with gold plated

△COVER: STAINLESS STEEL

△SEAL : SILICONE RUBBER

Color: Red

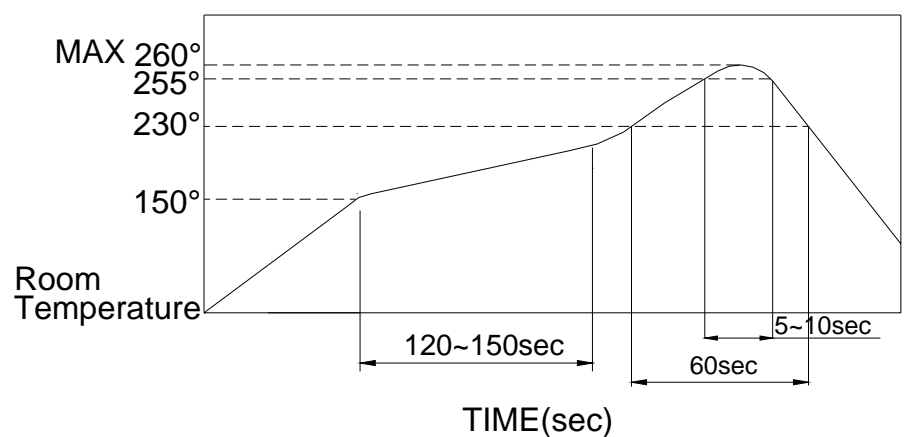
△SPRING PLATE : STAINLESS STEEL

SOLDERING PROCESS

△HAND SOLDERING : Use a soldering iron of 30 watts, controlled at (350°C) approximately max 5 seconds.

△WAVE SOLDERING: Recommended temperature at 500°F (260°C) max. 5 seconds. (For through hole type).

△REFLOW SOLDERING: When applying reflow soldering, the peak temperature of the reflow oven should be set to 260°C max.



PACKING

Part Number

Number Per Tube

Number Per Reel

RJM3-□□R

RJM3H-□□R

RJH3-□□R

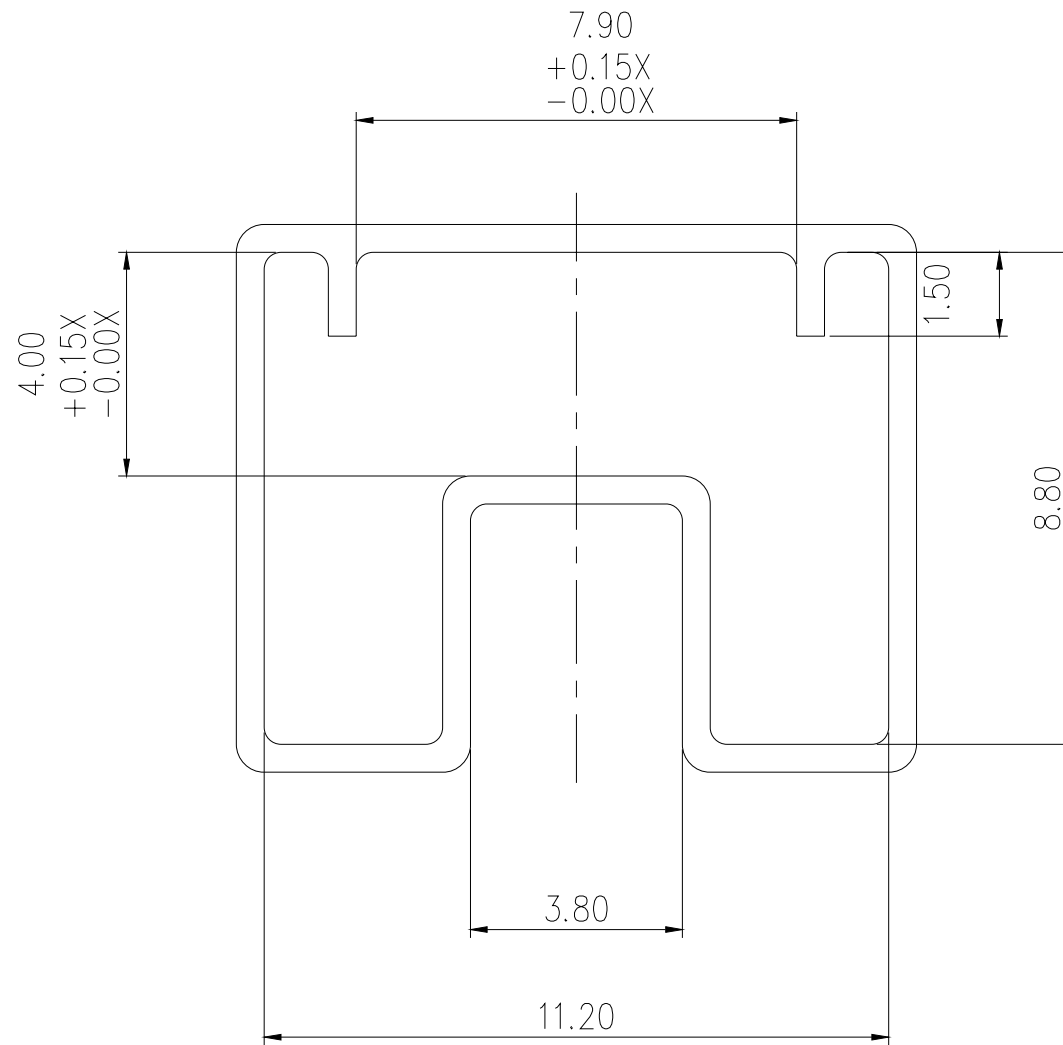
RJH3H-□□R

62

1200

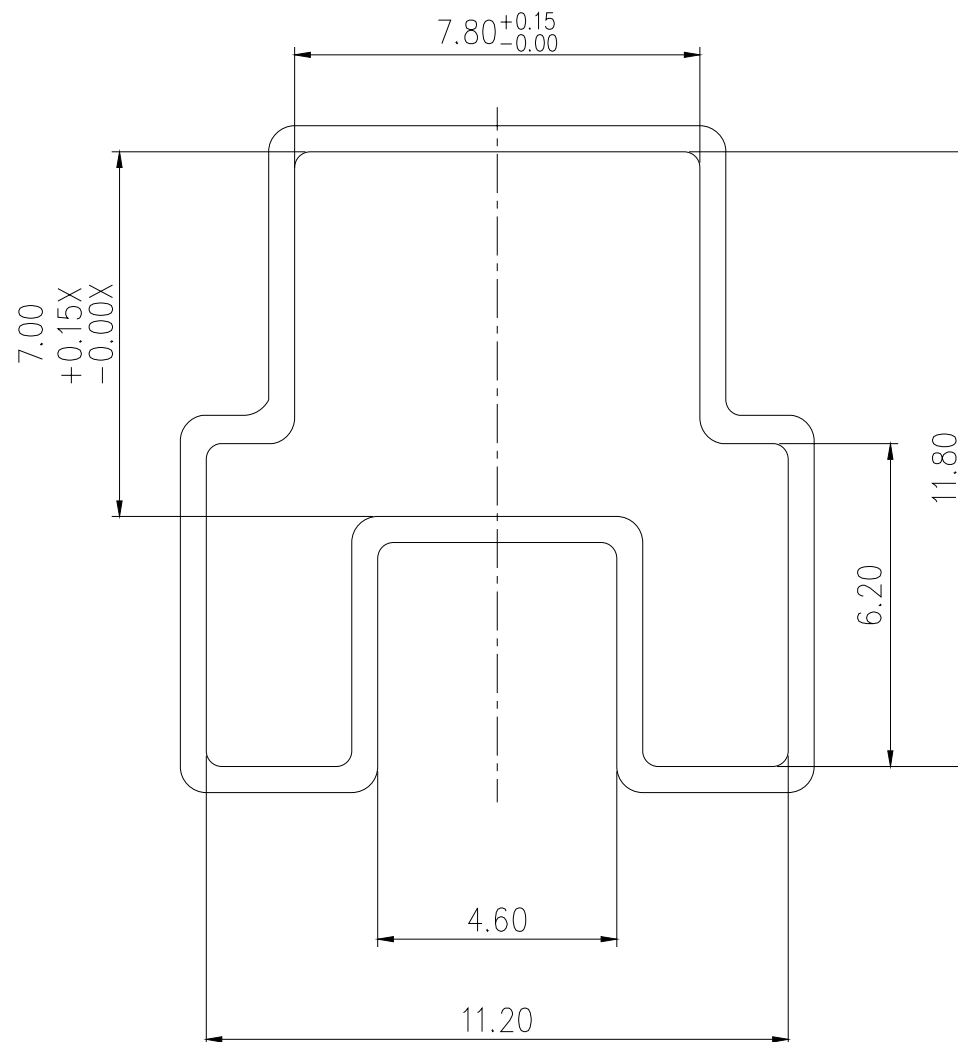
650

RJH TYPE TUBE



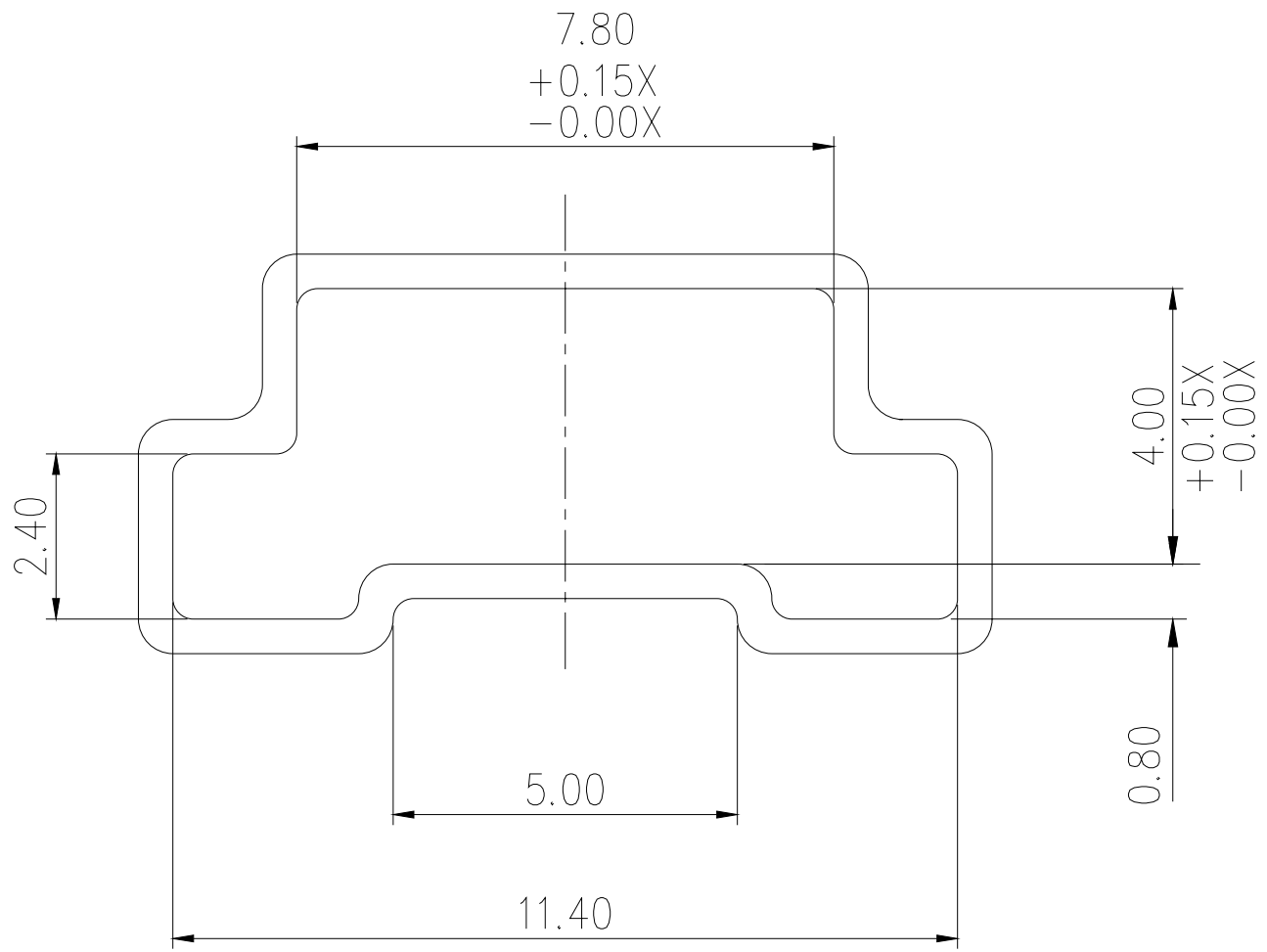
General Tolerance : $\pm 0.2\text{mm}$

RJH□H TYPE TUBE



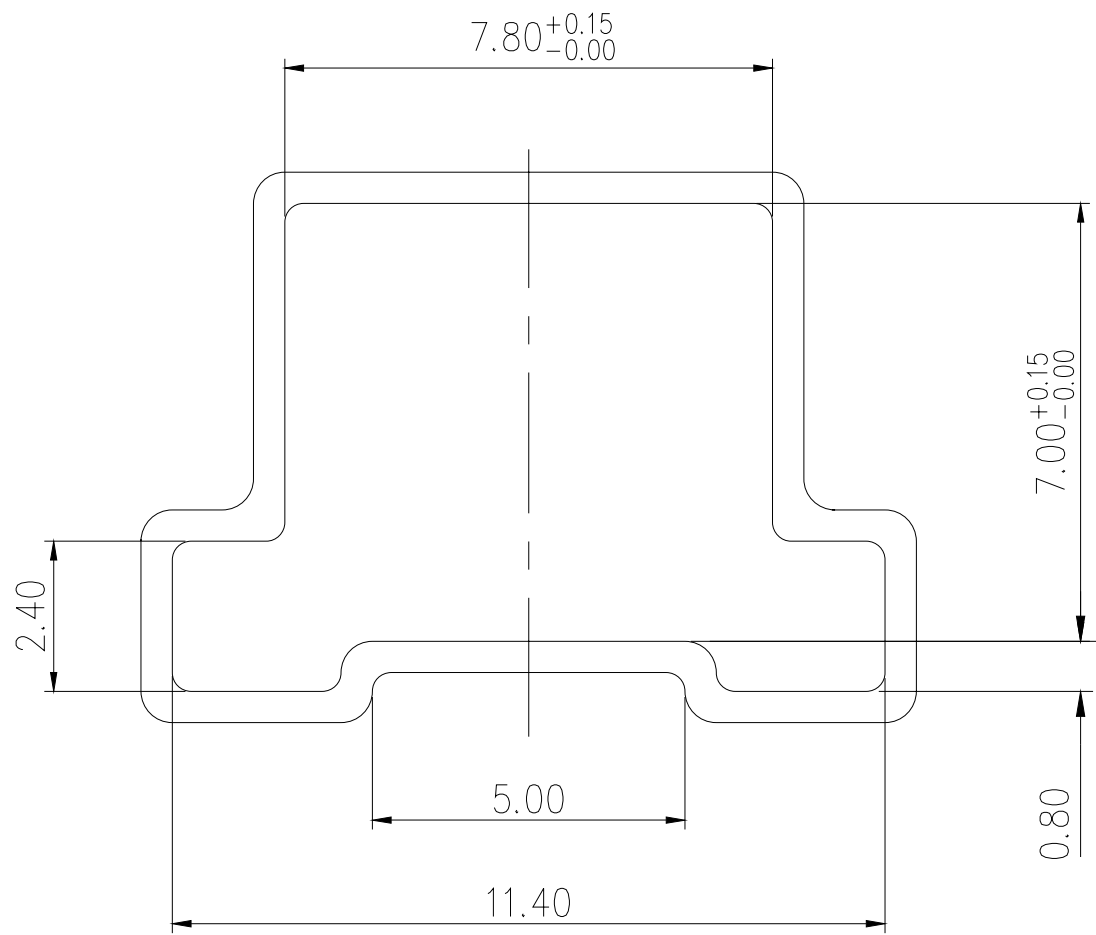
General Tolerance : $\pm 0.2\text{mm}$

RJM TYPE TUBE



General Tolerance : $\pm 0.2\text{mm}$

RJM□H TYPE TUBE



General Tolerance : $\pm 0.2\text{mm}$