



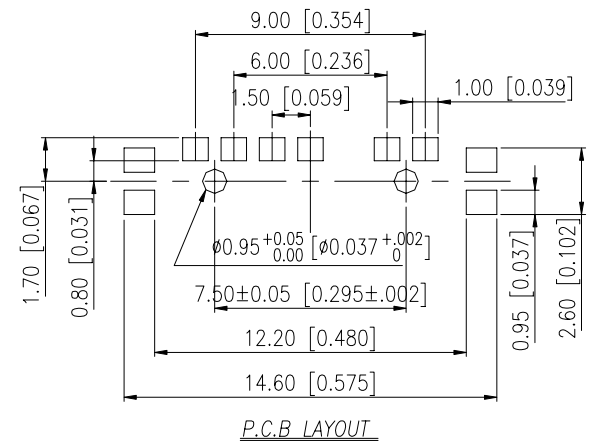
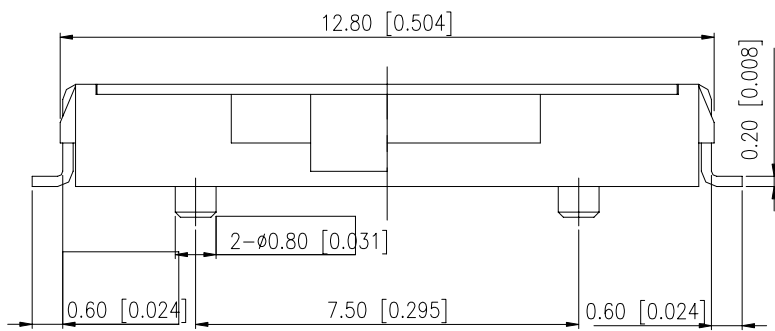
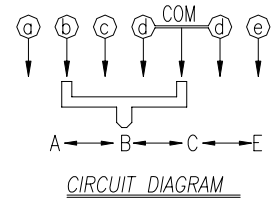
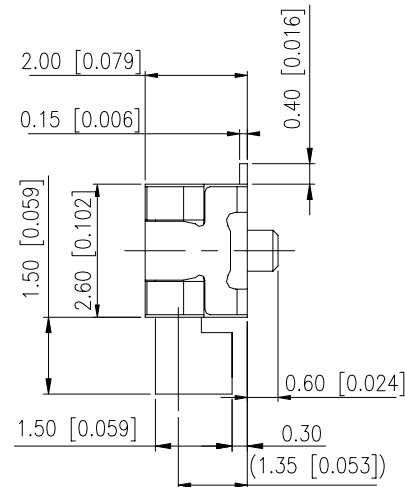
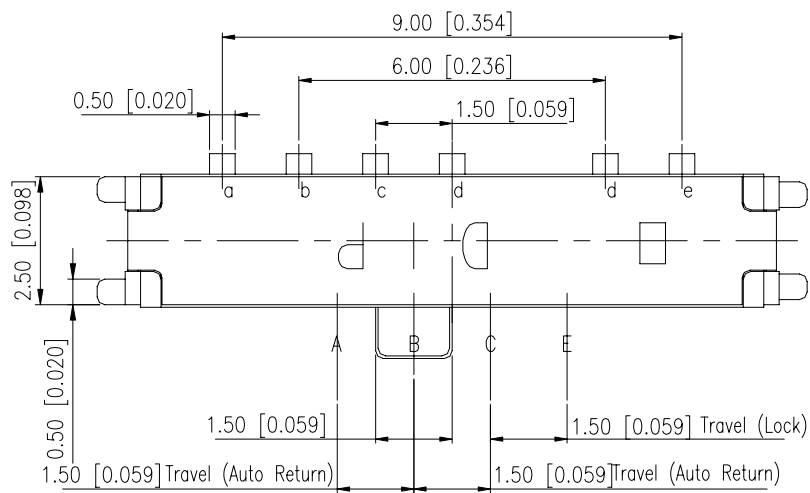
DIPTRONICS MANUFACTURING INC.

SE14 SERIES



DIMENSIONS

SE14

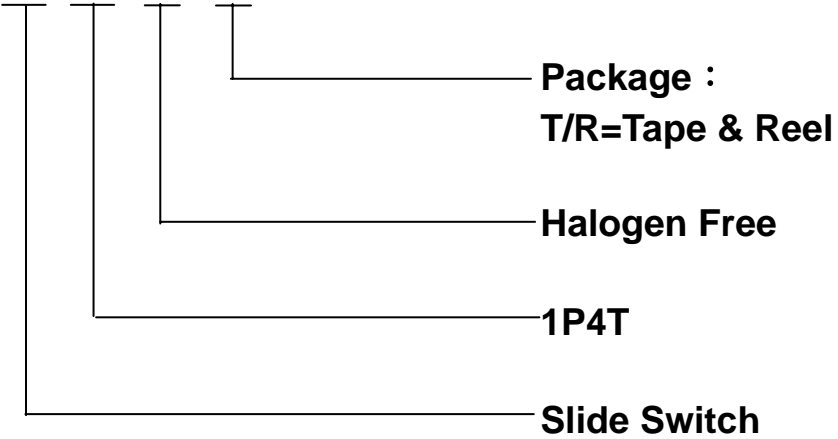


Operation Force	
B → A	120 ± 70gf
B → C	120 ± 70gf
B → E	(350 ± 180gf)
E → B	(150 ± 100gf)

****GENERAL TOLERANCES MAX:±0.2mm.****

HOW TO ORDER

SE14-Q-□



Package :
T/R=Tape & Reel

Halogen Free

1P4T

Slide Switch

SPECIFICATION

△ MECHANICAL

Mechanical Life : 10,000 cycles.

Operation Force :

B→A	50~190gf (0.94~1.86N)
B→C	50~190gf (0.94~1.86N)
B→E	300±600gf (2.94N±5.88N)
E→B	50~250gf (0.94~2.54N)

Stroke :

B→A	1.50mm
B→C	1.50mm
B→E	3.00mm

Operation Temperature Range : -20°C to +80°C

Storage Temperature Range : -40°C to +85°C

△ ELECTRICAL

Electrical Life : 10,000 cycles

Switching Rating : 0.3A, 10 DC

Contact resistance : 100mΩ max.

Insulation Resistance : 500V DC, 1 minute ± 5 sec

MATERIAL

△ Cover : Stainless Steel

△ Stem : High-Temp Thermoplastic LCP

Color : Black

△ Contact : Alloy Copper with Silver Plating

△ Recoil : Stainless Steel

△ Base : High-Temp Thermoplastic LCP

Color : Black

△ Terminal : Brass, With Silver Plating

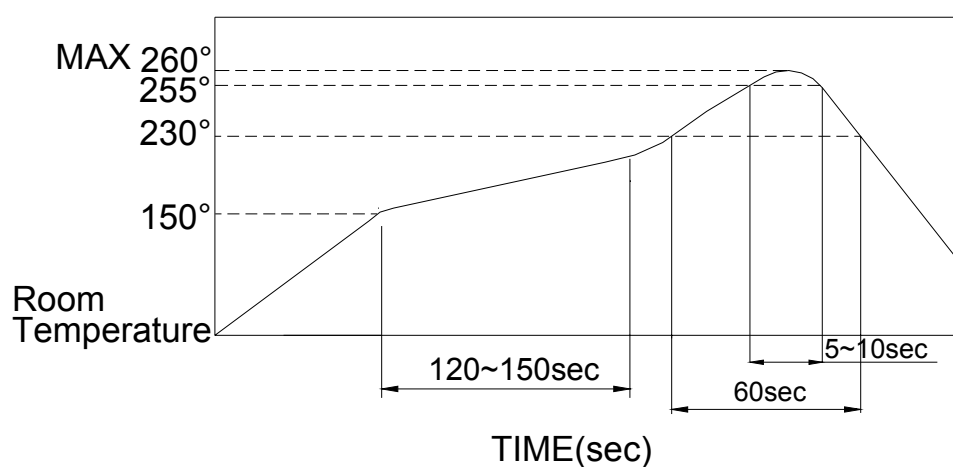
SOLDERING PROCESS

△CLEANING:

1. Only Tape sealed types apply to wash process.
2. Do not remove the tape before wash process.
3. After soldering process, do not continue the wash process immediately. Please wait for at least 3 minutes.
4. Apply alcoholic solvents as cleaning agent do not use other solvents or water.
5. Ultrasonic cleaning is not recommended.
6. The cleaning process per stage is max. 1 minute and the whole cleaning time are not to exceed 3 minutes.
7. Do not impose any external force on switch while washing.

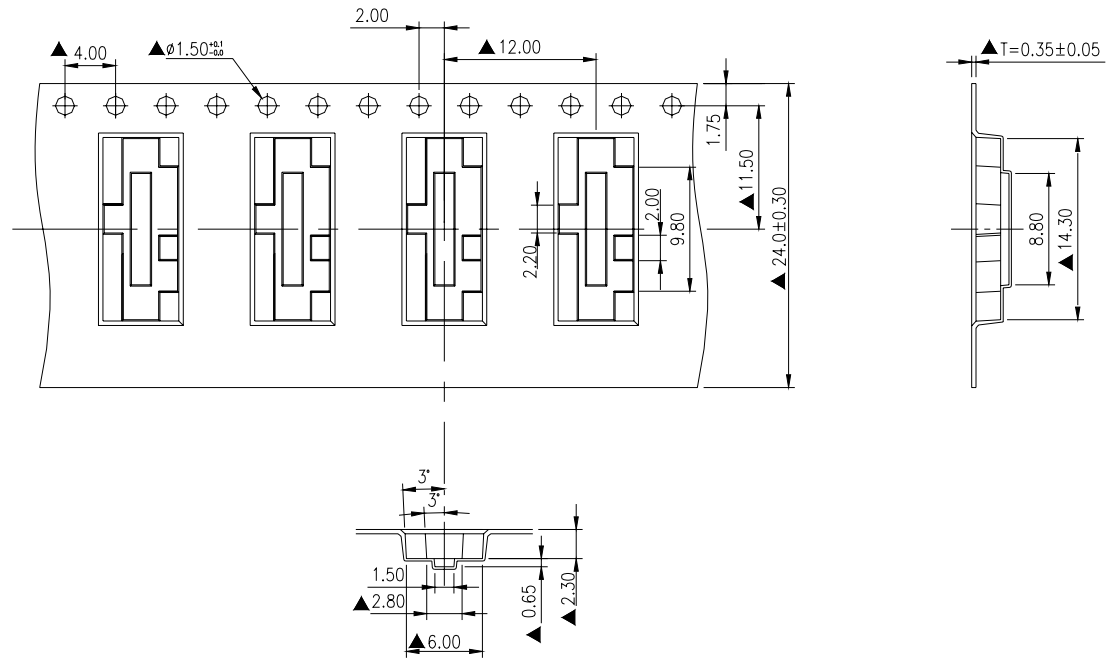
△ Any flux enters the switch may fail the conductivity.

△Reflow Temperature Profile: (reference)



PACKING

SE14 CARRIER



****GENERAL TOLERANCES MAX: ±0.1mm.****

Part Number	Number Per Tube	Number Per Reel
SE14	-	1,800