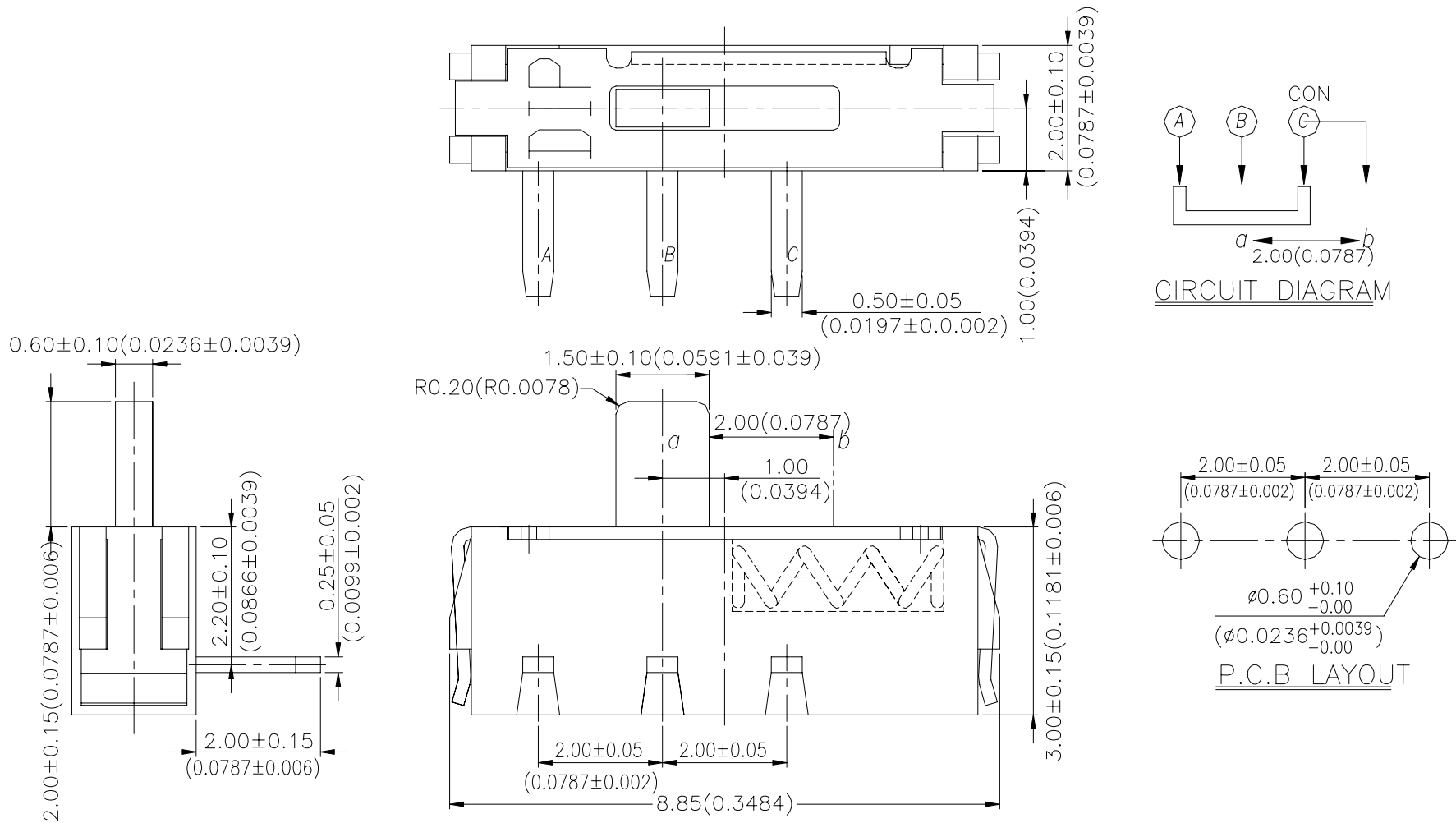


SS SERIES



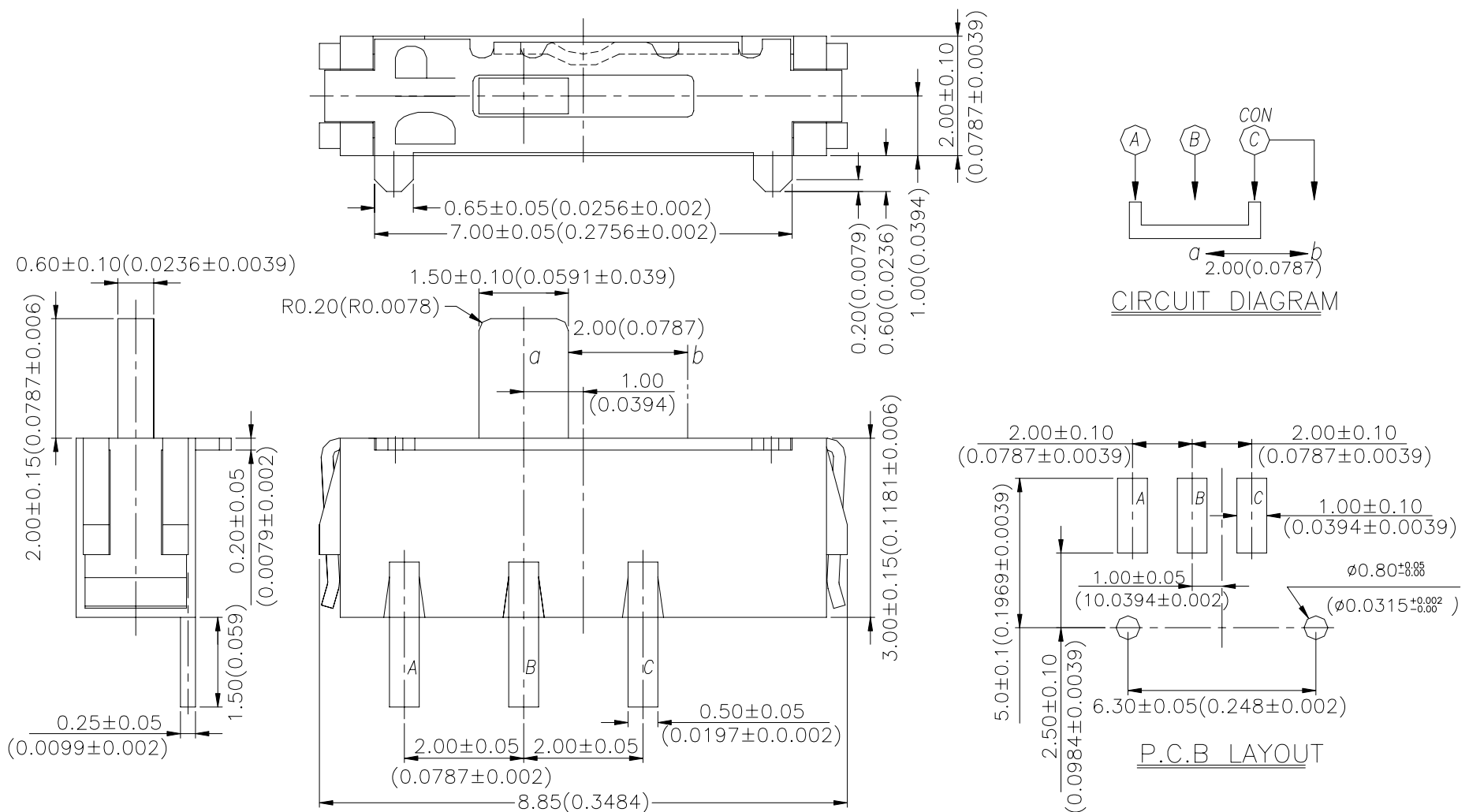
**DIMENSION**

**SS3-HS**



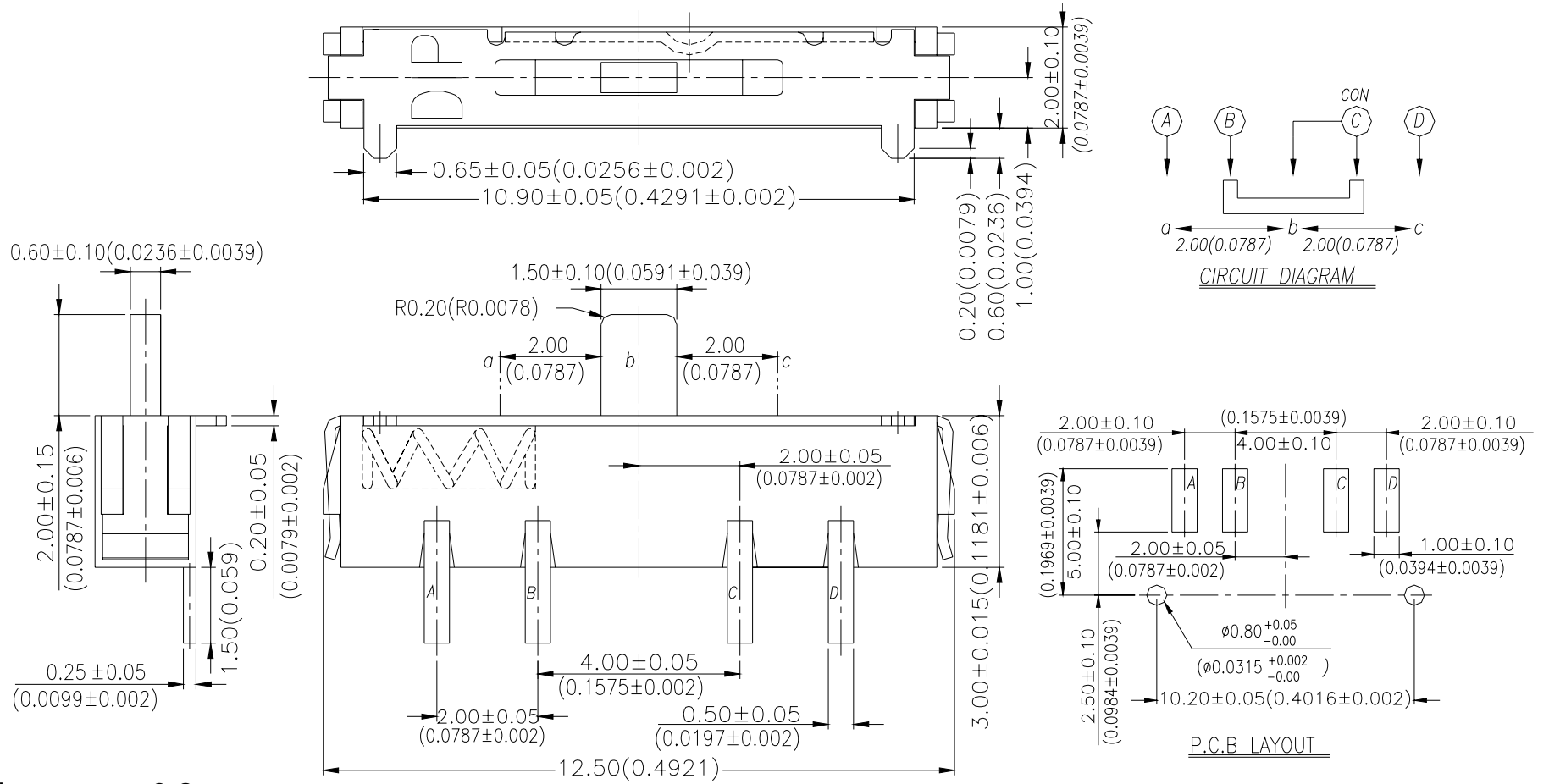
General Tolerance :  $\pm 0.2\text{mm}$

**SS3-CM**



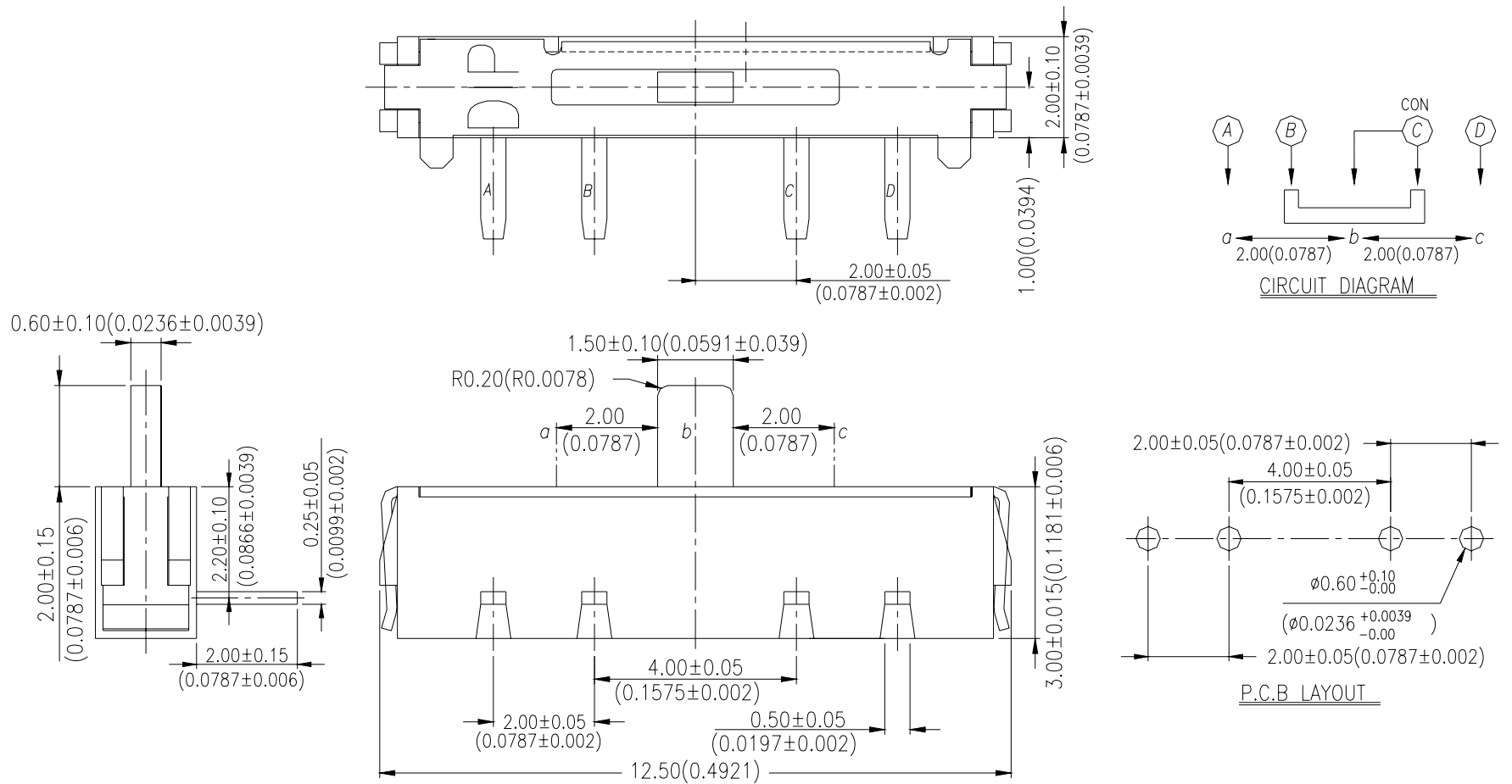
General Tolerance :  $\pm 0.2\text{mm}$

**SS4-CMS**



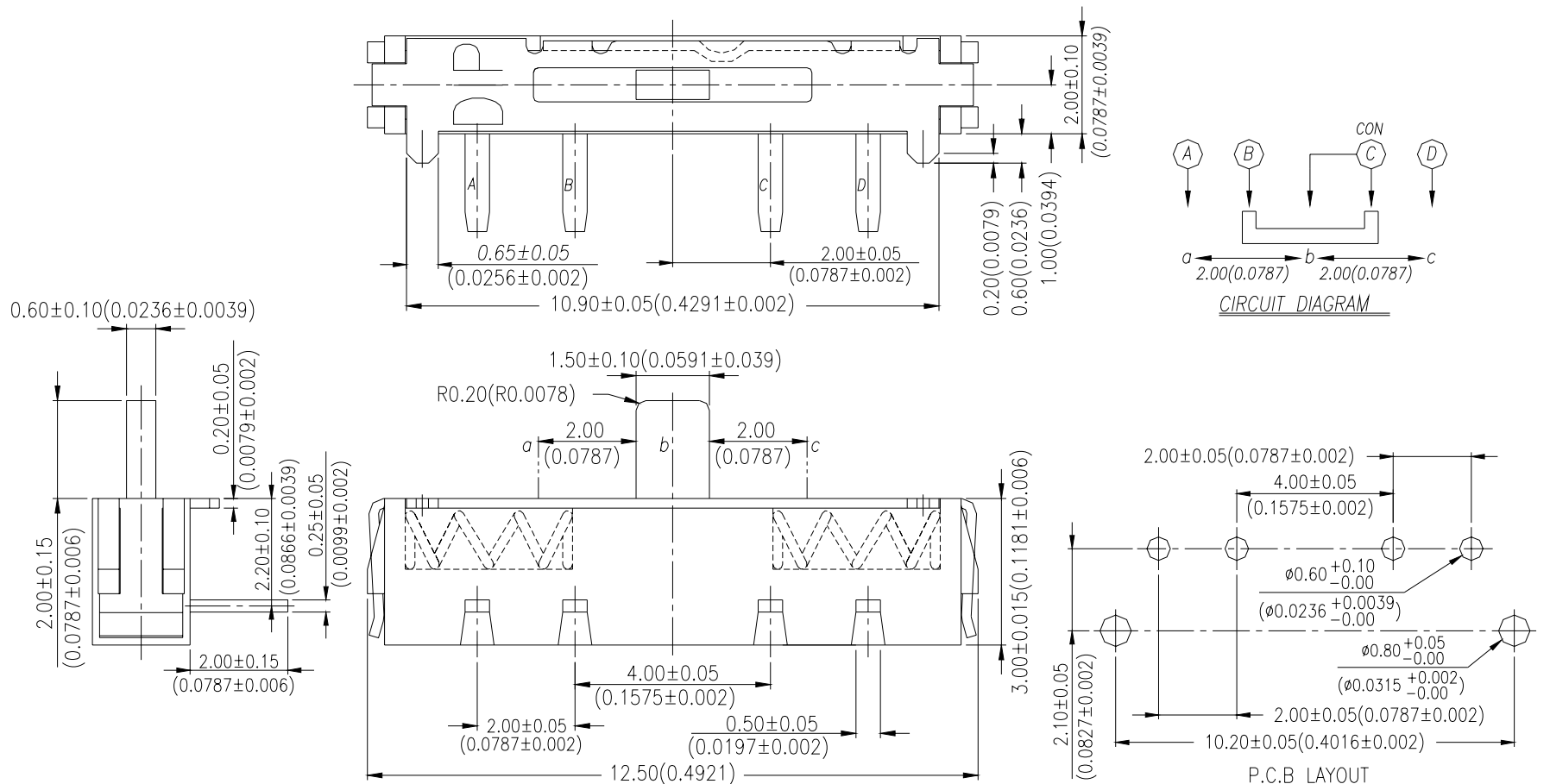
General Tolerance :  $\pm 0.2\text{mm}$

**SS4-H**



General Tolerance :  $\pm 0.2\text{mm}$

**SS4-CHS2**



General Tolerance :  $\pm 0.2\text{mm}$

# HOW TO ORDER

SS □ □ □ - □ □ □ □ □ □ □ □ □ - □ - □

**Package Style :**

- = Bag
- T/R = Tape & Reel
- B = Tube<Only for Through Hole>

**Soldering :**

- V = Lead Free Solderable
- Q= Halogen Free

**Operation Force :**

- = 350g <3.43N>
- F = 150g <1.47N>

**L = Long Terminals**

- ① Terminals Size 3.2mm Of Slide Operation
- ② Terminals Size 2.7mm Of Vertical Actuation

**Non spring type only :**

- = Actuator in Left Side
- C = Actuator in Right Side

□ = Without Recoil

- S = Single-Side Recoil
- S2 = Double-Side Recoil<Only for SS4>

**Terminal Type :**

- H = Through Hole
- M = SMT

□ = Cover Without Post

- C = Cover With Post(Non Vertical Actuation Type only)

**P = Vertical Actuation**

- = 3 = Side Actuation
- 4 = Horizontal Actuation

**N = For Single-Single-side Recoil Type**

**Poles-Positions :**

- 3 = 1P2T
- 4 = 1P3T

## SPECIFICATION

### △MECHANICAL

Mechanical Life: 10,000 cycles

Operation Force: 350gf max  
100gf min

Stroke : 2mm

Operation Temp: -20°C to +70°C

Storage Temp: -40°C to +85°C

### △ELECTRICAL

Electrical Life: 10,000 cycles

Non-switching Rating: 100mA, 50VDC

Switching Rating: 25mA, 24 VDC

Contact Resistance: 100mΩ max.

Insulation Resistance: 100MΩ min. (500VDC)

Dielectric Strength: 500VAC/ 1minute

Circuit: 1P2T, 1P3T

## MATERIAL

△COVER: Stainless steel

△BASE: UL 94V-0 High-Temp thermoplastic

Color: Black

△ACTUATOR: UL 94V-0 High-Temp thermoplastic

Color: Black

△CONTACT: Alloy copper

△TERMINAL: Brass

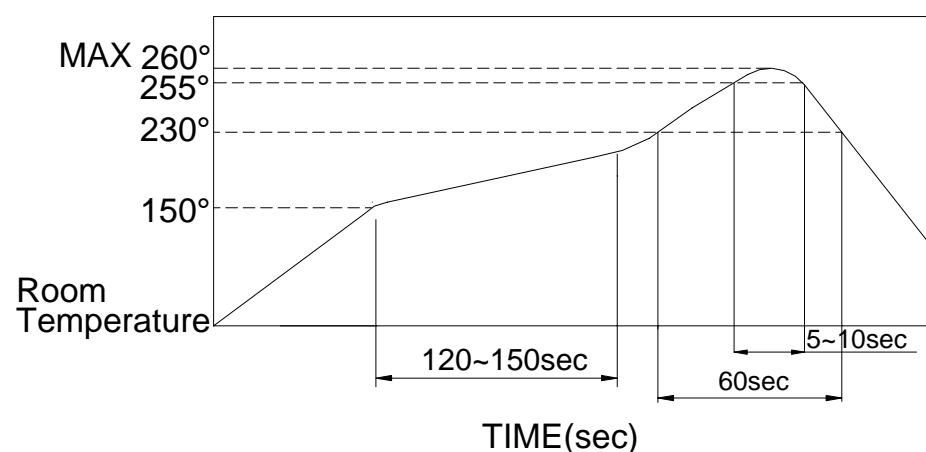
## SOLDERING PROCESS

△ HAND SOLDERING : Use a soldering iron of 30 watts, controlled at 350°C approximately 5 seconds while applying.

△ WAVE SOLDERING : Recommended solder temperature at 500°F(260°C)max. 5 seconds for through Hole type.

△ REFLOW SOLDERING : When applying reflow soldering, the peak temperature or the reflow oven should be set to 260°C max.

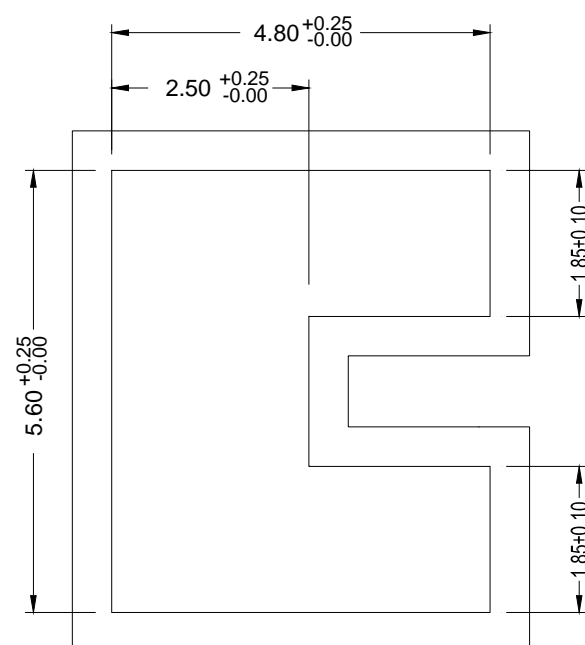
△ Temperature Profile :



## PACKING

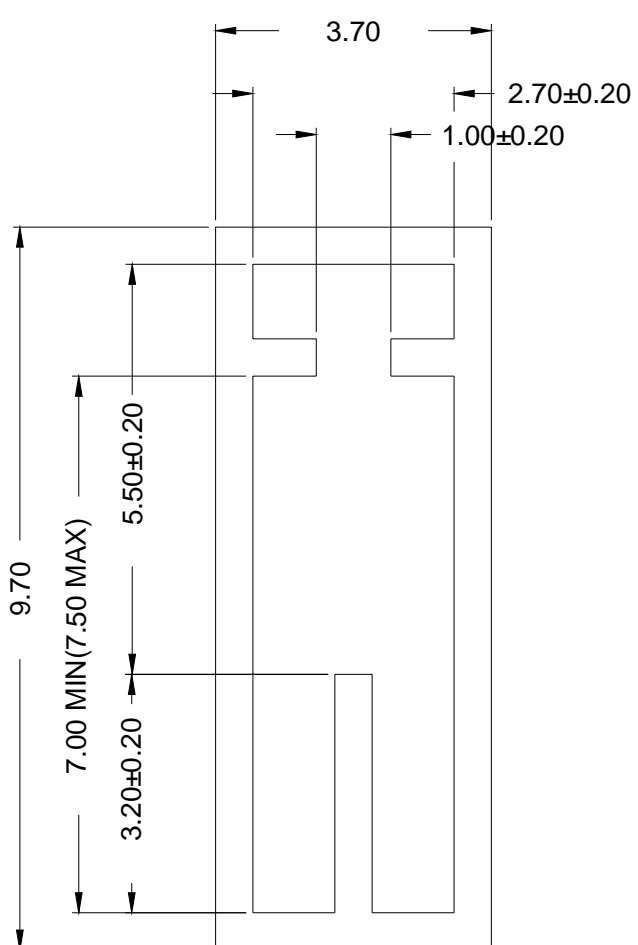
Part Number	Number Per Reel	Number Per Tube
SS3-H-B		53
SS3-HS-B		53
SS3-HSC-B		53
SS4-H-B		38
SS4-HS-B		38
SS4-HS2-B		38
SS3-CM-T/R	1900	
SS3-CMS-T/R	1900	
SS3-M-T/R	1900	
SS4-CM-T/R	1900	
SS4-CMS-T/R	1900	
SS4-CMS2-T/R	1900	
SS4-M-T/R	1900	
SS4-MS-T/R	1900	
SS4-CMS2-T/R	1900	
SS3-CMSC-T/R	1900	
SS3-MS-C-T/R	1900	

SS4、3 TUBE

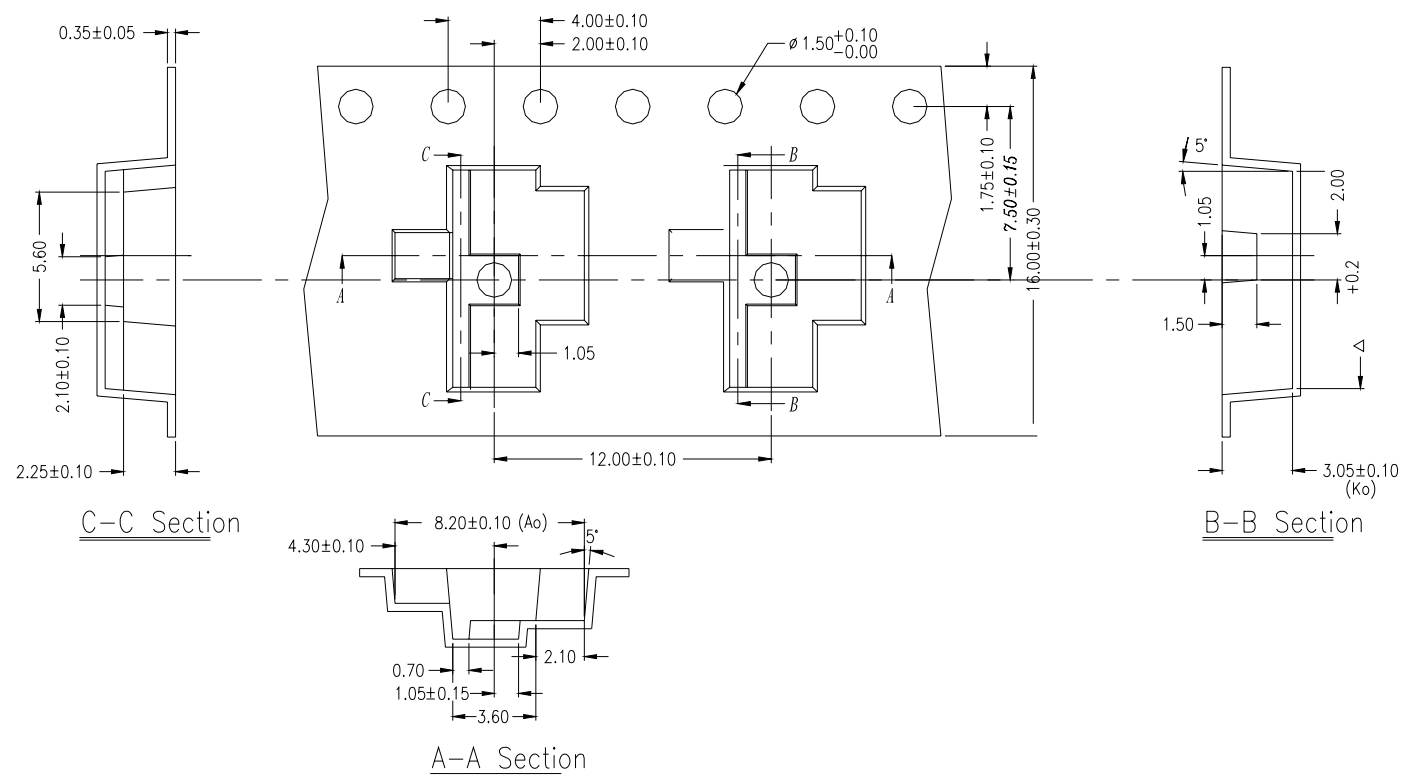


General Tolerance :  $\pm 0.2\text{mm}$

SS3、4P-H

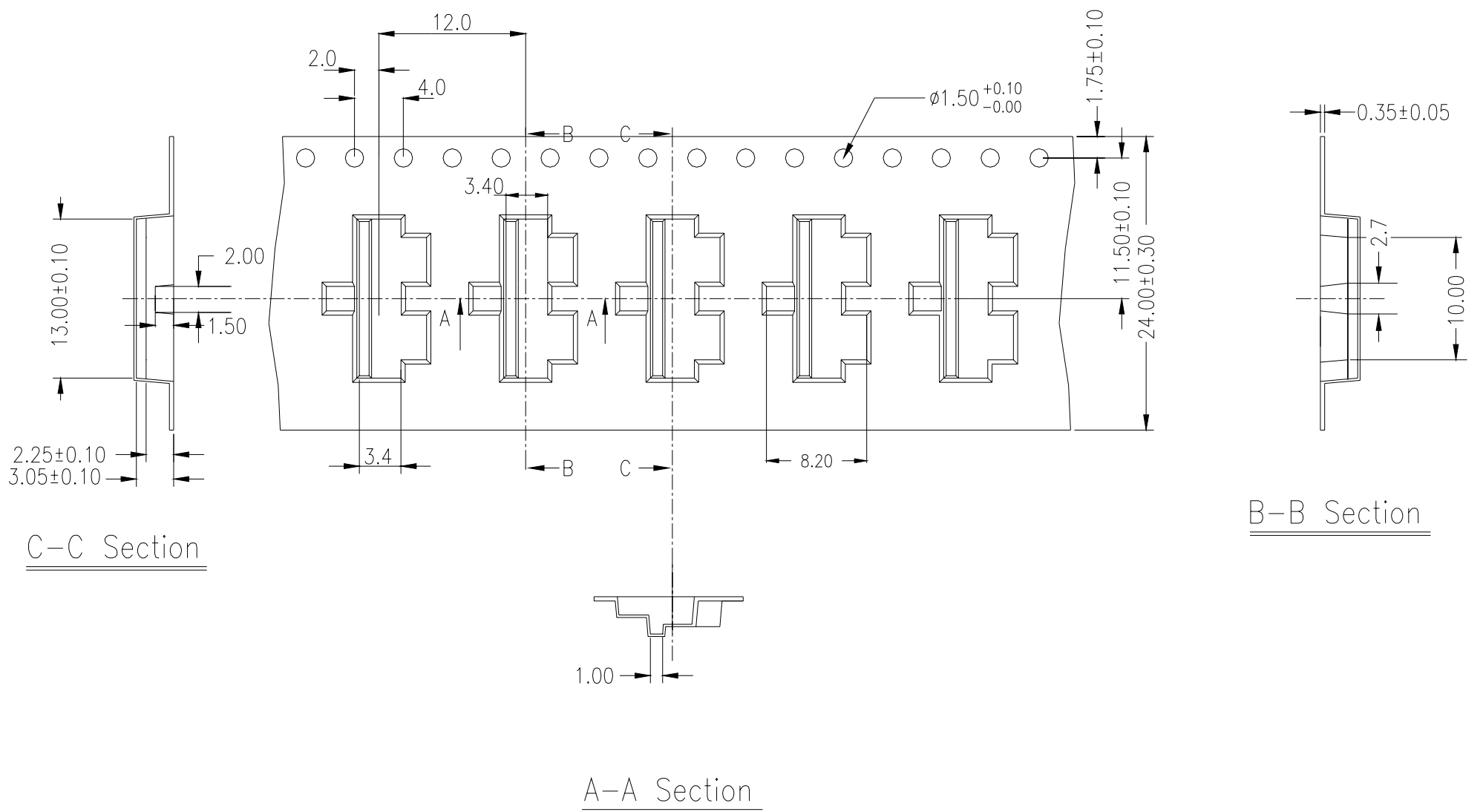


**SS3 REEL**



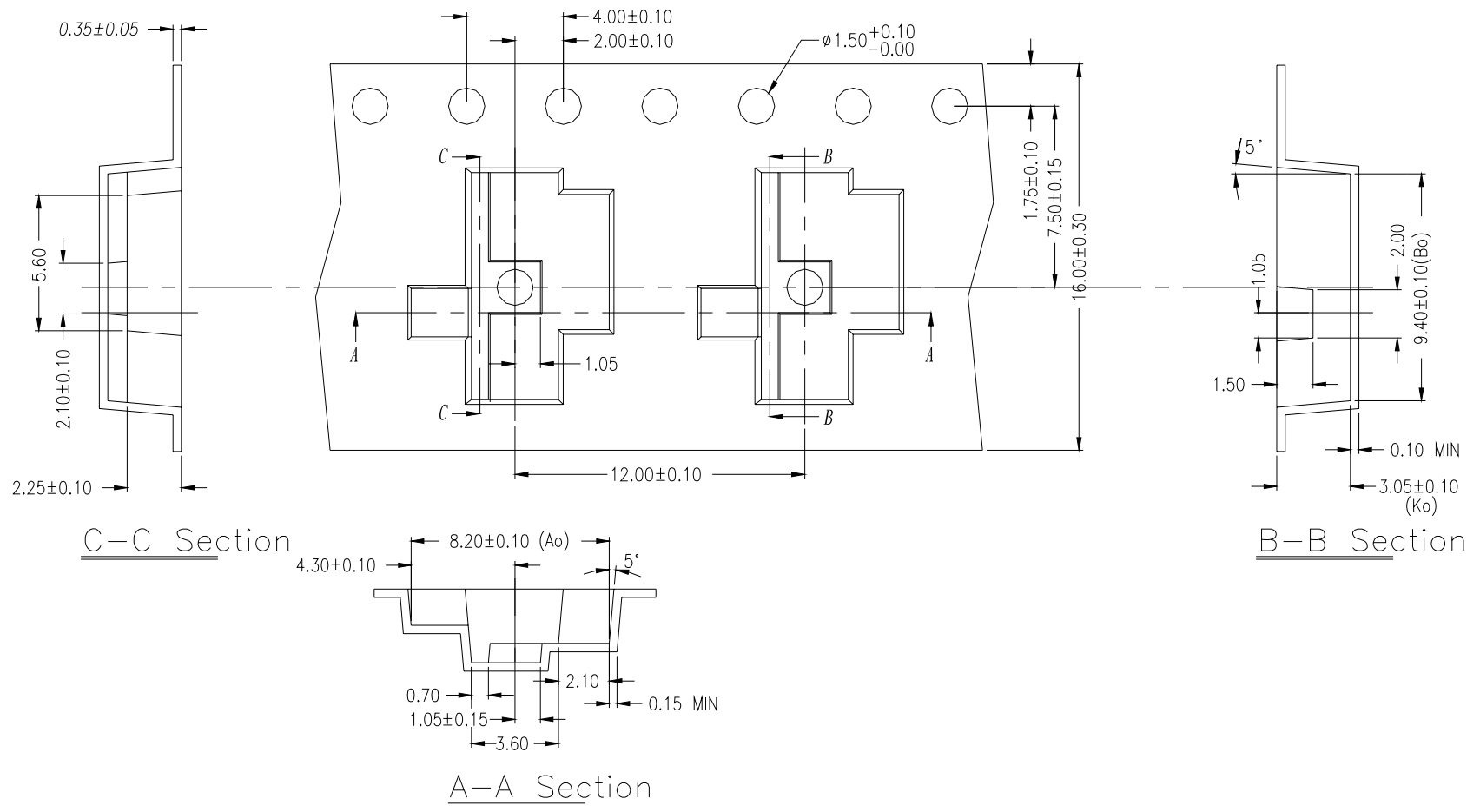
General Tolerance : ±0.1mm

**SS4 REEL**



General Tolerance : ±0.1mm

SSC-M REEL



General Tolerance : ±0.1mm