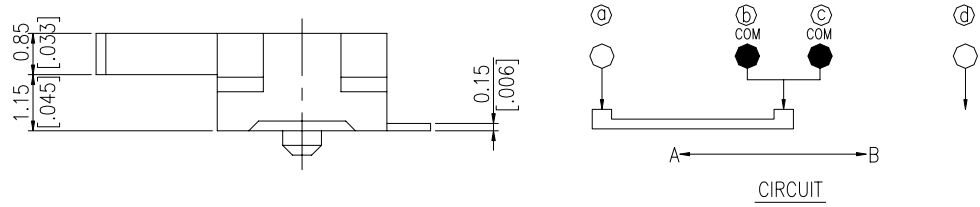
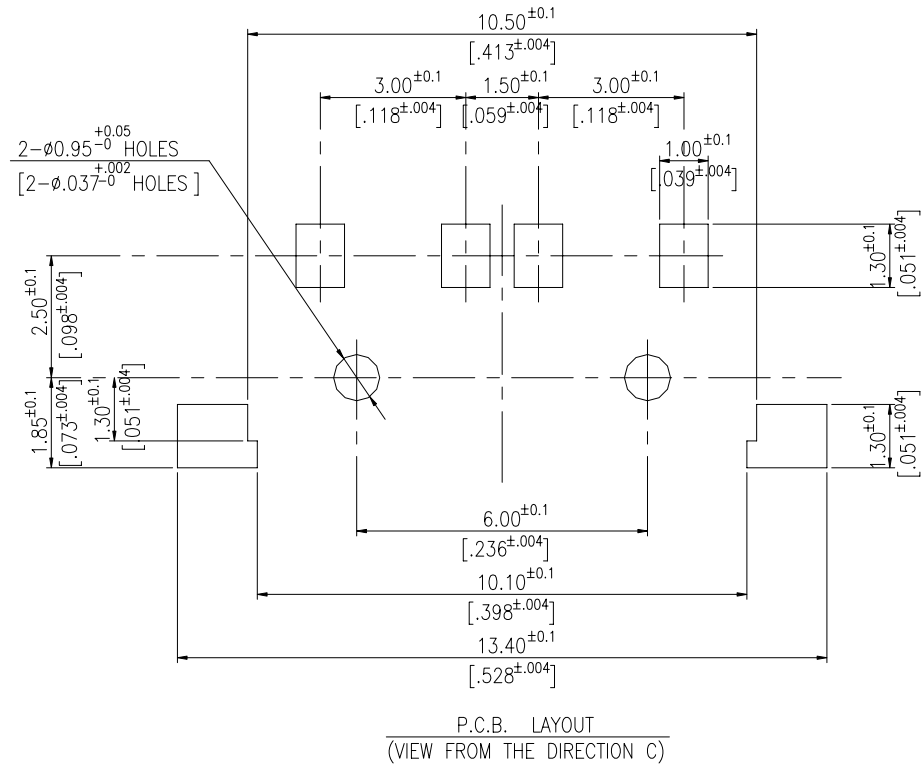
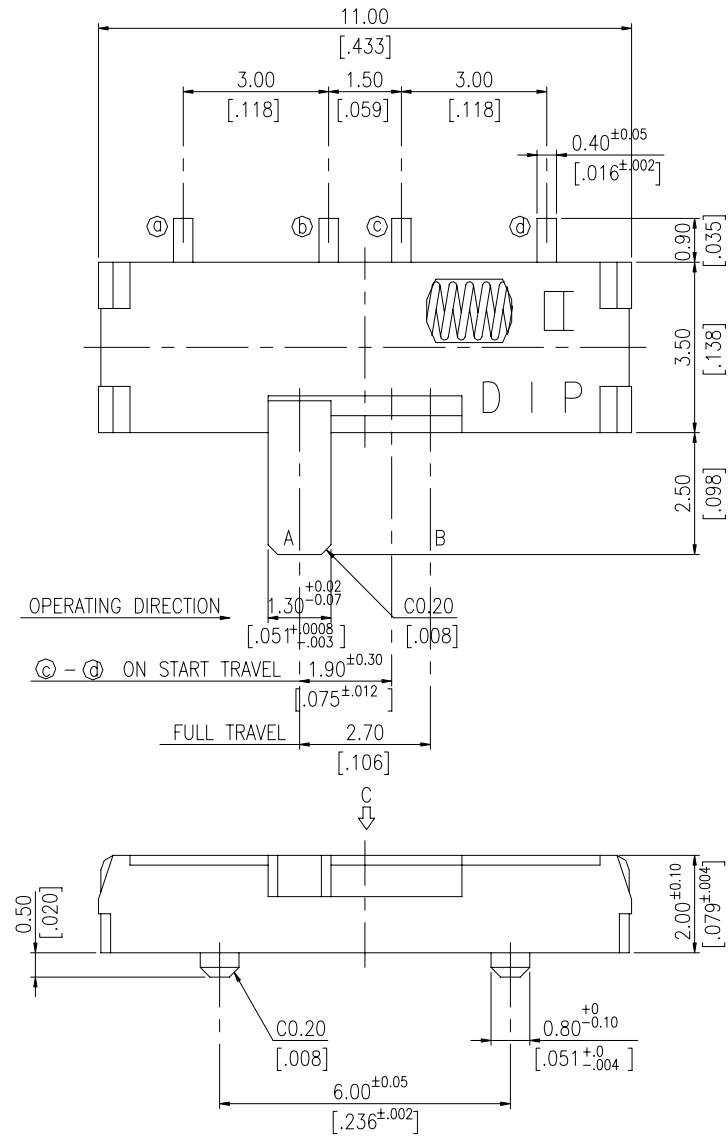


SSS SERIES



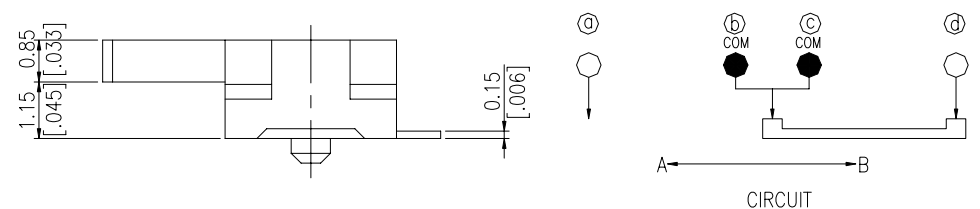
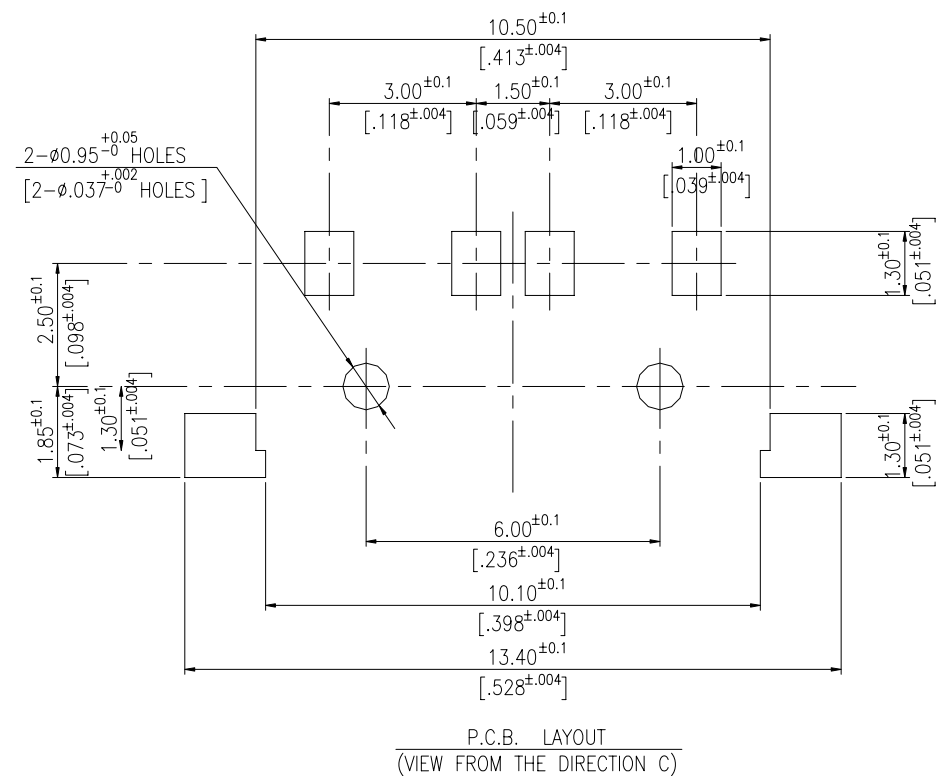
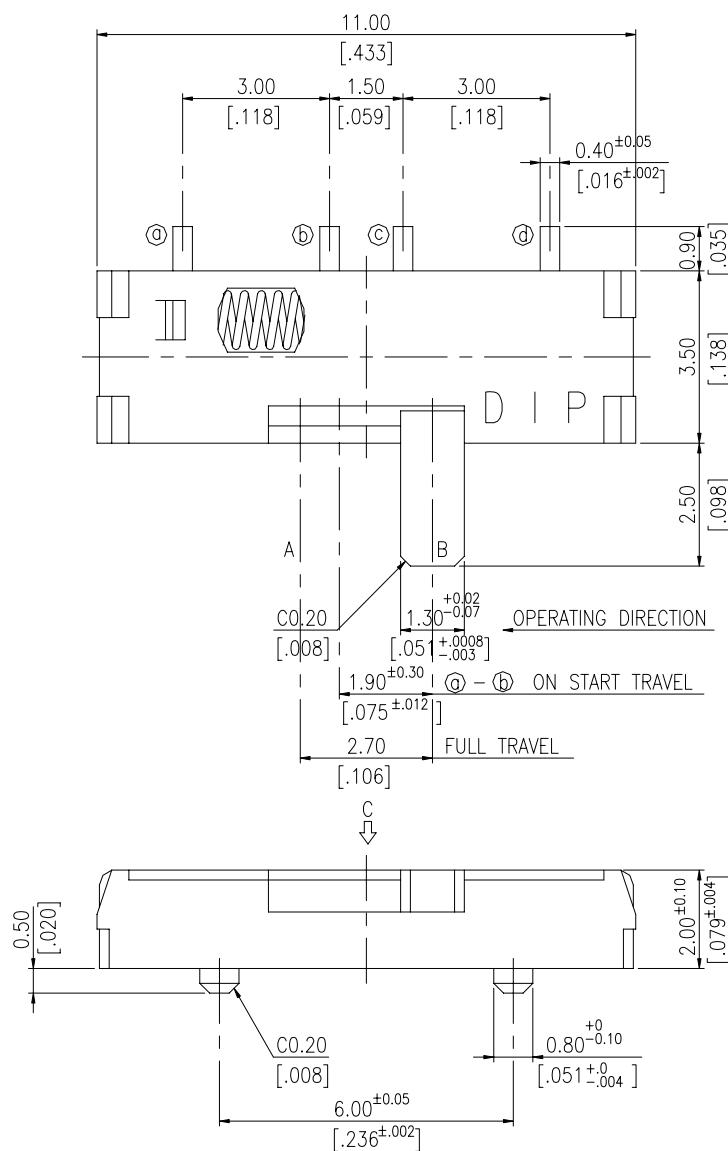
DIMENSION

SSS12L



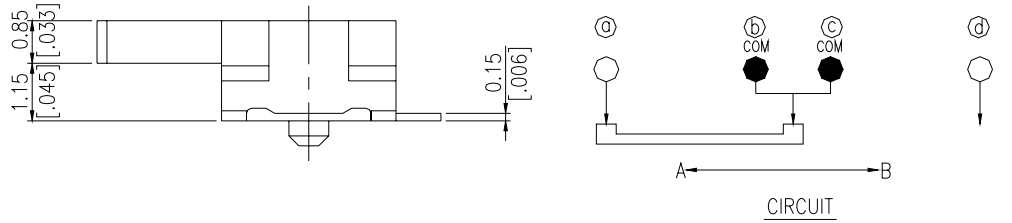
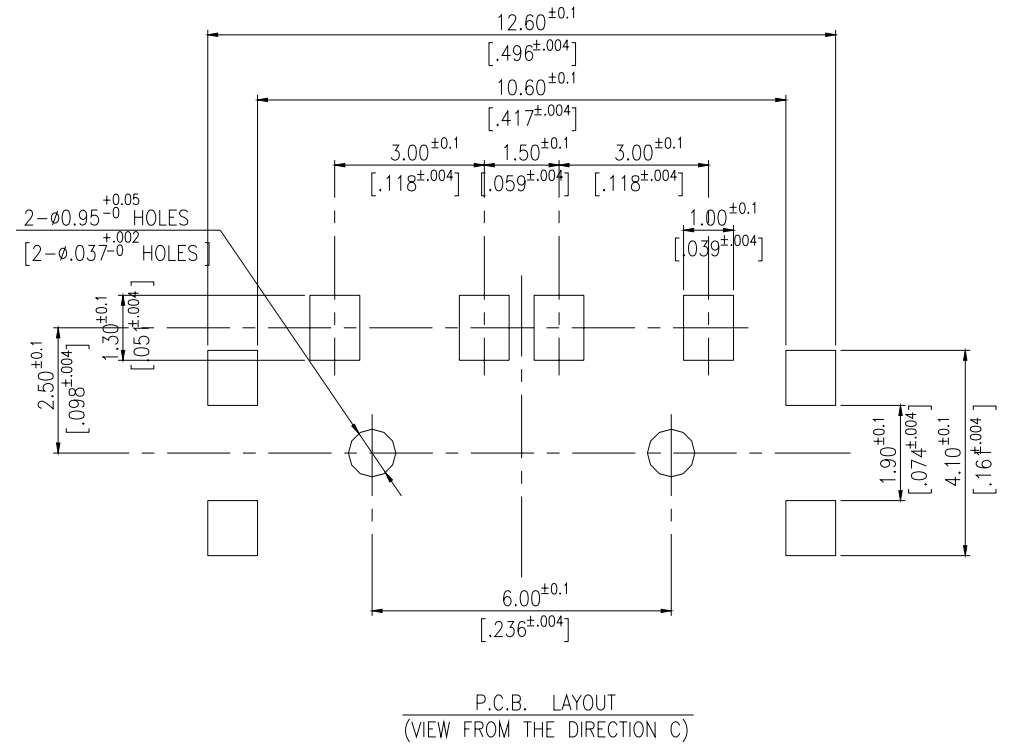
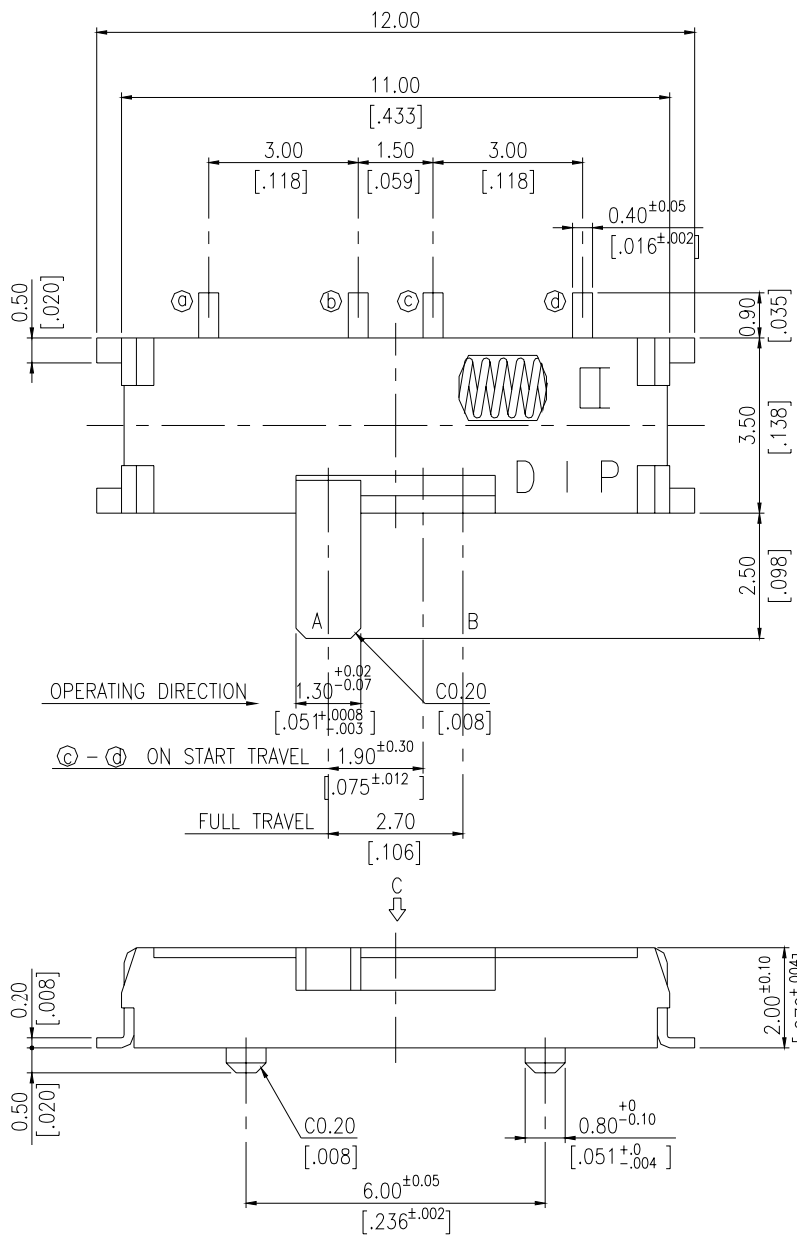
General Tolerance : ±0.2mm

SSS12R



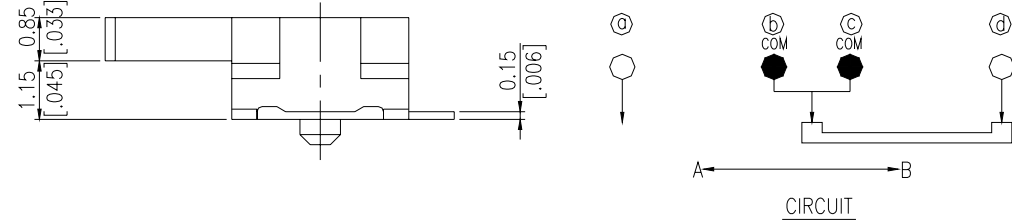
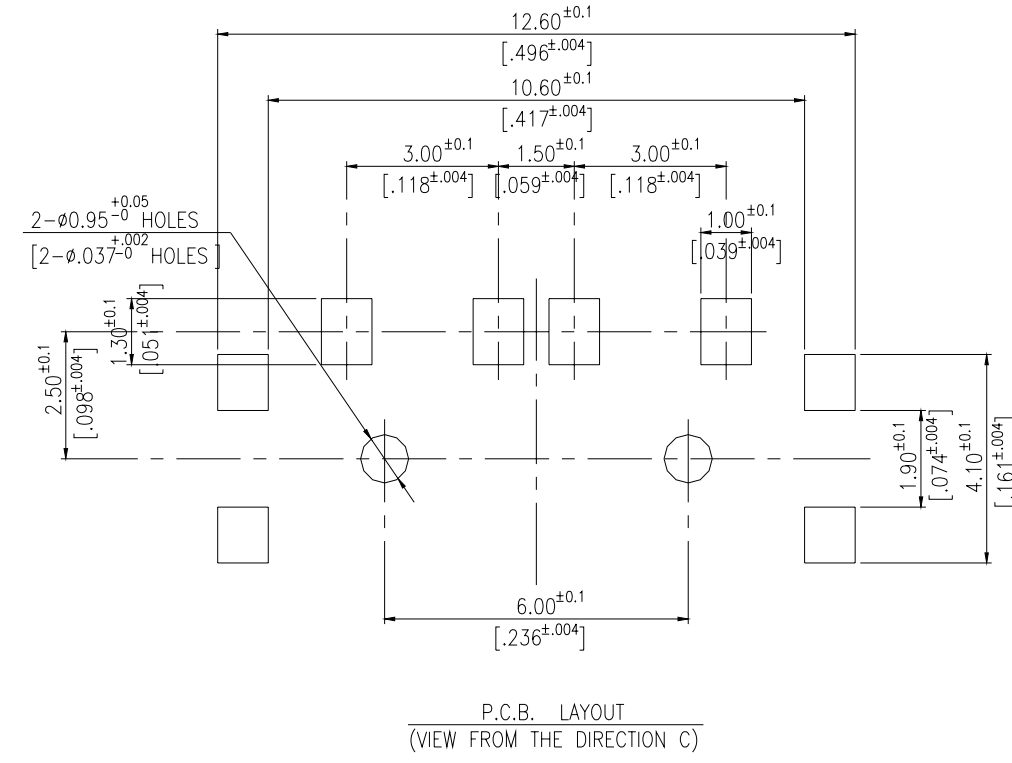
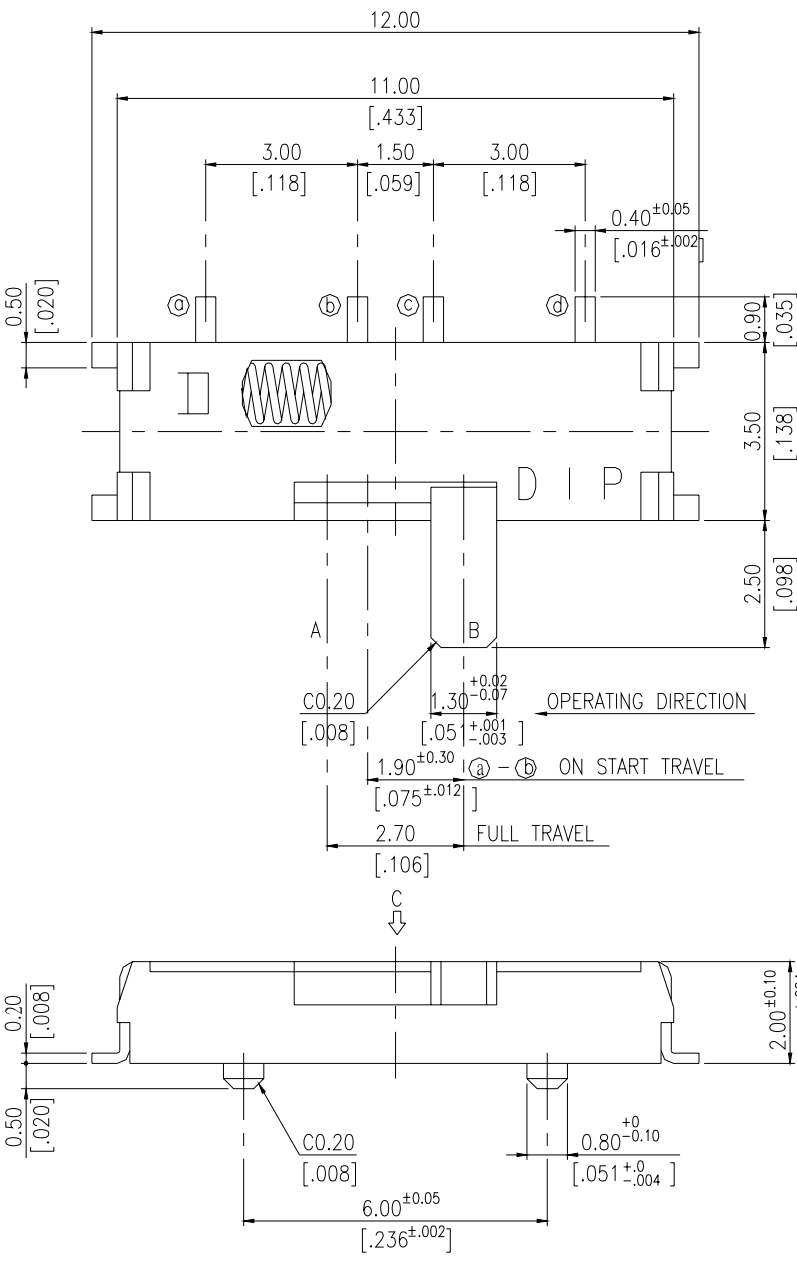
General Tolerance : ±0.2mm

SSS12LG



General Tolerance : ±0.2mm

SSS12RG



General Tolerance : ±0.2mm

HOW TO ORDER

SSS - 12 □ - □ - □

Package :
T/R = Tape & Reel

Soldering :
V = Lead Free Solderable
Q= Halogen Free
L = Actuator in Left Side
R = Actuator in Right Side

Poles-Positions
12 = 1P2T

Spring Return Slide Switch

SPECIFICATION

△MECHANICAL

Operation Force : 180 ± 70 gf
Operation Temperature Range : -10°C to $+60^{\circ}\text{C}$
Storage Temperature Range : -20°C to $+75^{\circ}\text{C}$
Stroke : 2.7mm

△ELECTRICAL

Electrical Life : 10,000 cycles
Rating : 0.3A, 4V DC
Contact Resistance : $70\text{m}\Omega$ max.
Insulation Resistance : $100\text{M}\Omega$ min. at 100V DC
Dielectric Strength : 100V AC/1 minute
Circuit : 1P2T

MATERIAL

△STEM : Nylon UL94V-0 High-Temp Thermoplastic
Color : Black

△COVER : Nickel silver

△SPRING : Stainless silver

△CONTACT : Alloy Copper, Gold Plated

△BASE : LCP High-Temp Thermoplastic
Color : Black

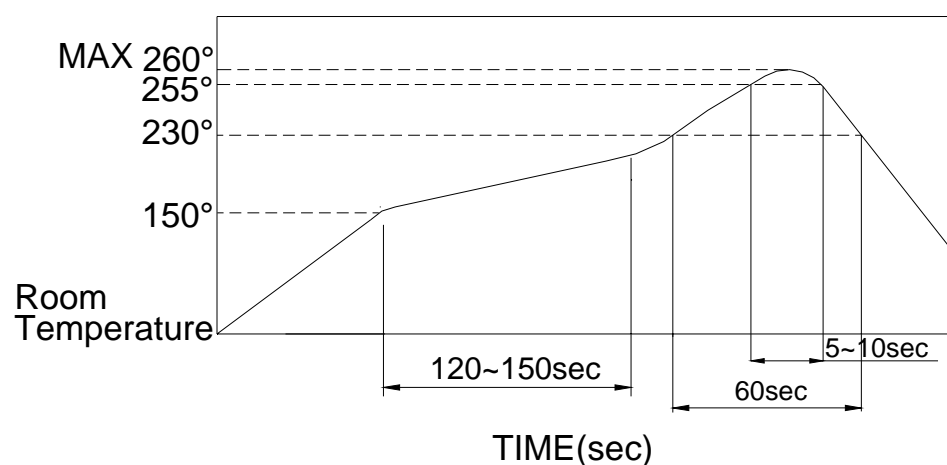
△TERMINAL : Phosphor Bronze, with Silver plated

SOLDERING PROCESS

△HAND SOLDERING : Use a soldering iron of 30 watts,
Controlled at 350°C approximately 5 seconds while
applying solder.

△REFLOW SOLDERING : When applying reflow soldering,
the peak temperature of the reflow oven should be set
to 260°C max.

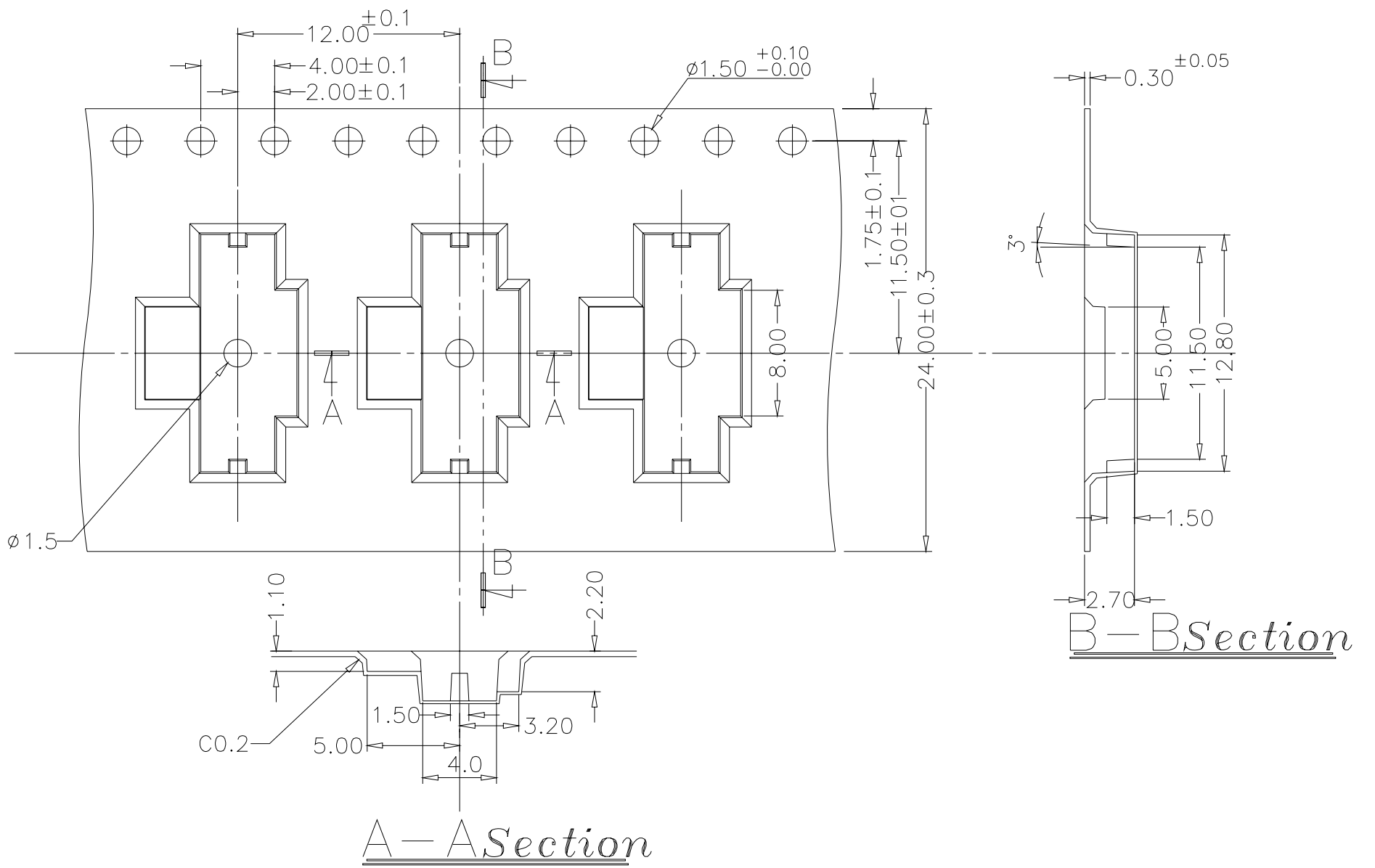
△Temperature Profile :



PACKING

REEL

| Part Number | Number Per Tube | Number Per Reel |
|-------------|-----------------|-----------------|
| SSS-12R(G) | - | 2000 |
| SSS-12L(G) | - | 2000 |



General Tolerance : ± 0.1 mm