

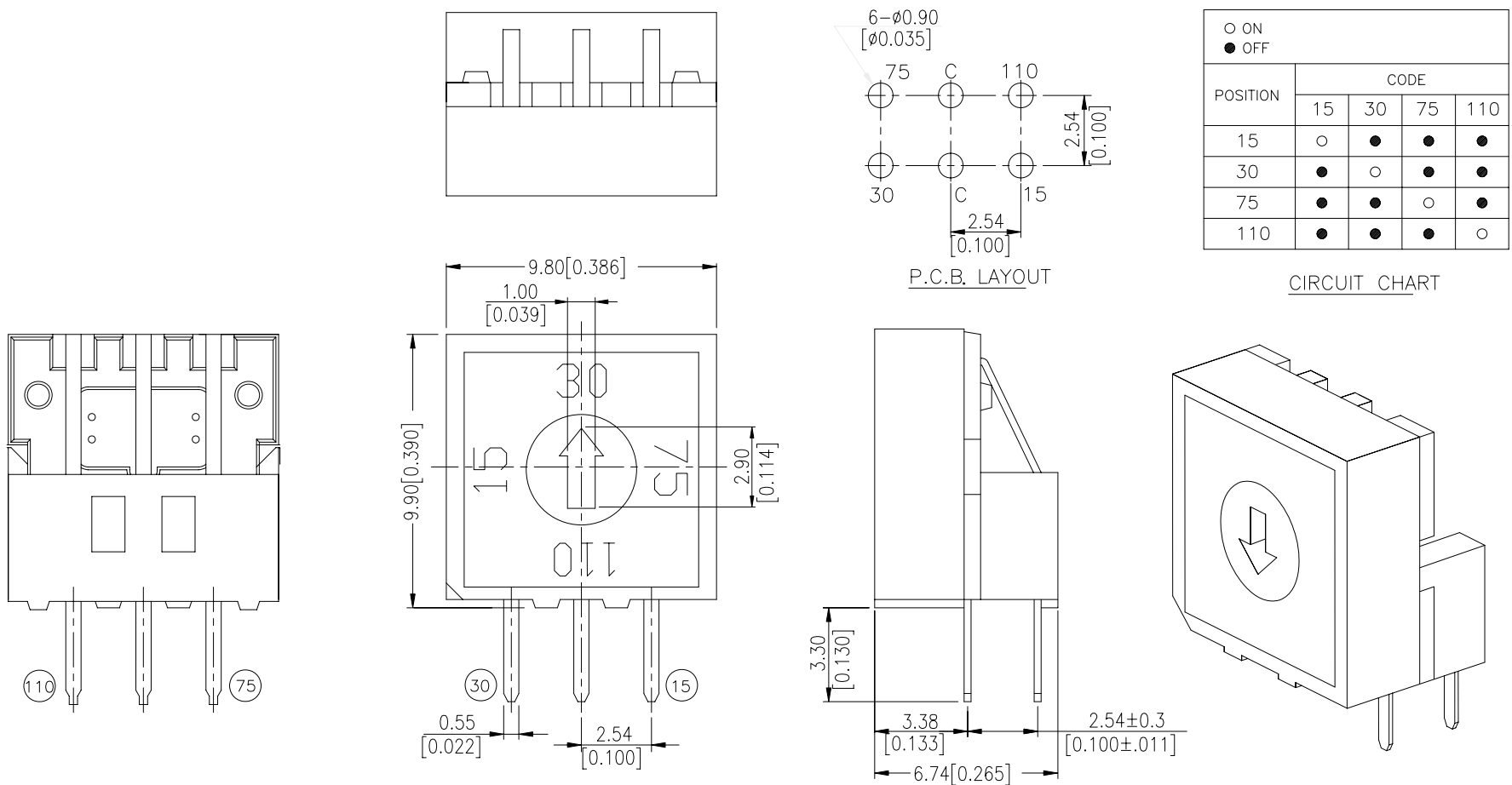


SELECTOR SWITCH SERIES



DIMENSIONS

SV3A-4R-V



HOW TO ORDER

S V 3 A - 4 R - V - □

- Package Style:
B = Tube Package
- V = Lead Free
- 4 = Number Of Steps
4 = 4 Steps .
- A = Terminal Plating
A = Gold Plating Over Nickle
- 3 = Number of Terminals
3=3x3
- V = Termination Type:
V = Right Angle
- S = Selector Type

SPECIFICATIONS

△MECHANICAL

Mechanical Life: 200mΩ max. 20,000 steps

Operating Force: 200gf-cm max.

△ENVIRONMENTAL

Operating Temperature: -25°C to +80°C

Storage Temperature: -40°C to +85°C

△ELECTRICAL

Electrical Life: 200mΩ max. 20,000 steps

Non-Switching Rating: 100mA, 50VDC

Switching Rating: 24VDC, 25mA

Contact Resistance: (a) 100mΩ max. (initial)

(b) 200mΩ (final – after test)

Insulation Resistance: 100MΩ min. at 250VDC

Voltage Proof: 250VAC for 1 minute

MATERIAL

△BASE & COVER: UL 94V-0 High-temp Thermoplastic

Color: White

△ACTUATOR: UL 94V-0 High-temp Thermoplastic

Color: White

△CONTACT: Alloy copper with gold plated over nickle

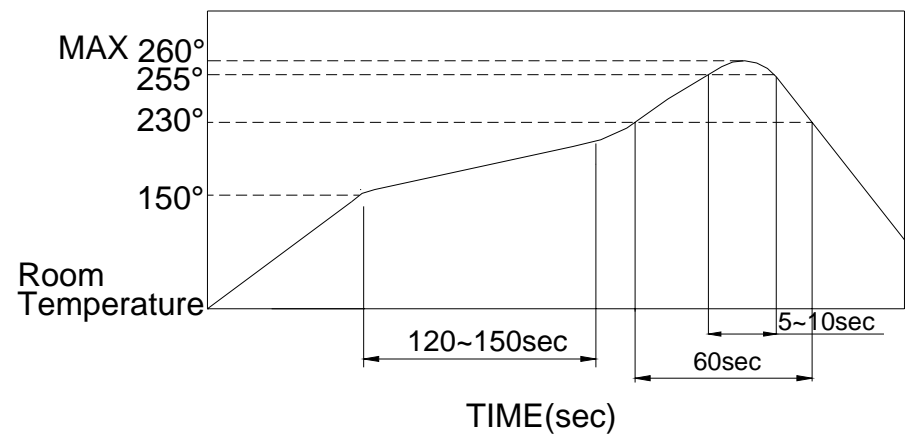
△TERMINAL: Brass with gold plated

SOLDERING PROCESS

△HAND SOLDERING : Use a soldering iron of 30 watts, controlled at (350°C) approximately max 5 seconds.

△WAVE SOLDERING: Recommended temperature at 500°F (260°C) max. 5 seconds. (For through hole type).

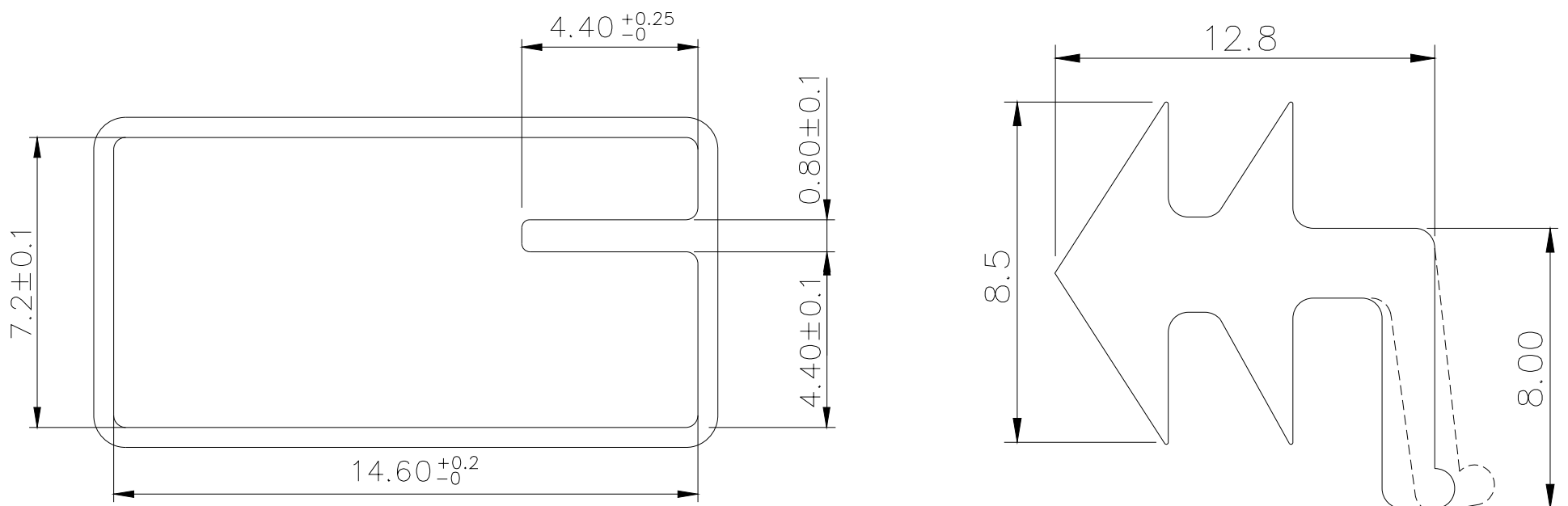
△REFLOW SOLDERING: When applying reflow soldering, the peak temperature of the reflow oven should be set to 260°C max.



PACKING

Part Number	Number Per Tube	Number Per Reel
SV3A-4R	80	

SV TUBE



General Tolerance : ±0.2mm