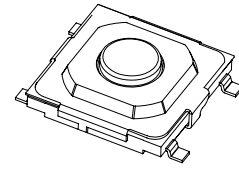
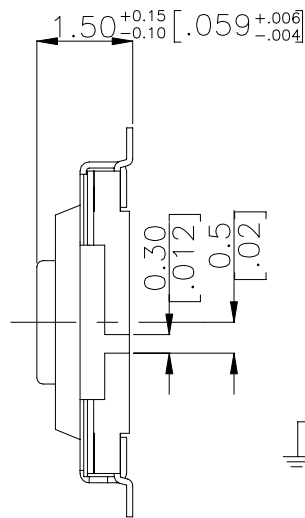
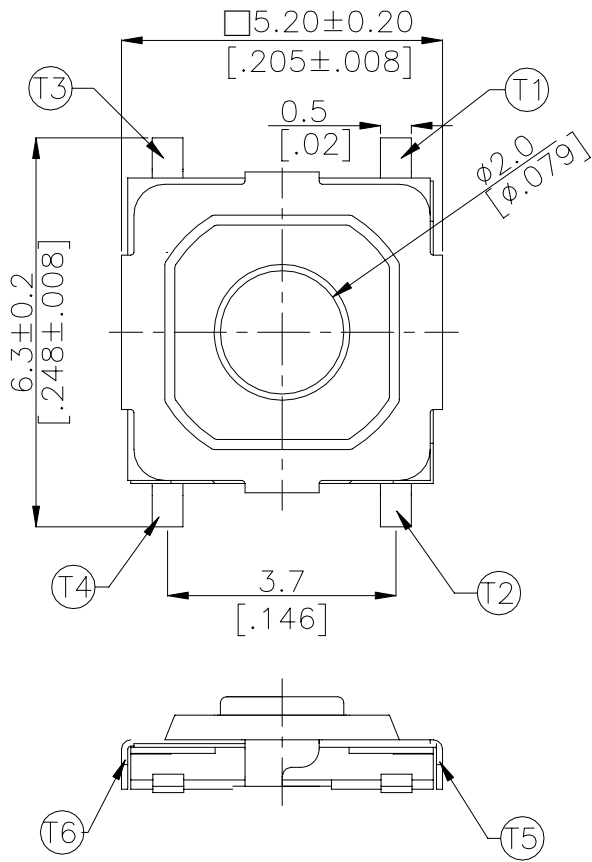
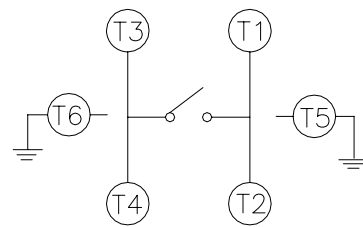


DIMENSIONS

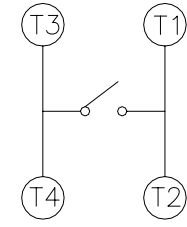
TMG-53



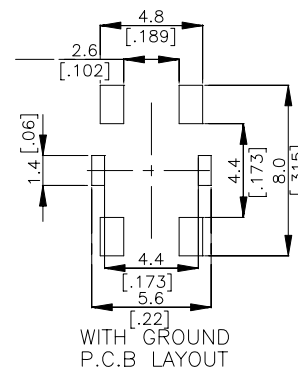
TMG-53*



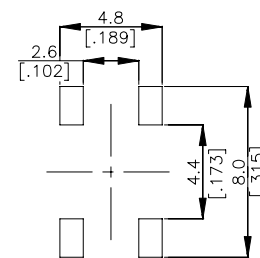
WITH GROUND
CIRCUIT DIAGRAM



WITHOUT GROUND
CIRCUIT DIAGRAM



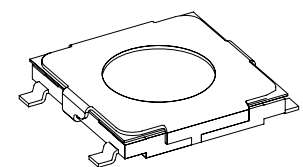
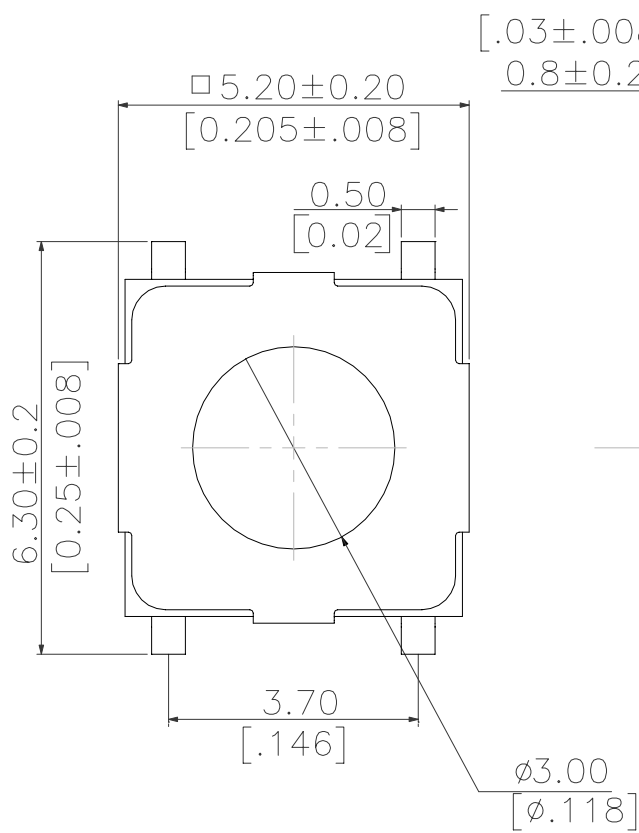
WITH GROUND
P.C.B. LAYOUT



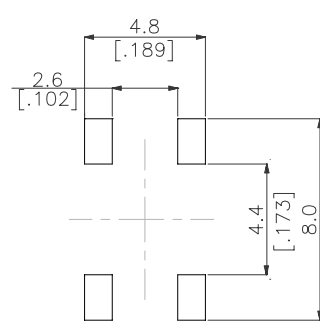
WITHOUT GROUND
P.C.B. LAYOUT

General Tolerance : ±0.2mm

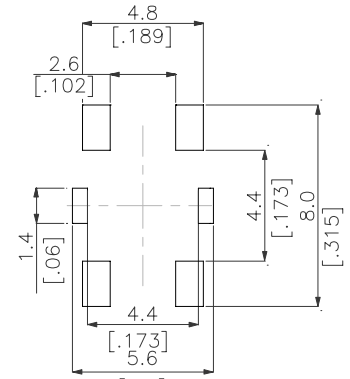
TMG-52



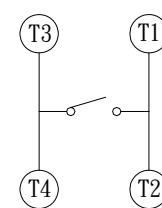
TMG-52*



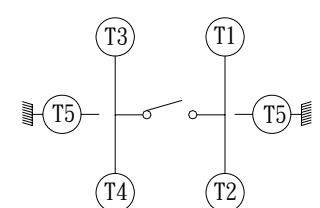
WITHOUT GROUND
P.C.B. LAYOUT



WITH GROUND
P.C.B. LAYOUT



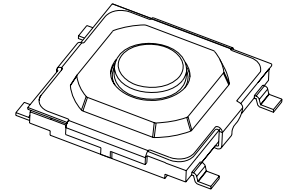
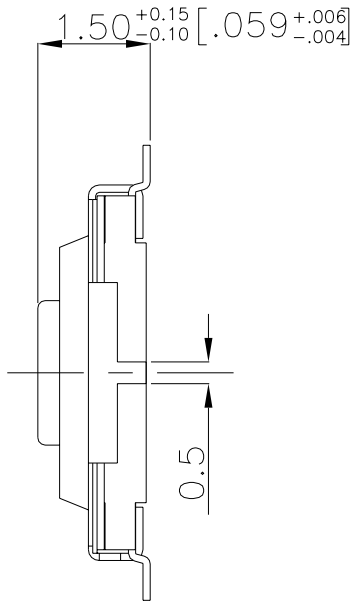
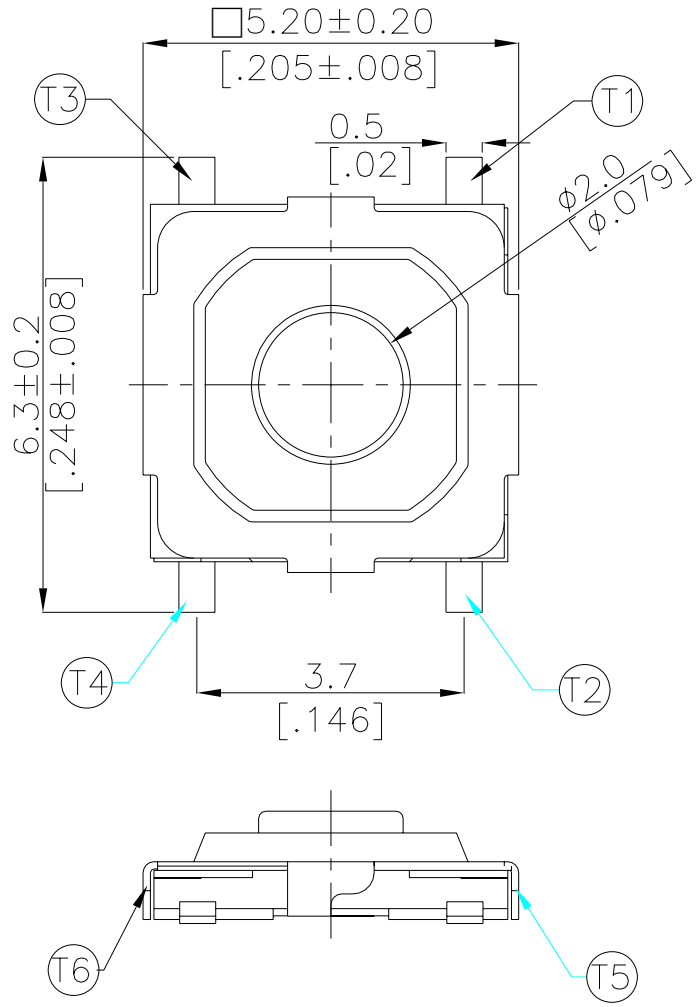
WITHOUT GROUND
CIRCUIT DIAGRAM



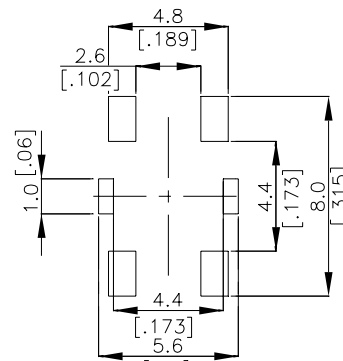
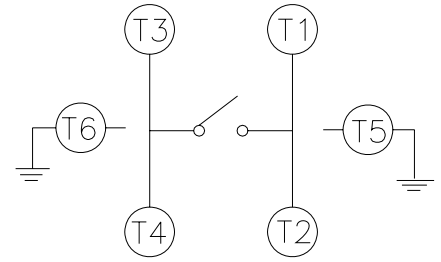
WITH GROUND
CIRCUIT DIAGRAM

General Tolerance : ±0.2mm

TME-53

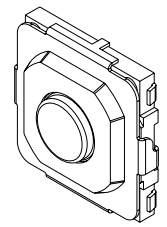
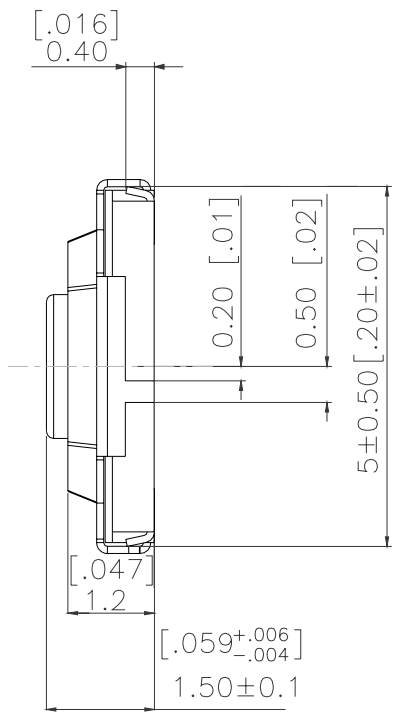
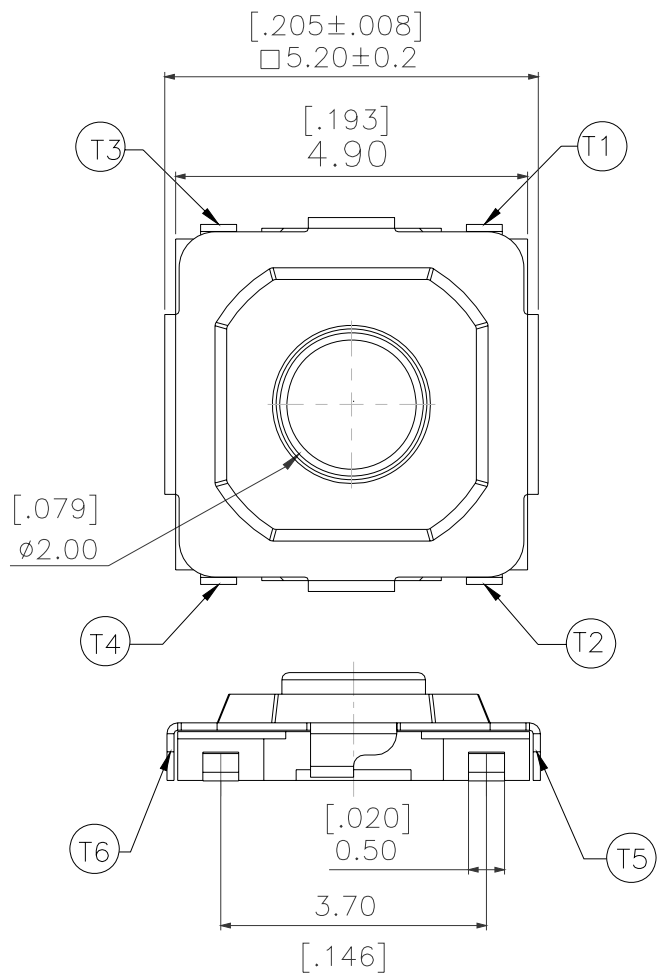


TME-53*

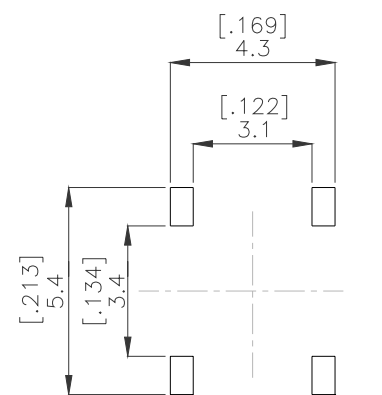
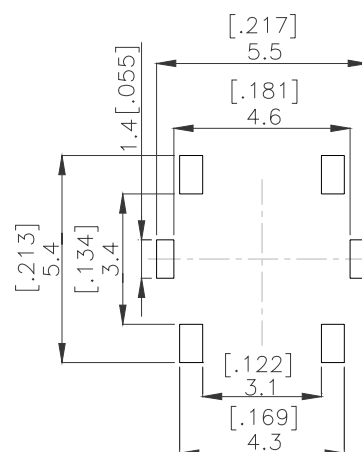
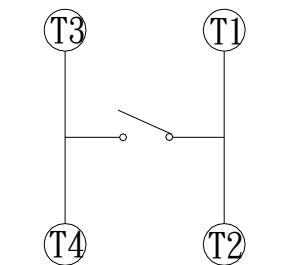
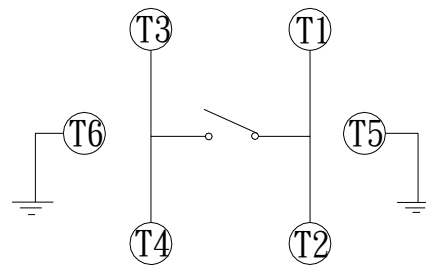


DIMENSIONS

TJG-53

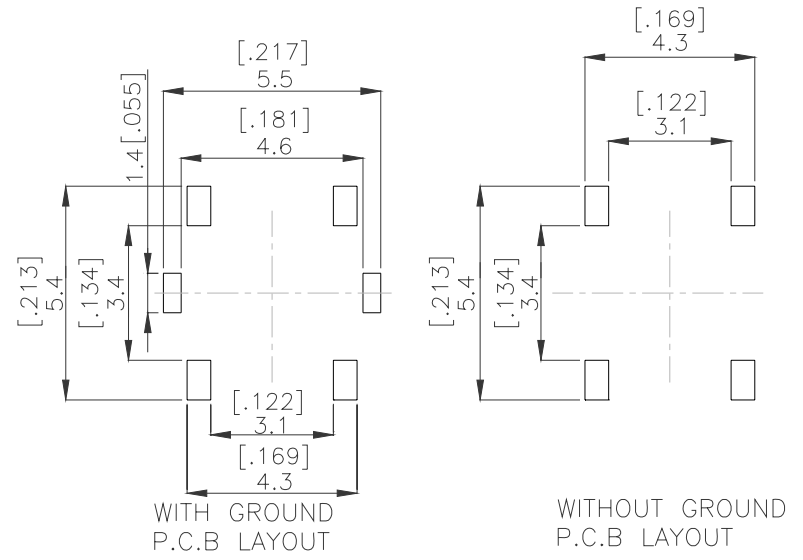
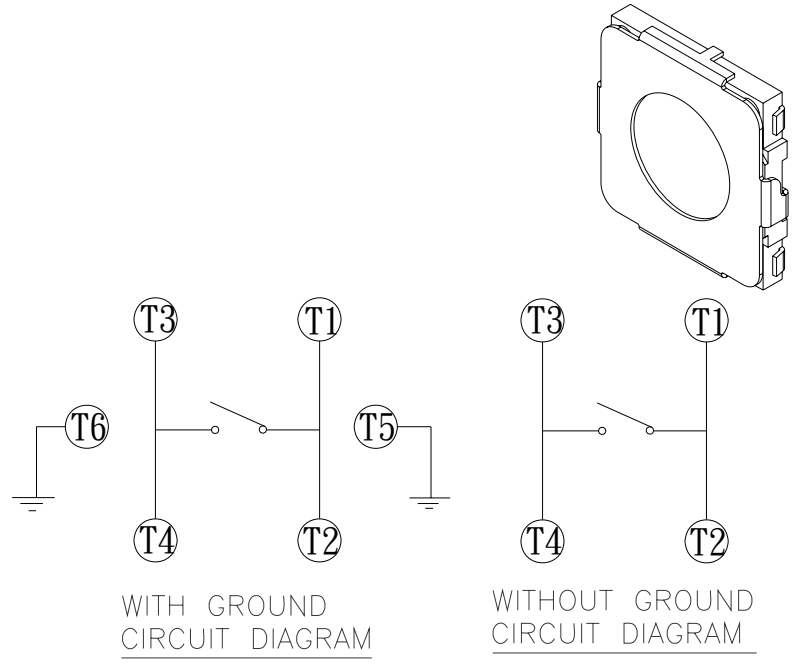
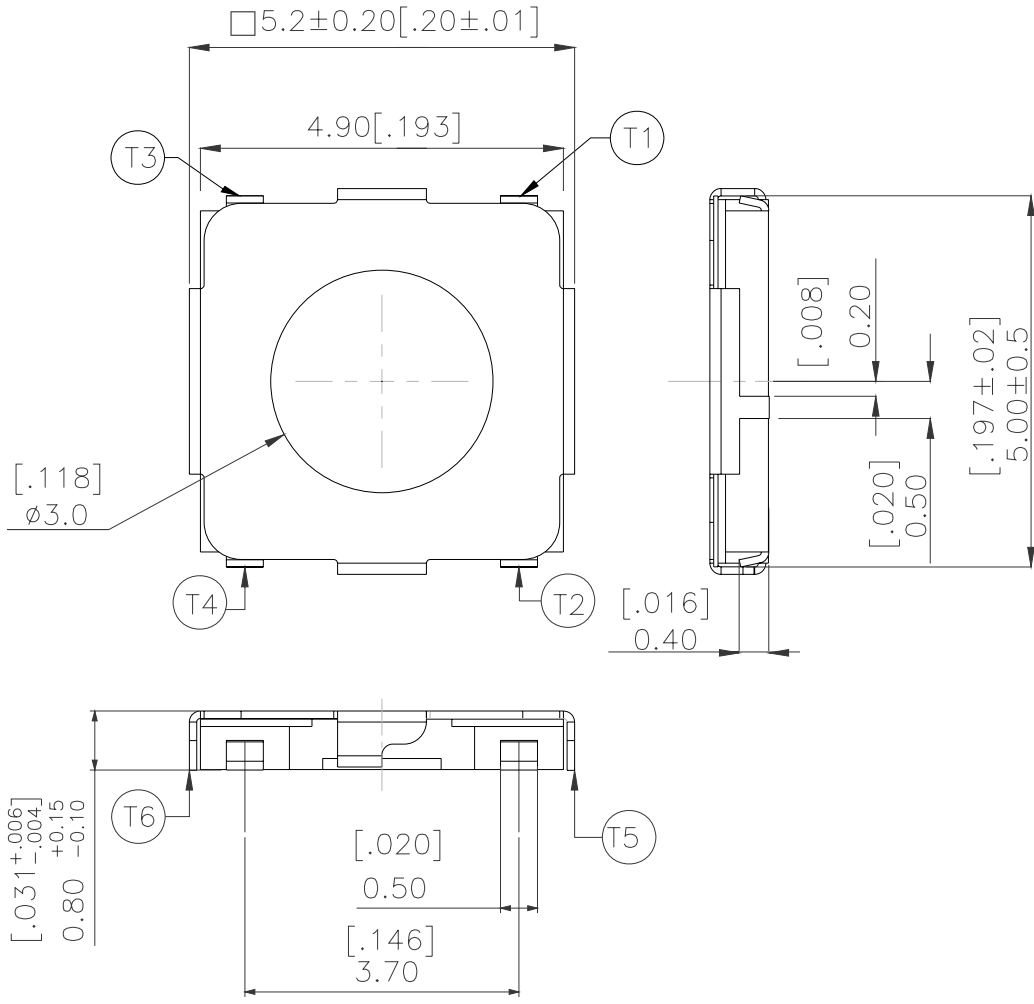


TJG-53*



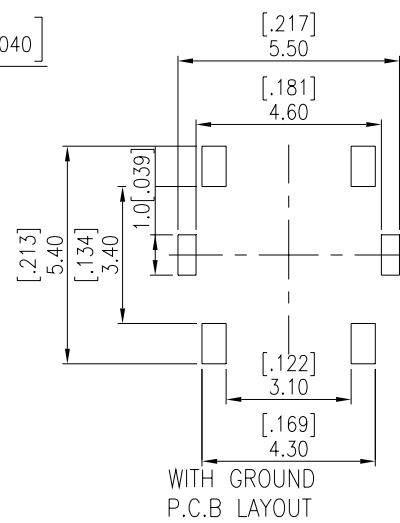
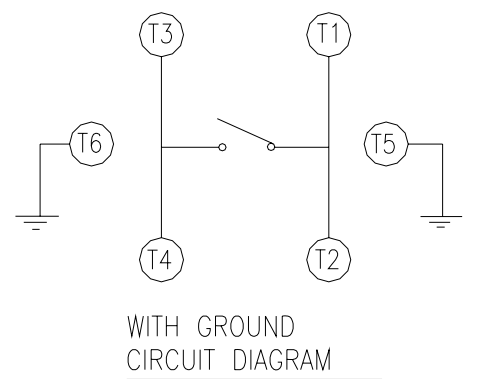
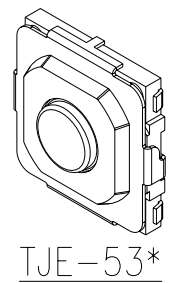
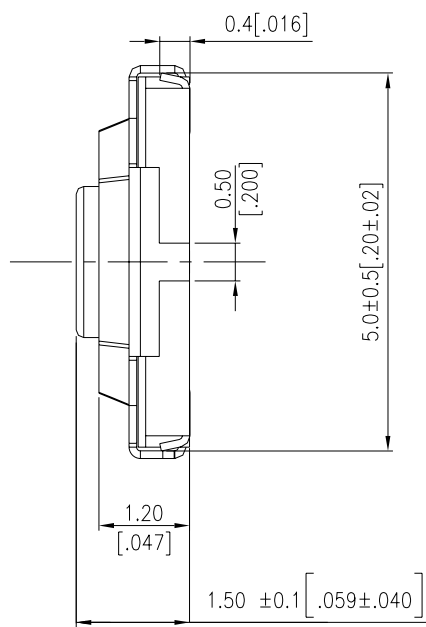
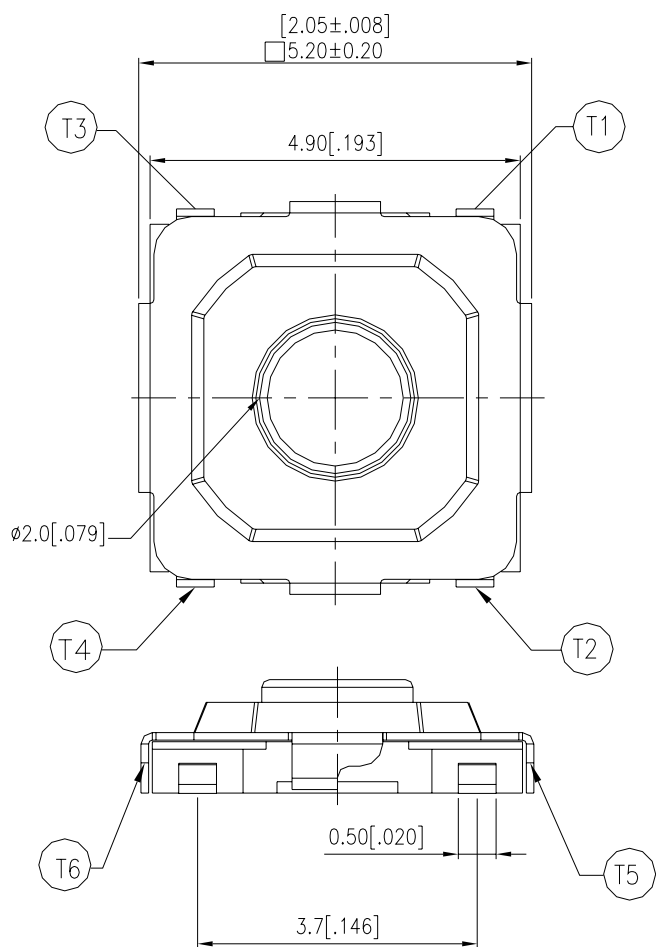
General Tolerance : $\pm 0.2\text{mm}$

TJG-52



General Tolerance : $\pm 0.2\text{mm}$

TJE-53



PLASTIC STEM HOW TO ORDER

T - 5 - Q -

Package:
T/R=Tape & Reel

Halogen Free

=No Stem
I=Stem Materials SPCC(for total H:1.5mm)

Operating Force:
2=100g
3=160g
4=260g

Total H:
3=1.5mm
2=0.8mm

5x5mm

=Cover Nickel Silver
S =Cover Stainless steel

Prod. Series:
G=With Ground Terminals
E=Ground pin in Central

TERMINATION TYPE:
M = Gull Wing
J = J Bend

SPECIFICATION

△MECHANICAL

Operation Force:

100 ± 50gf TMG-52, TJG-52, TJE-52

160 ± 50gf TMG-53, TJG-53, TJE-53

260 ± 50gf TMG-54, TJG-54, TJE-53

Stop Strength: Max. 3kgf vertical static load continuously
for 15 seconds

Stroke: 0.25 + 0.1mm
- 0.2mm

Operation Temperature: -25°C to + 70°C

Storage Temperature: -30°C to +80°C

△ELECTRICAL

Electrical Life:

1,000,000 cycles min. for TMG-52, TJG-52, TJE-52

1,000,000 cycles min. for TMG-53, TJG-53, TJE-53

200,000 cycles min. for TMG-54, TJG-54, TJE-54

Rating: 50mA , 12VDC

Contact Resistance: 100mΩ max.

Insulation Resistance: 100MΩ min. at 500VDC

Dielectric Strength: 250VAC / 1 minute

Contact Arrangement: 1 pole 1 throw

MATERIALS

△COVER:

= Nickel Silver

S= Stainless steel

△CONTACT DISC: Stainless steel with silver cladding.

△TERMINAL: Brass with silver plated.

△BASE: LCP High-temp Thermoplastic
Color: Black

△Plastic stem : LCP High-temp Thermoplastic for
TMG-53 、 TJG-53 、 TJE-53 、 TME-53
Color : Black 、 White

△Stem : SPCC

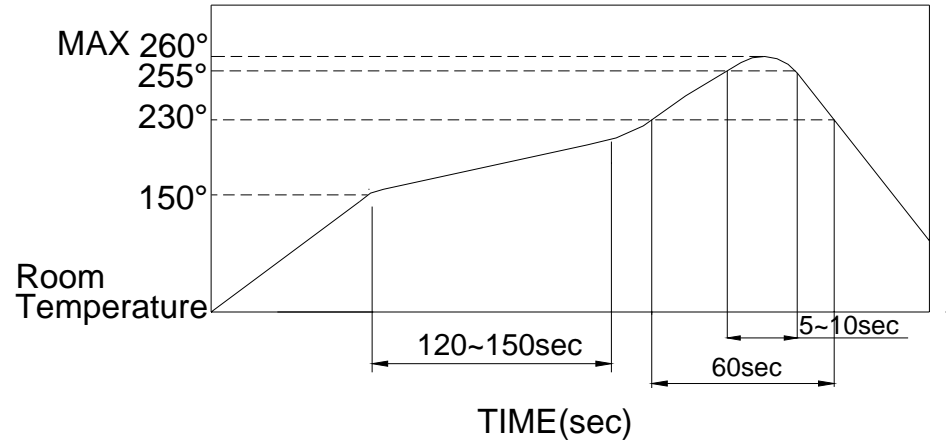
△TAPE: Teflon

SOLDERING PROCESS

△ **HAND SOLDERING:** Use a soldering iron of 30 watts, controlled at 350°C approximately Max 5 seconds while applying solder.

△ **SOLDERING:** Vapor phase & reflow soldering can be applied.

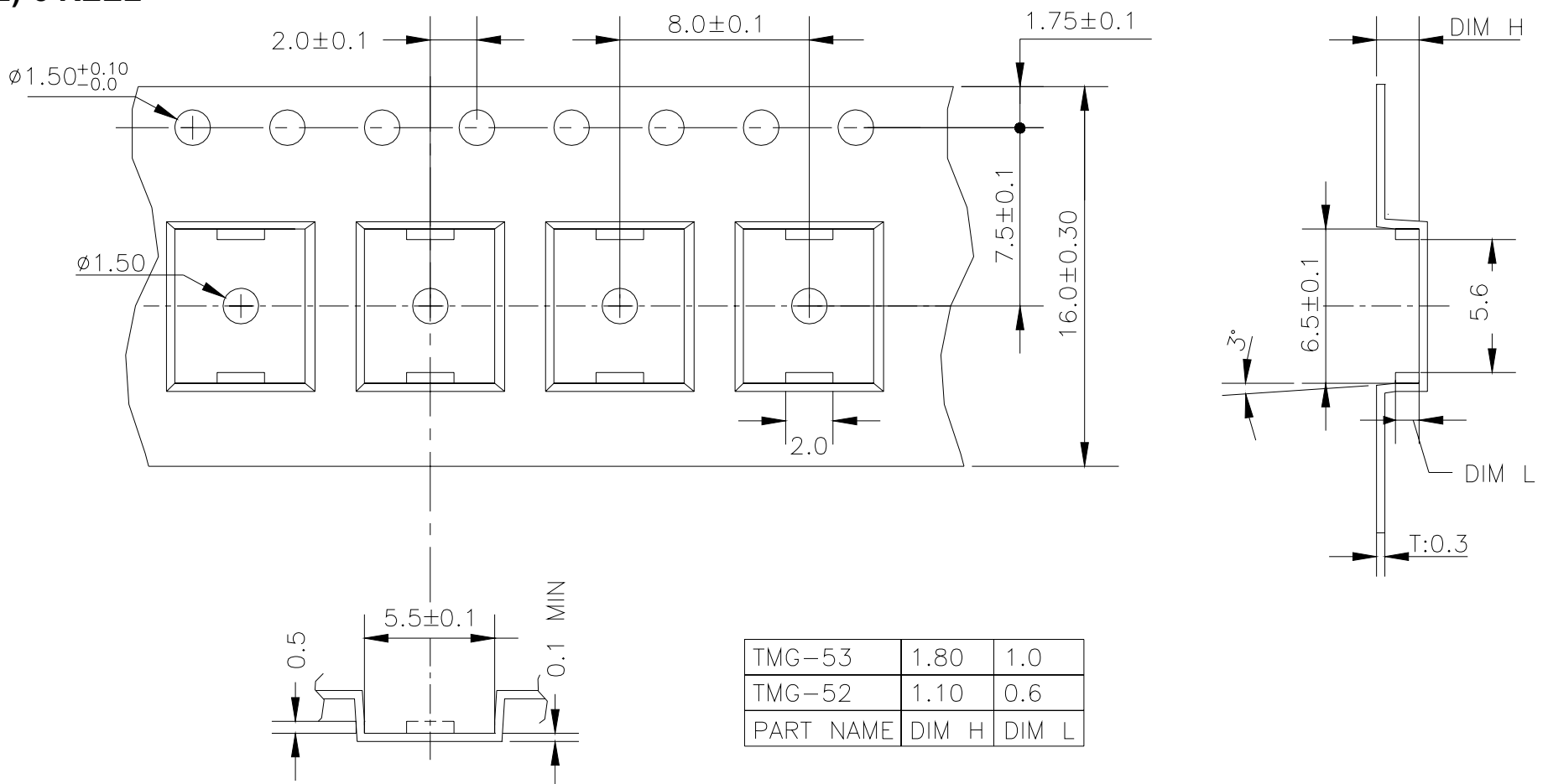
△ **Temperature Profile:**



PACKING

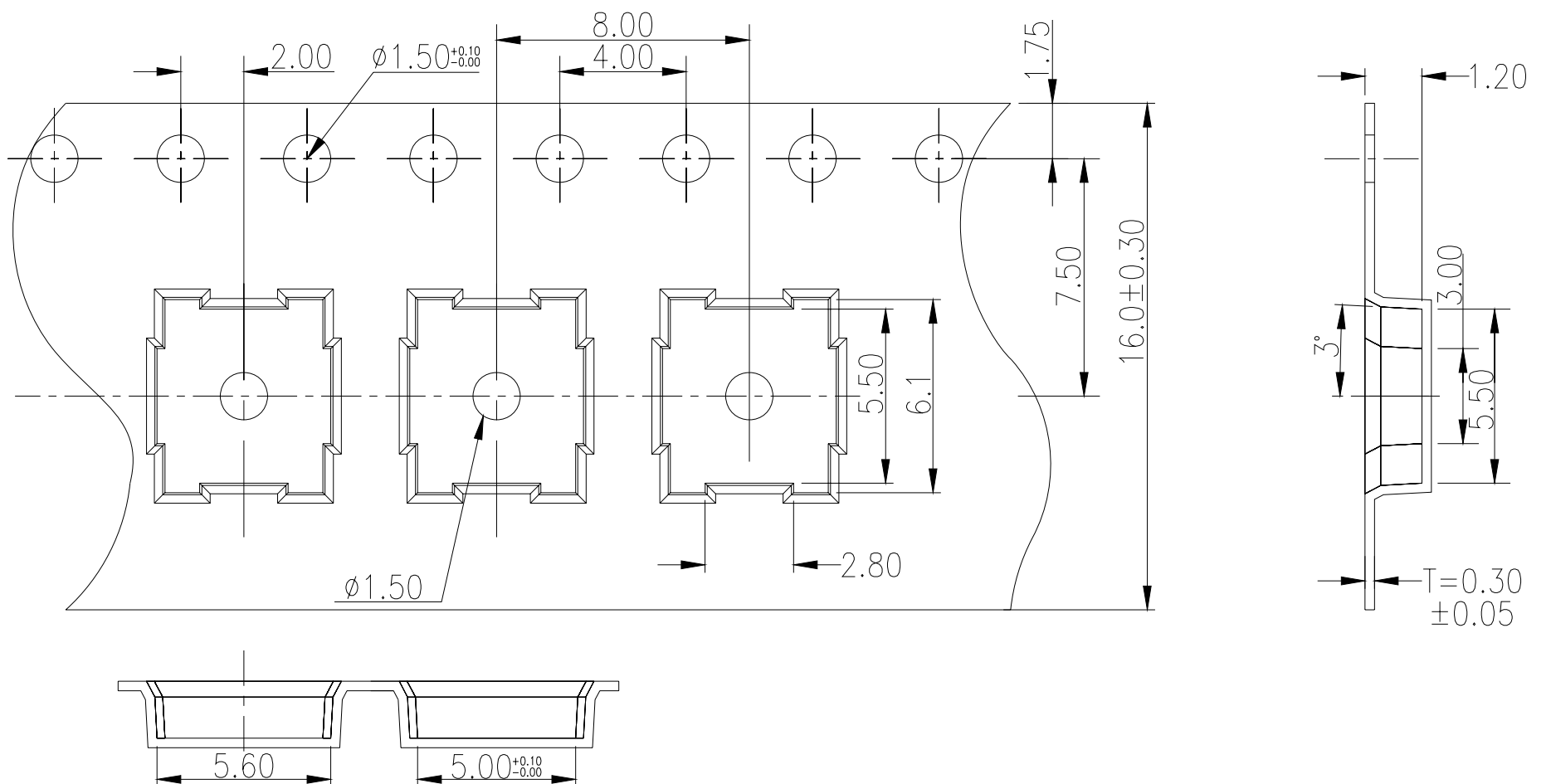
Part Number	Number Per Reel
TMG、TME-5	4000
TJG、TJE-5	4000

TMG(E)-5 REEL



General Tolerance : ± 0.1 mm

TJG(E)-5 REEL



General Tolerance : ± 0.1 mm

PRECAUTIONS in HANDLING

Care should be exercised so that flux from the upper part of the printed circuit board does not adhere to the switch.

Except for washable type do not wash the switch body.

Press direction & illustrated drawing:

