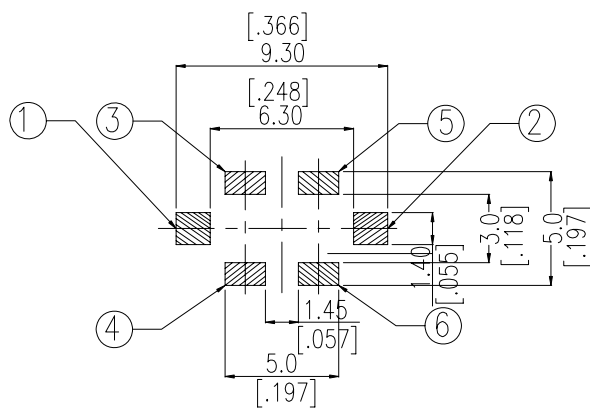
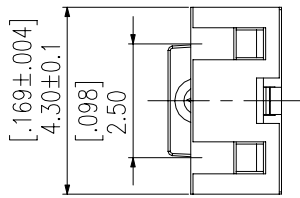
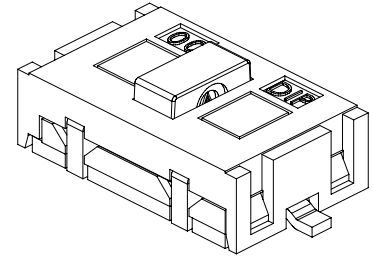
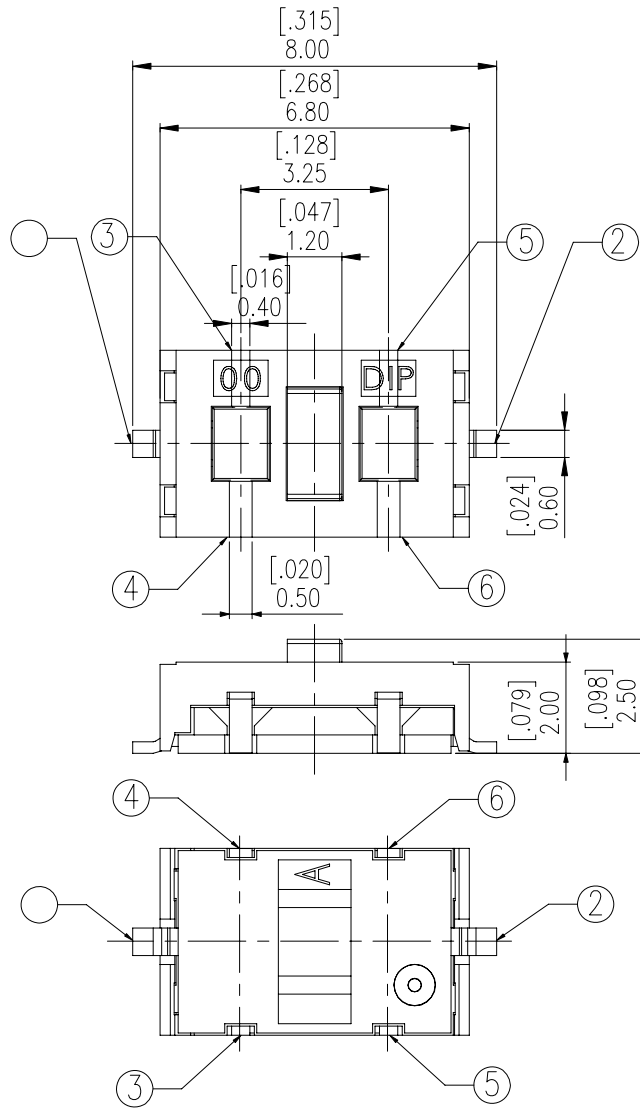


TML-3 SERIES



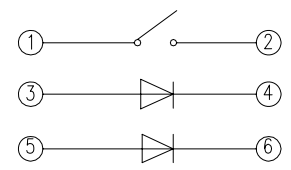
DIMENSIONS

TML-3



P.C.B. LAYOUT

NO.	LED COLOR
X	NON-LED
R	RED
O	SOFT ORANGE
G	GREEN
B	BLUE
A	AMBER
B5	BLUE(LED 5mA)



CIRCUIT DIAGRAM

General Tolerance : ±0.2mm

HOW TO ORDER

T M L - 3 W □ □ - □ - □

Package Style :
T/R = Tape & Reel

Soldering :
V = Lead Free Solderable

Right LED Color
X = No LED
R = Red
G = Greed
O = Soft Orange
B = Blue
A = Amber
B5=Blue(LED 5mA)

Left LED Color
X = No LED
R = Red
G = Green
O = Soft Orange
B = Blue
A = Amber
B5=Blue(LED 5mA)

Operating Force :
W = White, 160gf

Prod. No.
4.1X6.8mm

Tactile Switch

SPECIFICATION

△MECHANICAL

Operation Force: 160±50gf Brown (N)
 Stroke : 0.25+0.2/-0.1mm
 Operation Temperature: -20°C to +70°C
 Storage Temperature: -30°C to +80°C

△ELECTRICAL

Electrical Life: 50,000 cycles for 160gf
 Rating:50mA , 12VDC
 Contact Resistance: 100mΩ max.
 Insulation Resistance: 100MΩ min. 500V DC
 Dielectric Strength: 250VAC / 1 minute
 Contact Arrangement 1 pole 1 throw
 LED : See Specification.

MATERIAL

△Cover : UL 94V-0 Nylon High-temp Thermoplastic.
 Color : White
 △STEM : UL 94V-0 Nylon High-temp Thermoplastic.
 Color : Black
 △CONTACT : Stainless with silver cladding.
 △BASE : UL 94V-0 Nylon High-temp Thermoplastic.
 Color : White(160gf)
 △TERMINAL : Brass, Silver cladding
 △ADHESIONS TAPE : Kapton

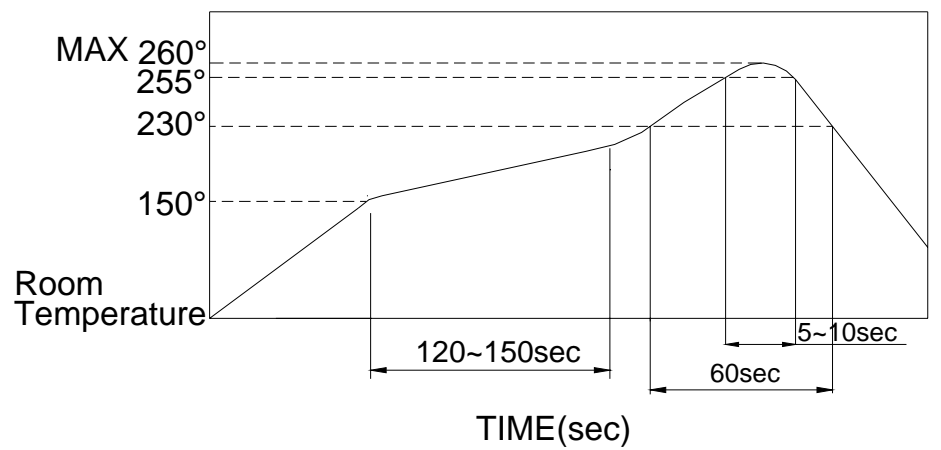
SOLDERING PROCESS

△HAND SOLDERING: Use a soldering iron of 30 watts, controlled at 350°C approximately Max 5 seconds while applying.

△REFLOW SOLDERING: When applying reflow soldering, the peak temperature or the reflow oven should be set to 260°C max.

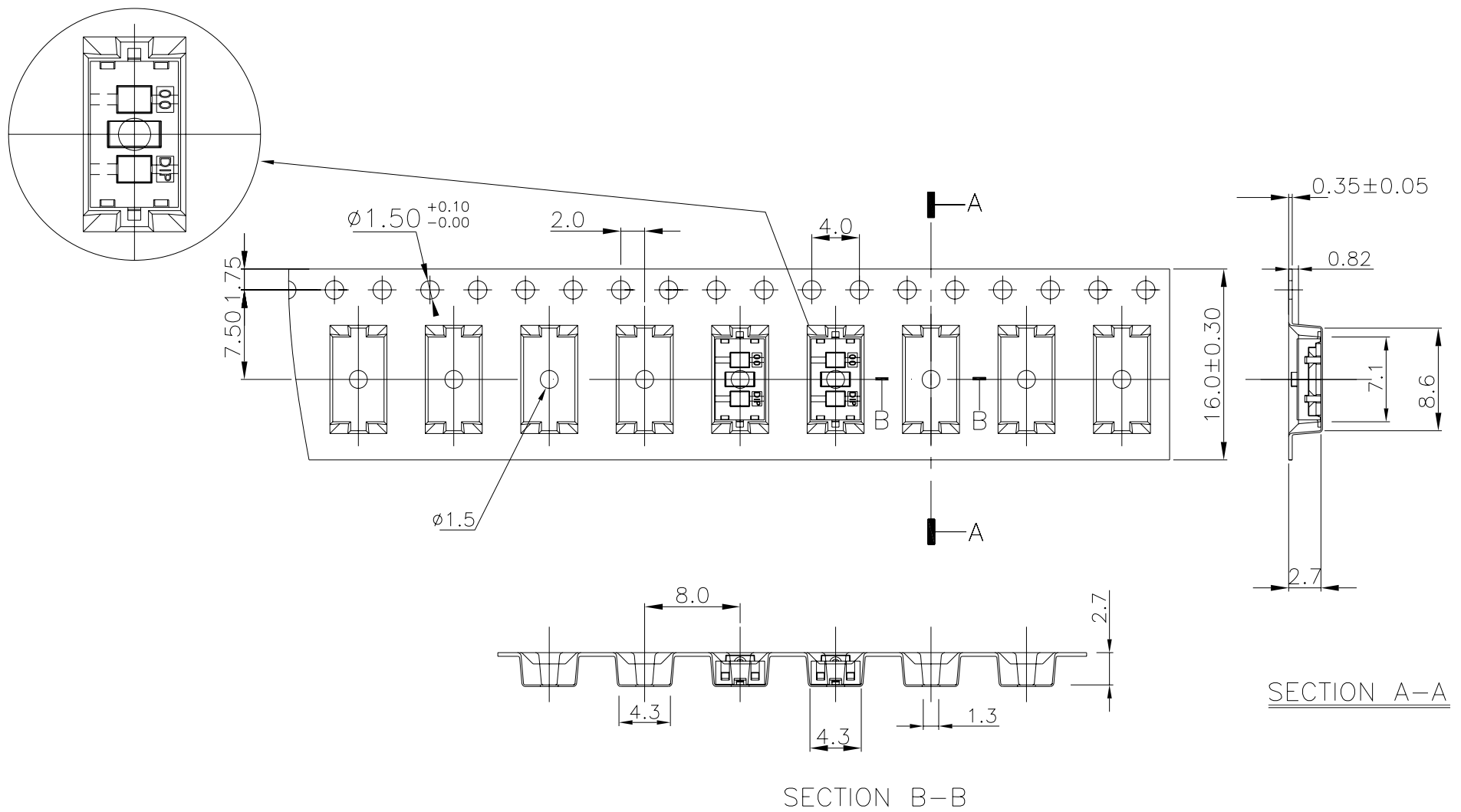
△CONDITION FOR SOLDERING : Reflow & non-washable type

△Temperature Profile :



PACKING

Part Number	Number Per Reel	Number Per Bag
TML-3	3000	-



General Tolerance : ±0.1mm

PRECAUTION in HANDLING

△After reflow, do not touch LED before cooling, or it could influence LED function.
 △It is a normal material characteristic when yellowing on plastic surface after reflow.
 △Care should be exercised so that flux from the upper part of the printed circuit board does not adhere to the switch