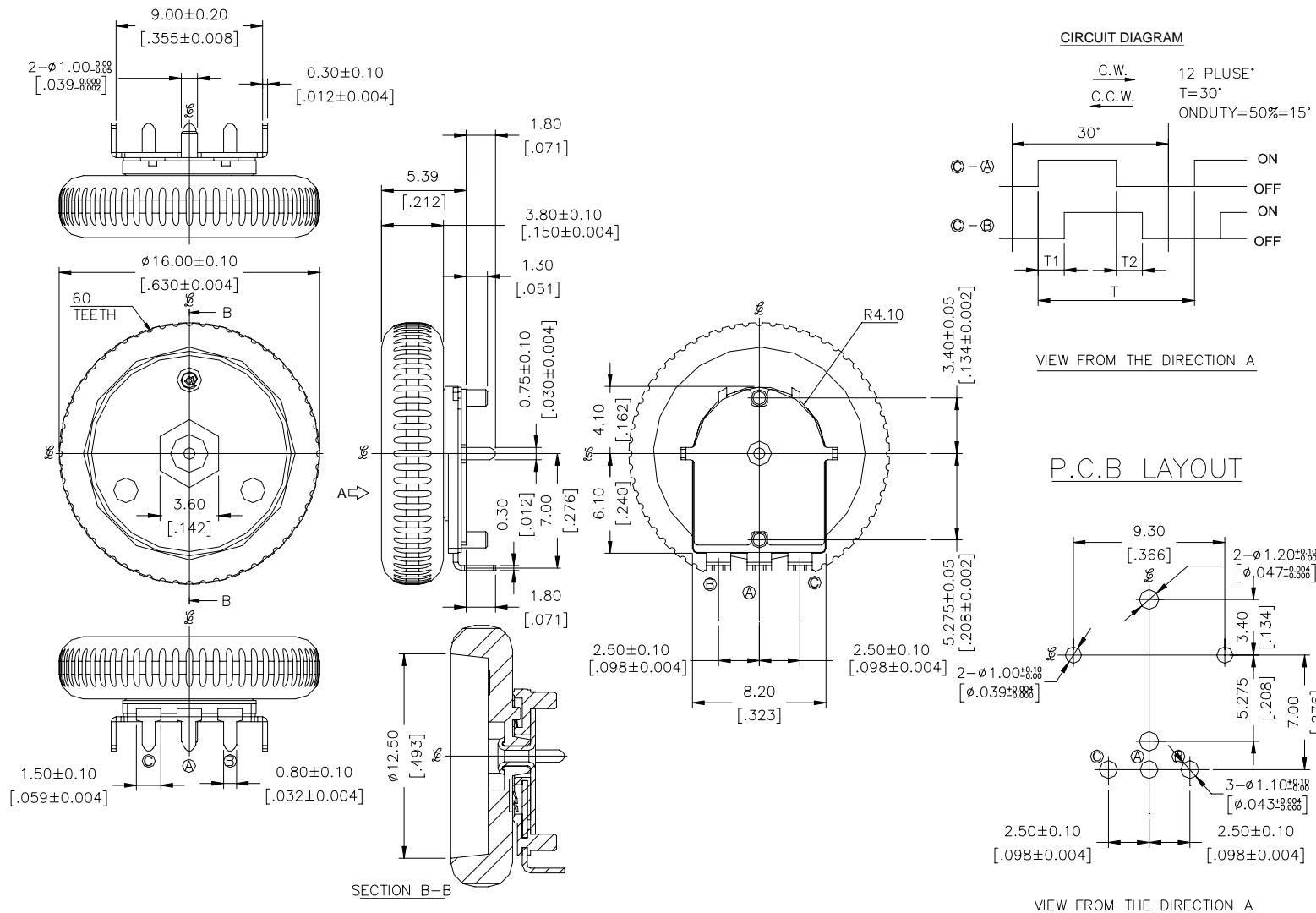


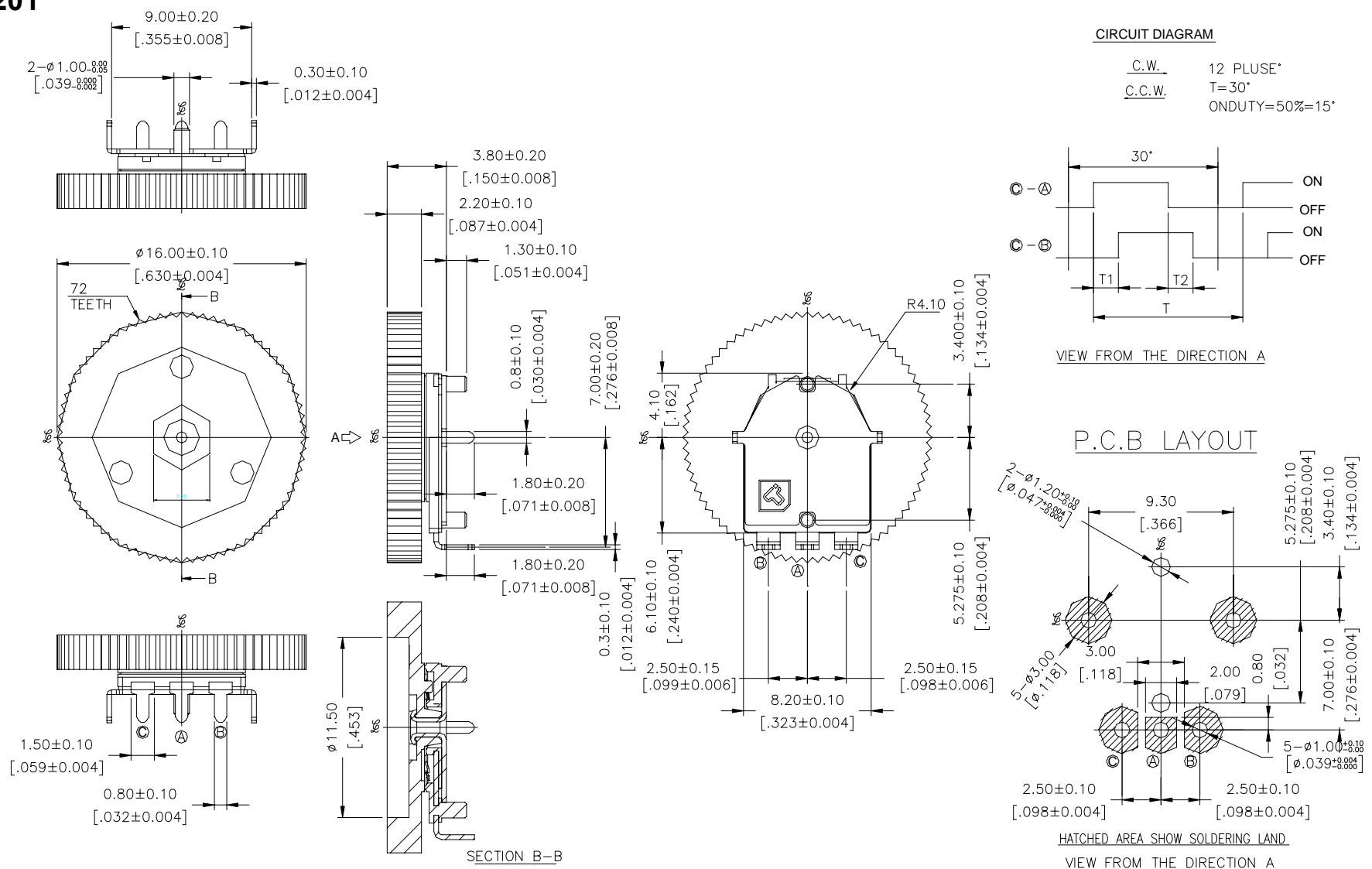
DIMENSION

ZREA-100



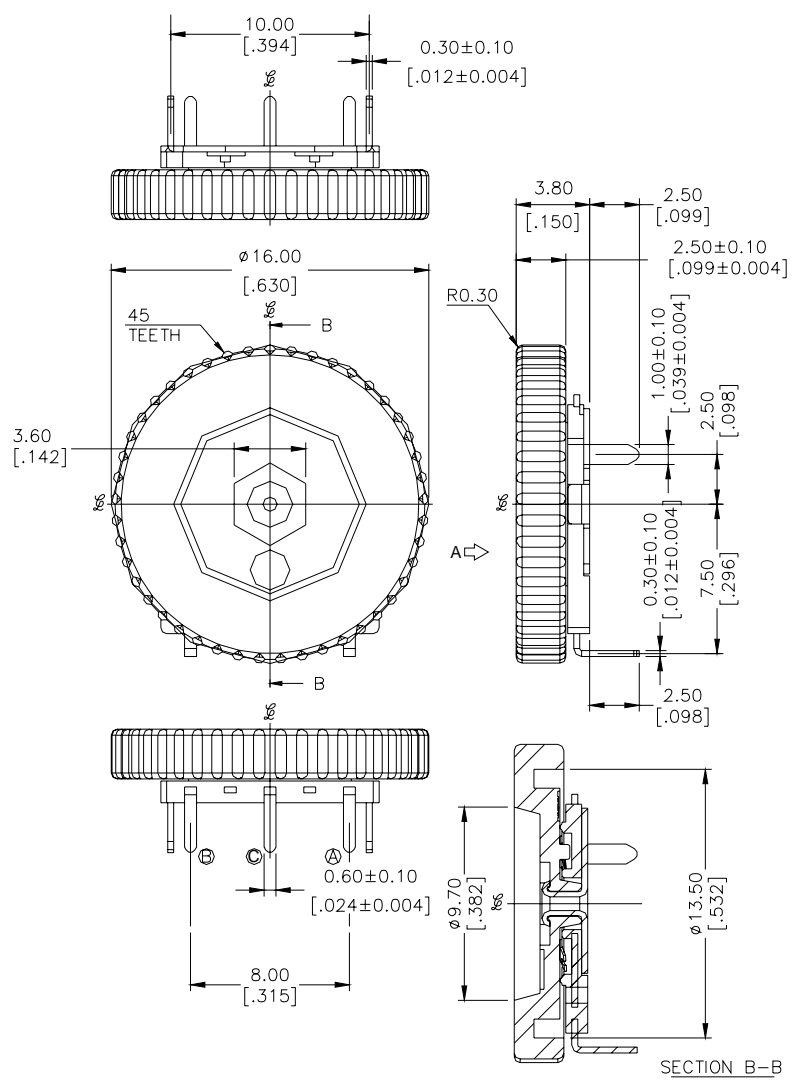
General Tolerance : ±0.2mm

ZREA-201



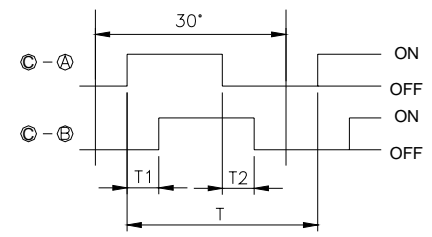
General Tolerance : ±0.2mm

ZREB-100



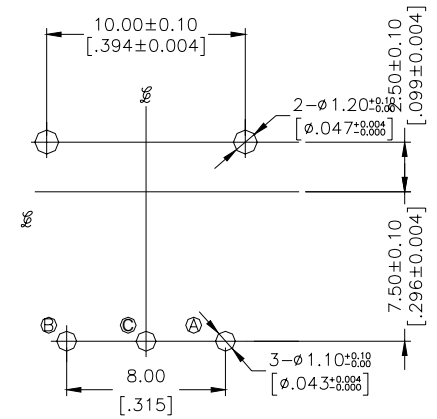
CIRCUIT DIAGRAM

C.W. 12 PLUSE*
C.C.W. T=30*
ONDUTY=50%=15*



VIEW FROM THE DIRECTION A

P.C.B LAYOUT

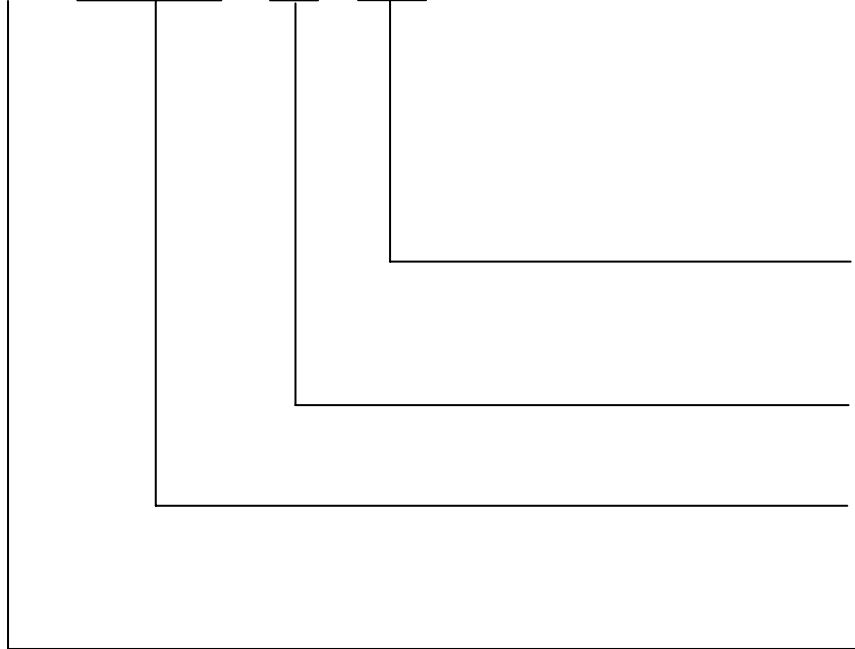


VIEW FROM THE DIRECTION A

General Tolerance : ±0.2mm

HOW TO ORDER

ZRE □ - □ □ □ - □ - T/R



Package Style :
Tape & Reel

V = Lead Free Solderable

100/201 Knob Type
(Refer to the attached drawing)

Terminals:
A = Pitch 2.5mm
B = Pitch 4.0mm

SPECIFICATION

△MECHANICAL

Operation Force: 3~60gf-cm

Total Rotary Angle: 360° (12 Pulse)

Operation Temp: -30°C to +80°C

Storage Temp: -40°C to +85°C

△ELECTRICAL

Electrical Life: 20,000 steps

Rating: 1mA, 5VDC

Insulation Resistance: 10MΩ min. (50VDC)

Dielectric Strength: 50VAC/ 1minute

MATERIAL

△BRACKET: SPCE

△BASE: UL 94V-0 High-Temp thermoplastic

Color: Black

△ROTOR: UL 94V-0 High-Temp thermoplastic

Color: Black

△CONTACT: Brass with silver plated

△TERMINAL: SPCC

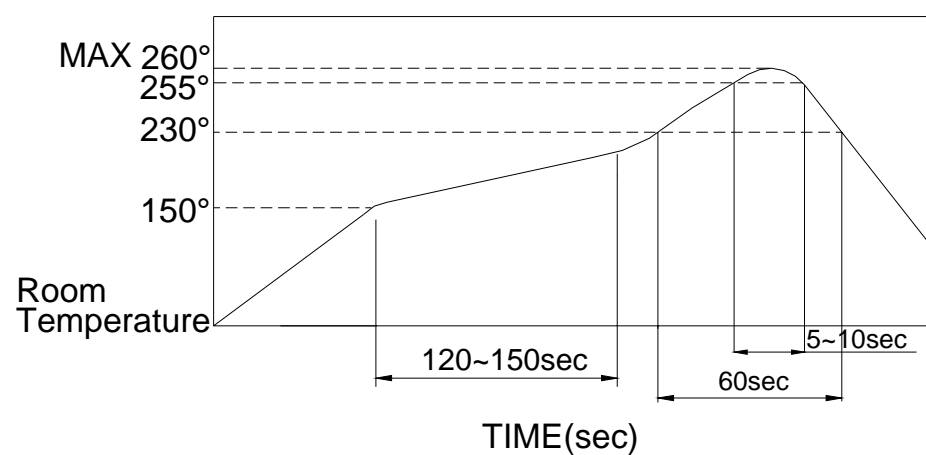
SOLDERING PROCESS

△ HAND SOLDERING : Use a soldering iron of 30 watts, controlled at 350°C approximately 5 seconds while applying.

△ WAVE SOLDERING : Recommended solder temperature at 500°F(260°C)max. 5 seconds for through Hole type.

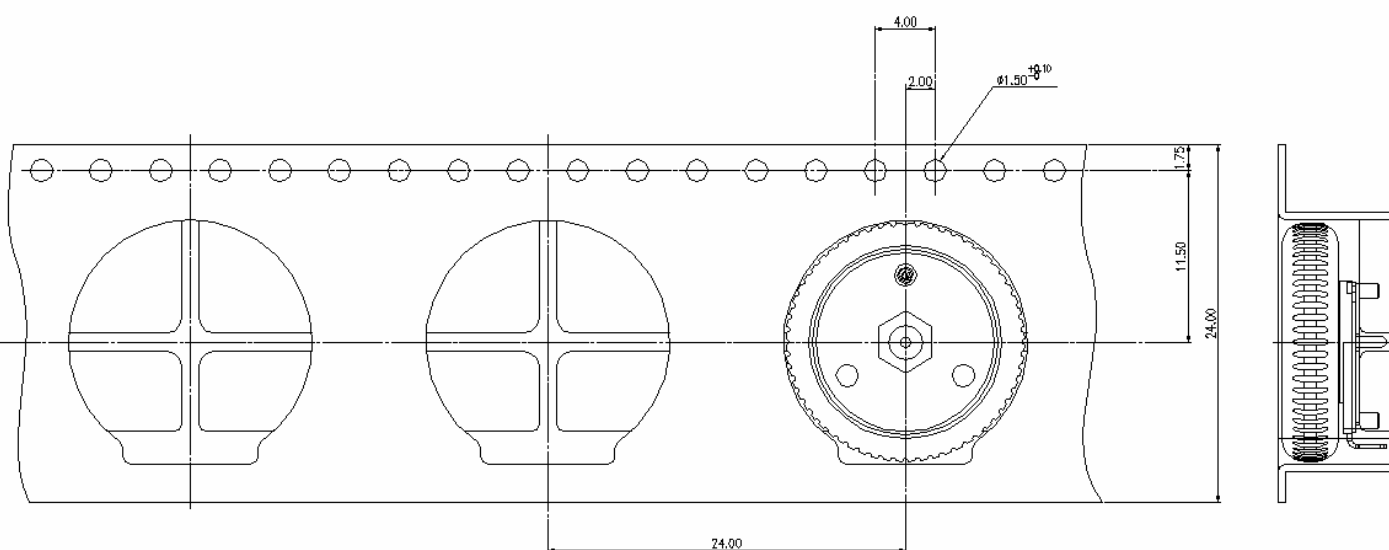
△ REFLOW SOLDERING : When applying reflow soldering, the peak temperature or the reflow oven should be set to 260°C max.

△ Temperature Profile :



PACKING

ZREA CARRIER



Part Number	Number Per Reel	Number Per Tube
ZREA	400	
ZREB	450	