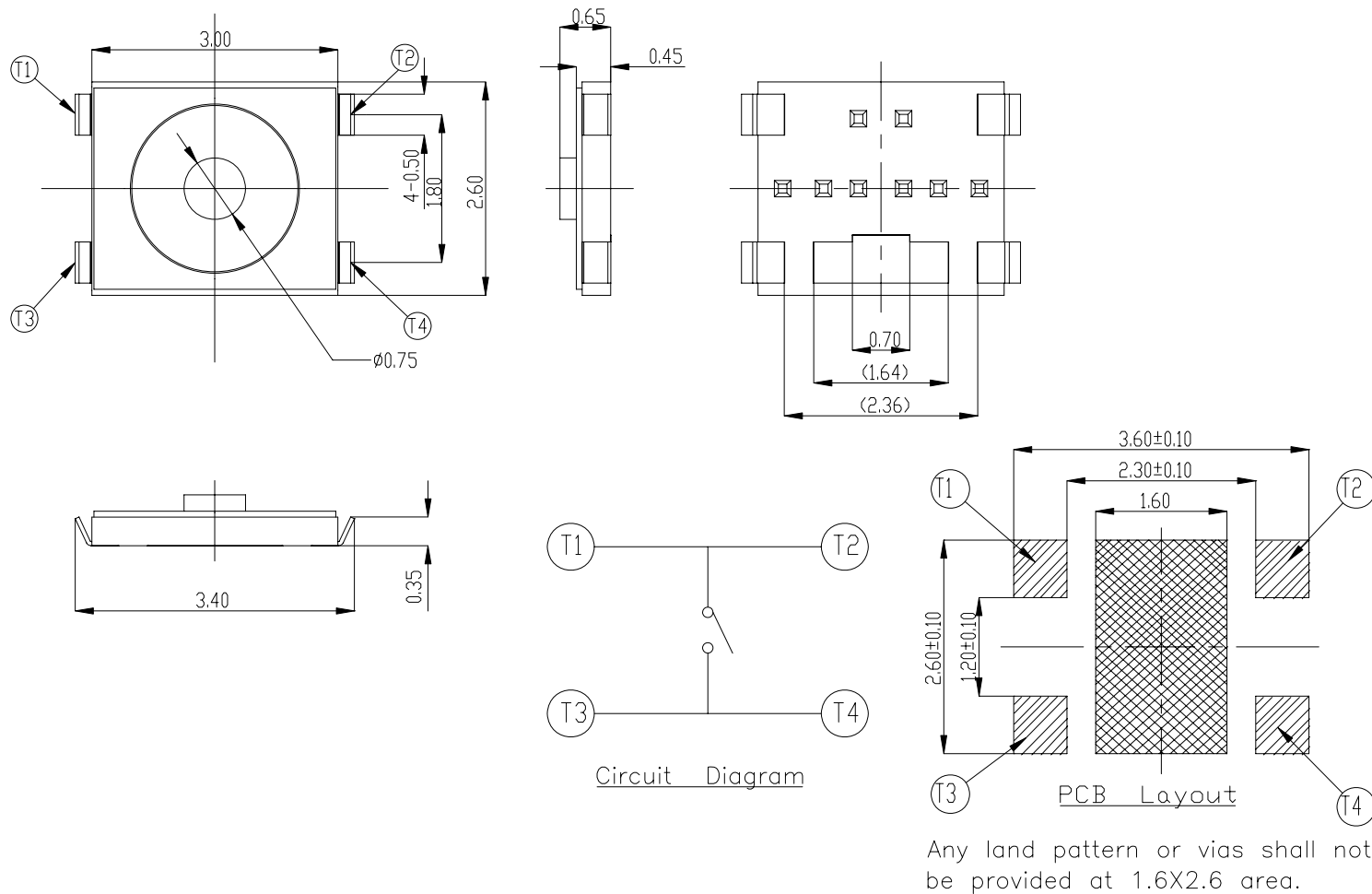


T3A SERIES



DIMENSION

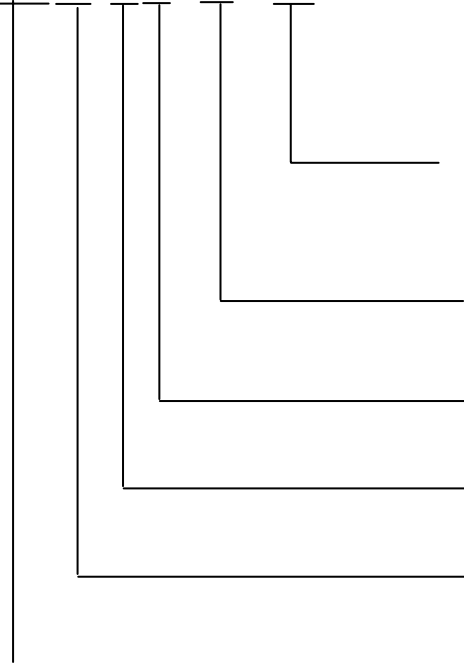
T3AL



General Tolerance : $\pm 0.2\text{mm}$

HOW TO ORDER

T 3 A L - 2 3 - Q - □



- Package :
T/R = Tape & Reel
- Halogen Free
- Operating Force : 160 gf
- Stem : 0.2 mm
- J Terminal SMT Type
- Tact Switch 3.0x2.6

SPECIFICATION

△MECHANICAL

- Operation Force : $160\pm 50\text{gf}$
- Stroke : $0.15\pm 0.10\text{mm}$
- Operation Temperature Range : -40°C to $+80^{\circ}\text{C}$
- Storage Temperature Range : -40°C to $+85^{\circ}\text{C}$

△ELECTRICAL

- Electrical Life : 100,000 cycles
- 50 mA, 12 VDC
- Contact Resistance : 100 m Ω max.
- Insulation Resistance : 50M Ω min. at 100 VDC
- Dielectric Strength: 250 VAC/1 minute
- Contact Arrangement : 1 pole 1throw

MATERIAL

- △BASE : UL 94V-0 LCP High-Temp Thermoplastic.
Color : Black
- △CONTACT : Stainless steel with silver cladding.
- △TERMINAL : Phosphor bronze with silver cladding.
- △STEM : SILICONE RUBBER
Color : Black
- △TAPE : Kapton.

SOLDERING PROCESS

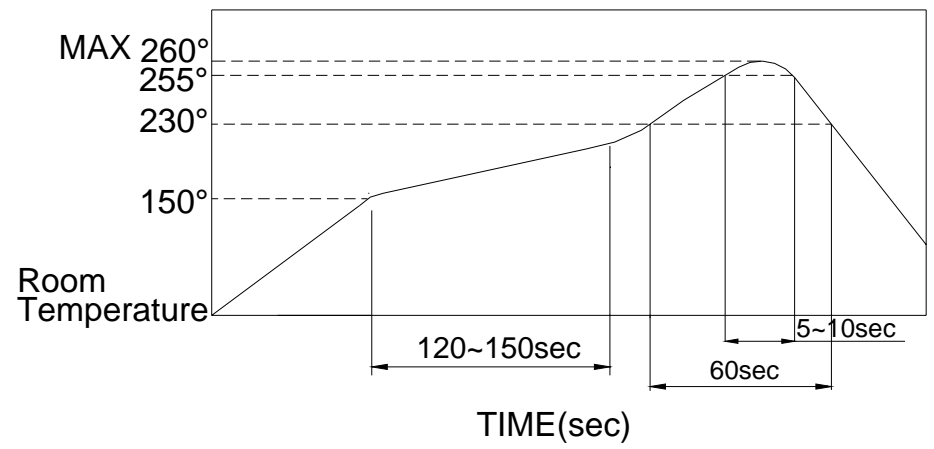
△CLEANING:

1. Only Tape sealed types apply to wash process.
2. Do not remove the tape before wash process.
3. After soldering process, do not continue the wash process immediately. Please wait for at least 3 minutes.
4. Apply alcoholic solvents as cleaning agent do not use other solvents or water.
5. Ultrasonic cleaning is not recommended.
6. The cleaning process per stage is max. 1 minute and the whole cleaning time are not to exceed 3 minutes.
7. Do not impose any external force on switch while washing.

△ Any flux enters the switch may fail the conductivity.

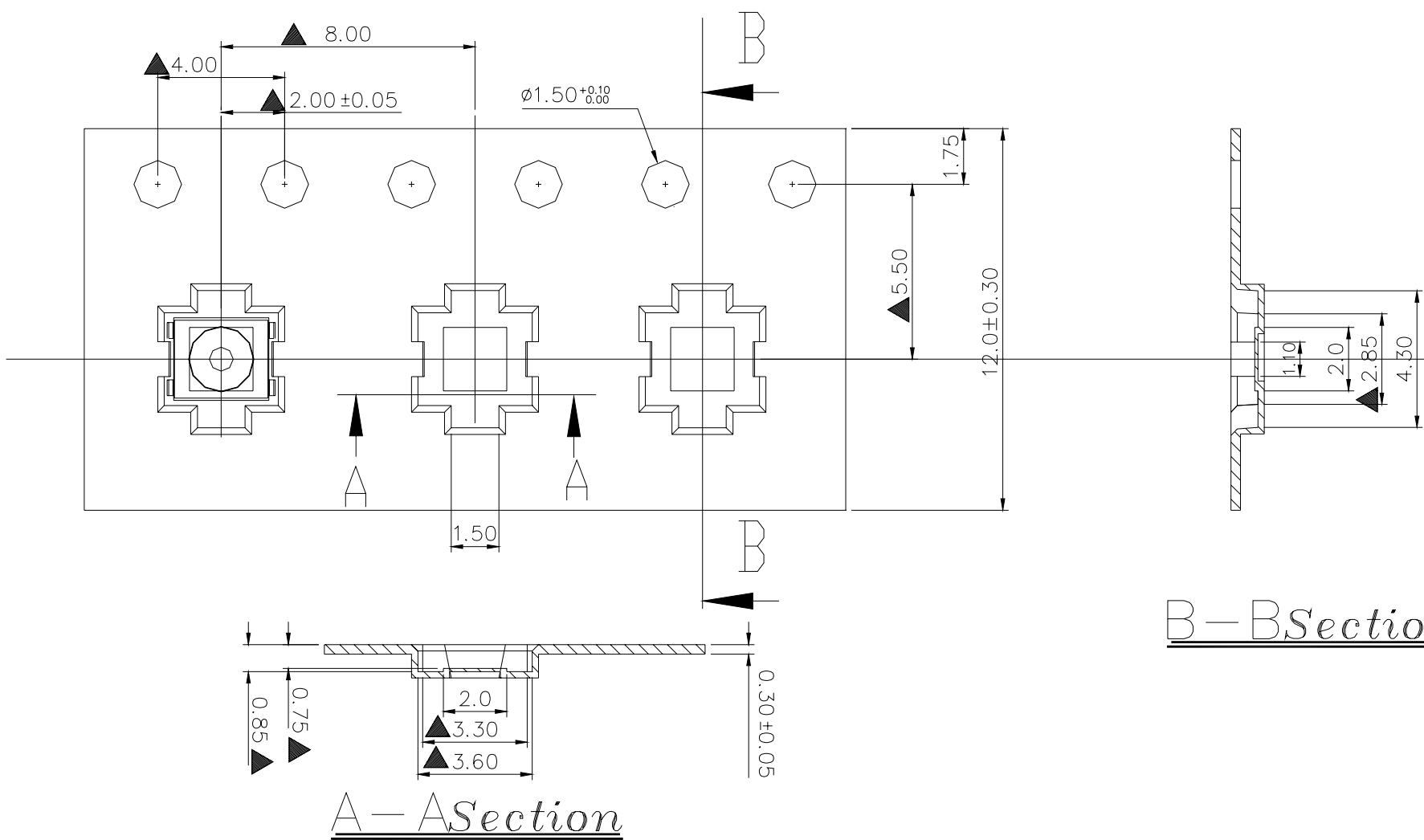
△ Reflow Temperature Profile: (reference)

△ Temperature Profile :



PACKING

Part Number	Number Per Tube	Number Per Reel
T3AL	-	**To be confirmed



General Tolerance : ±0.1mm